

ELEVATION KEY

**Safety, Health and Environmental Information**

In addition to the hazards/risks normally associated with the types of work detailed on this drawing and noted in the Designer Risk Assessments and health and safety plan, note the following:

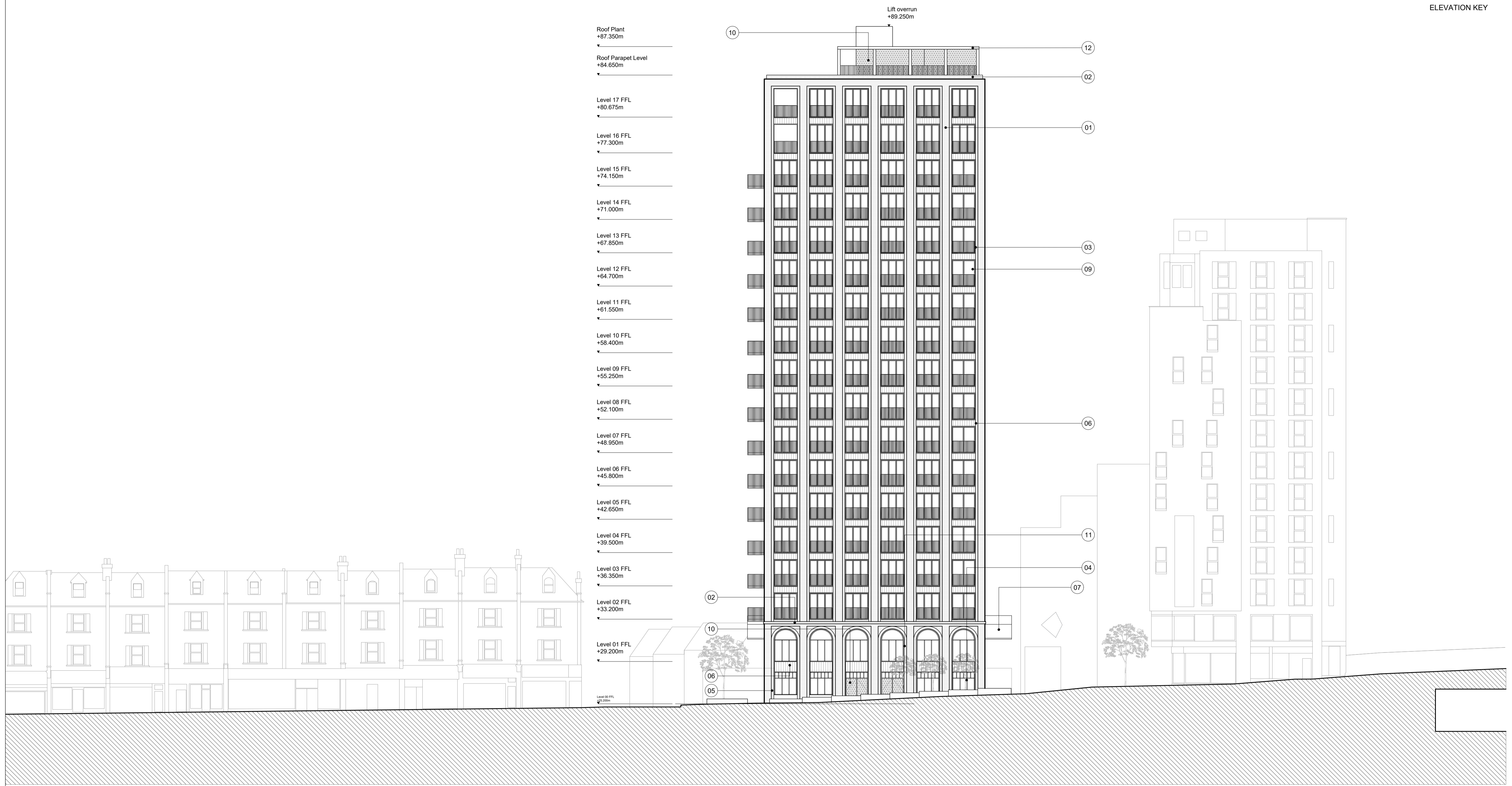
- It is assured that all works on this will be carried out by a competent Contractor working where appropriate, to be an approved method statement.
- Where applicable, significant residual risks are highlighted in the body of the drawing.

**General Note**

- All levels and dimensions are approximate, detailed site surveys must be carried out by Contractor before commencement on building works. All levels and dimensions to be confirmed on site.
- All existing drawing information is indicative and subject to the detailed site survey.
- For information only.
- Do not scale from this drawing.
- This drawing is copyrighted.

**Key**

- 01 Vertical brickwork pier
- 02 Soldier course and inset brickwork
- 03 Metal balustrade
- 04 Aluminium framed glazing to entrance
- 05 Glazed brick to lower level
- 06 Ceramic glazed spandrel panel
- 07 Steel structure with metal clad roof to yard
- 08 Metal cladding to cycle store
- 09 Aluminium framed glazing to apartments
- 10 Decorative metal clad external doors and louvre panels
- 11 Aluminium framed linen glass to stair cores
- 12 Steel Pergola
- 13 Glazed Hit & Miss Brick
- 14 Hit & Miss Brick
- 15 Folding metal shutters



- Roof Plant +87.350m
- Roof Parapet Level +84.650m
- Level 17 FFL +80.675m
- Level 16 FFL +77.300m
- Level 15 FFL +74.150m
- Level 14 FFL +71.000m
- Level 13 FFL +67.850m
- Level 12 FFL +64.700m
- Level 11 FFL +61.550m
- Level 10 FFL +58.400m
- Level 09 FFL +55.250m
- Level 08 FFL +52.100m
- Level 07 FFL +48.950m
- Level 06 FFL +45.800m
- Level 05 FFL +42.650m
- Level 04 FFL +39.500m
- Level 03 FFL +36.350m
- Level 02 FFL +33.200m
- Level 01 FFL +29.200m

02	09.05.25	MM	HC	HC
01	17.07.24	JC	NM	HC
00	26.02.21	CH	HC	HC
Issue	Date	By	Chkd	Appd

HAL Architects Ltd  
 The Building Society  
 55 Whitefield Street  
 London  
 W1T 4AH  
 Tel: +44(0)20 7850 2359  
 www.halarchitects.co.uk

Client  
**Providence Capital Securities**

Job Title  
**278-284 Hoe Street**

Drawing Title  
**Proposed East Elevation**

Scale at A1  
**1:200**

Discipline  
**Architectural**

Drawing Status  
**Planning**

Job No	Drawing No	Issue
128	HAL-DR-A-GAE-302	02

