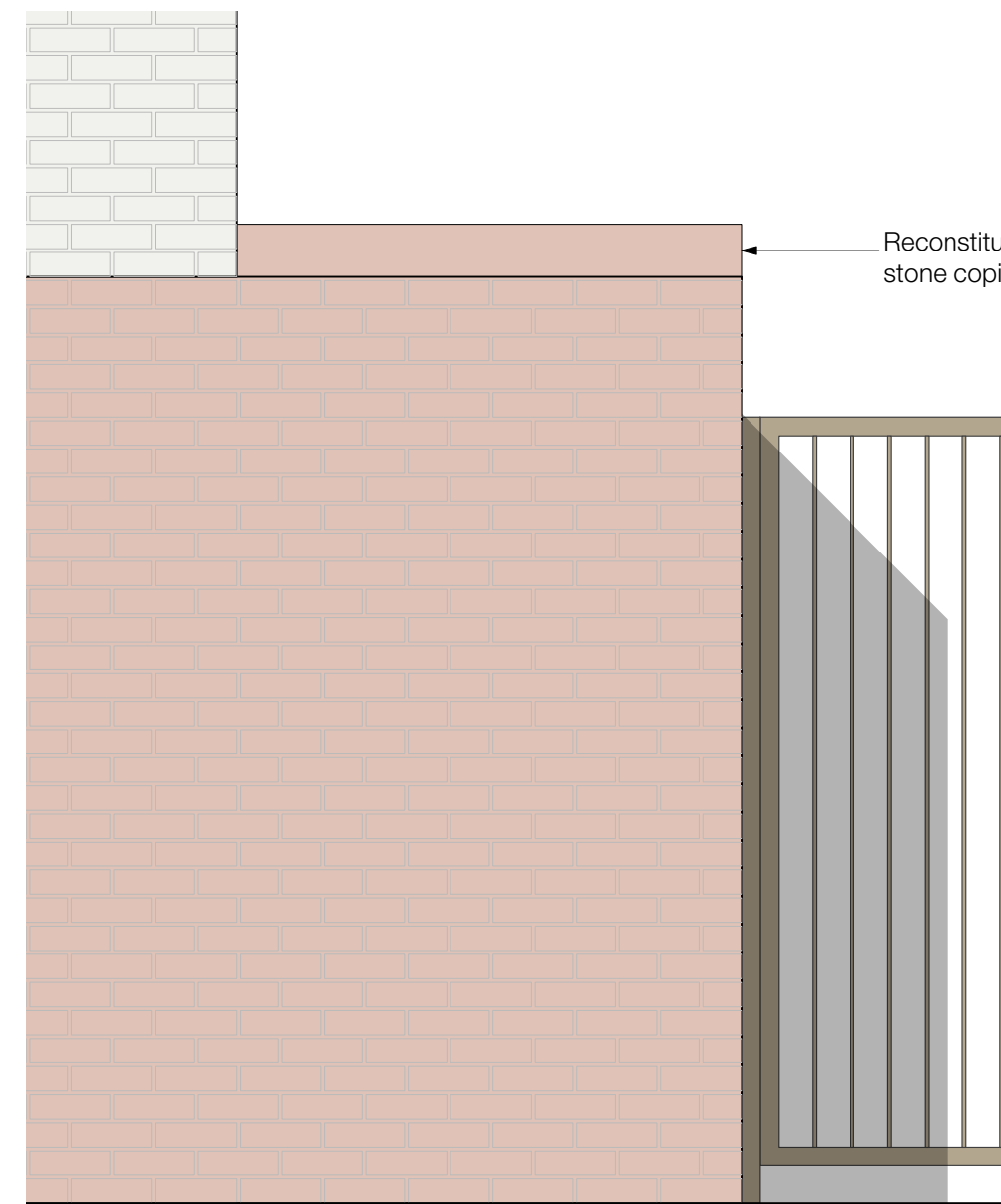


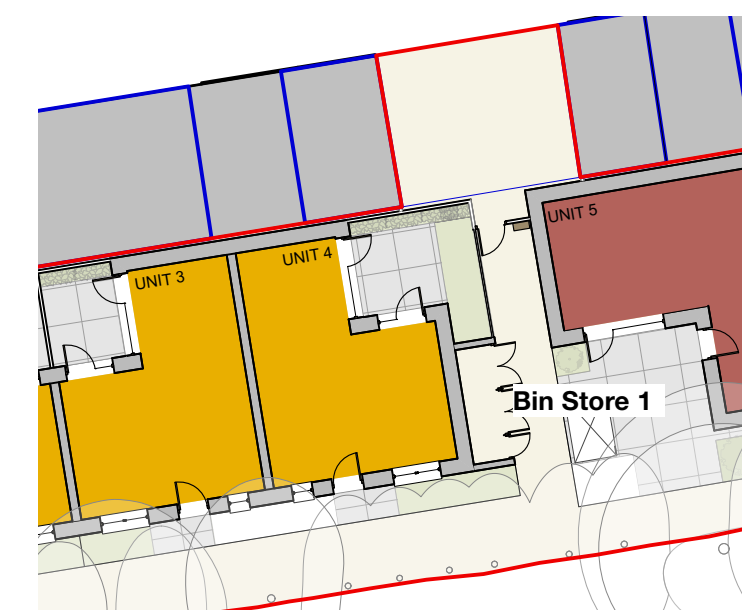
Proposed Elevation of Bin Store 1

Secure by design compliant access control system with fob access.

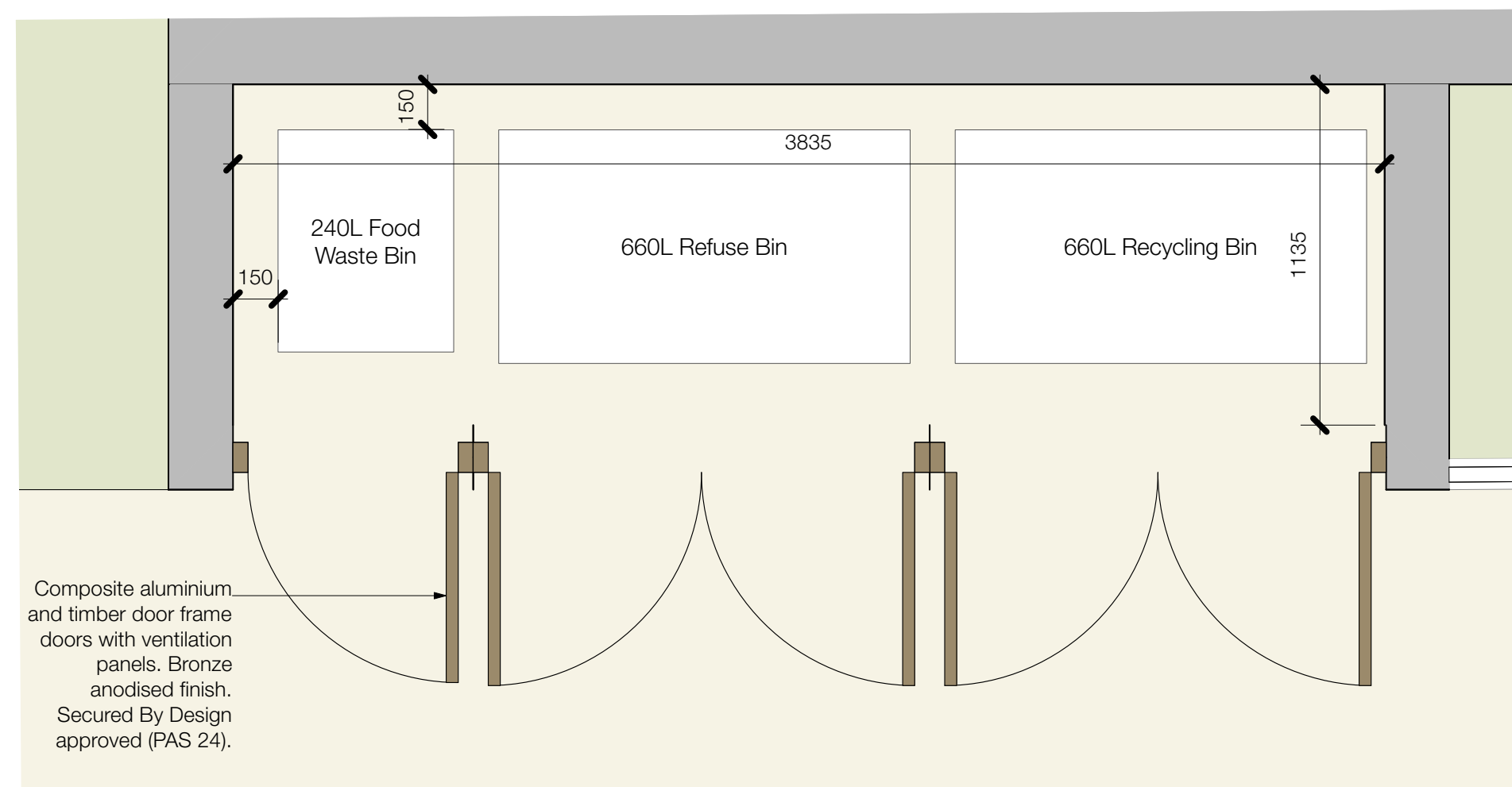
Composite aluminium and timber door frame doors with ventilation panels. Bronze anodised finish. Secured By Design approved (PAS 24).



Proposed Elevation of Bin Store 1

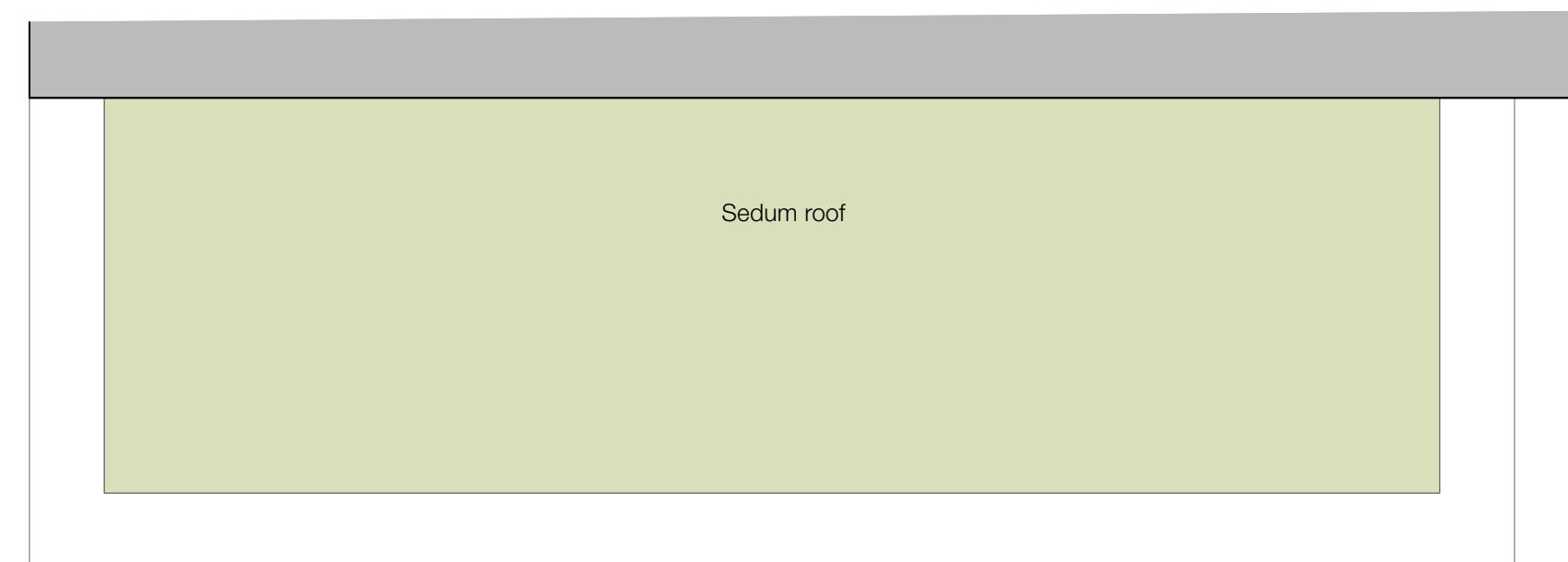


Key Plan
Scale 1:250



Proposed Plan of Bin Store 1

Composite aluminium and timber door frame doors with ventilation panels. Bronze anodised finish. Secured By Design approved (PAS 24).

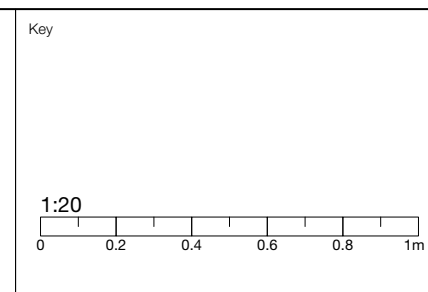


Proposed Roof Plan of Bin Store 1

General Notes
 © Copyright Stephen Davy Peter Smith Architects 2024
 These proposals are subject to the approval of all Statutory Building Control requirements and the requirements of all Statutory Authorities and Service Providers.
 The site boundaries and surroundings are based on the following:
 • OS Map
 The site boundaries are those described by the client.
 These drawings are to be read in conjunction with all other relevant documentation produced by Stephen Davy Peter Smith Architects and other consultants employed by the client.

Specific Notes

Legend



Rev	Drawn	Notes	Date	Client	
P1	CM	Issued for planning	29/01/25	Landview	
P0	CM	Issued for comment	28/11/24		
Rev	Drawn	Notes	Date	A - APPROVED	
X#	XX	##/##/##		B - APPROVED WITH COMMENTS	
Rev	Checked	Date	Approved	Date	C - DO NOT USE
REVISIONS				CLIENT APPROVAL	

stephen davy peter smith architects
 5A Underwood Street, London N1 7LY
 Tel: 020 7739 2020
 E-mail: sdps@stephendavy.com
 Website: www.davysmitharchitects.co.uk

Project
 Rear of Chingford Mount Road

Drawing Ref. 2323 - DS - XX - DR - A - P521	Job No. 2323
Purpose of Issue PLANNING	Scale 1:20 @ A3
Drawing Title Proposed Bin Store 01	
Project Ref - Drawing No - Status - Revision 2323 - P521 - S0 - P1	