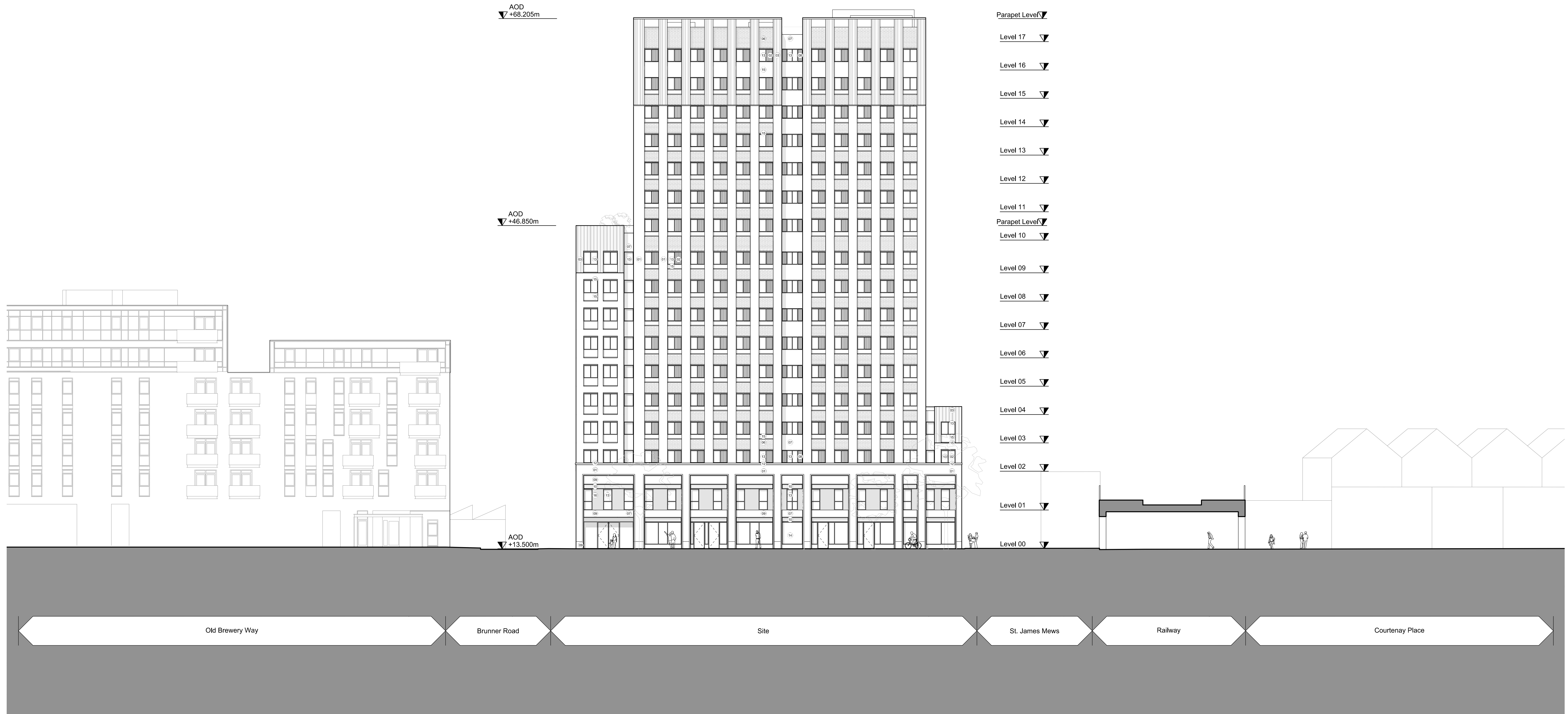
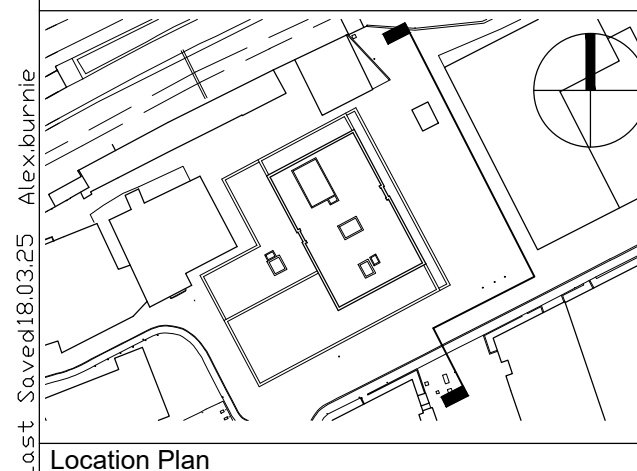


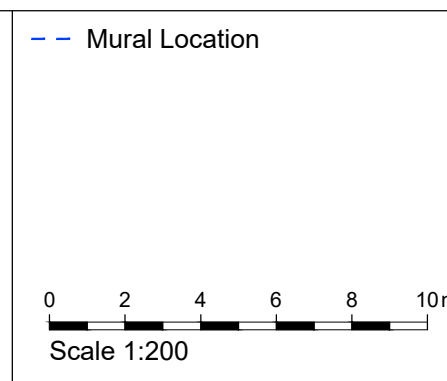
Location: S:\2020\34011 - BRUNNER ROAD\2 - DRAWINGS\BRUNN\20 EA PLANS SECT ELEV\201.dwg  
Last Saved: 18.03.25 Alex Burnie



**01 Proposed East Elevation**  
Scale - 1:200



P04	Planning Submission Amendment 03 BS9991 and Roof Plant	AGB	21.03.25	TNT
P03	Planning Submission Amendment 02	DKF	18.12.24	AGB
P02	Planning Submission Amendment	AZK	30.07.24	AGB
P01	Planning Submission	AZK	19.01.24	AGB
Rev.	Des.	By	Date	Ch.



- Materials Key**
- Brick Type 1 Facing Running Bond: Ibstock A2602A Birtley Olde English with Cemex Light Brown Dark Mortar (or similarly approved)
  - PPC Metal Fins: Off White, RAL TBC
  - Brick Type 1 Vertical Corbel: A2602A Birtley Olde English with Cemex Light Brown Dark Mortar (or similarly approved)
  - Brick Type 2 Vertical Corbel: Ibstock A5143A New Diana with Cemex Light Brown Dark Mortar (or similarly approved)
  - Brick Type 1 and 2 Flemish Bond Mixed Corbel: A2602A Birtley Olde English with Cemex Light Brown Dark Mortar (or similarly approved) and Brick Type 2 Ibstock A5143A New Diana with Cemex Light Brown Dark Mortar (or similarly approved)
  - Brick Type 3 Facing: Ibstock A2232A Staffordshire Slate Blue Smooth with Cemex Black Dark Mortar (or similarly approved)
  - PPC Metal Fins: Dark Grey, RAL TBC
  - Brick Type 4 Facing: Glazed Brick Green
  - Signage zone / Metal Louvre: Dark Grey, RAL TBC
  - Metal Louvre Door: Dark Grey, RAL TBC
  - PPC Aluminium Detailing: Light Precast GRC finish
  - PPC Aluminium Window: Dark Grey, RAL TBC
  - PPC Aluminium Curtain Wall: Dark Grey, RAL TBC
  - Brick Type 4 Facing Running Bond: Ibstock A5143A New Diana with Cemex Dove Holes White Mortar (or similarly approved)
  - Perforated Metal Panel: Dark Grey, RAL TBC
  - Metal Gate: Dark Grey, RAL TBC

<b>A1</b>	Client:
-----------	---------

Project:	Brunner Road Walthamstow
Title:	Proposed East Elevation
Scale:	1:200 @A1
Date:	18.12.24
Drawing No:	(20)_201

Job No:	34011
Status:	DKF
Drawn By:	DKF
Checked By:	AGB
Revision:	P04

**Carey Jones Chapman Tolcher**

Studio 104, 338 Goswell Road  
London EC1V 7LG  
Tel +44(0)20 7269 9400

Studio 2, 56 Wellington Street  
Leeds LS1 2EE  
Tel +44(0)113 224 5000

www.cjctstudios.com

**PLANNING**

Contractor must verify all dimensions on site before commencing any work or shop drawings. If this drawing exceeds the quantities taken in any way the Architects are to be informed before the work is initiated. Only figured dimensions to be taken from this drawing. Do not scale off this drawing. Drawings based on Ordnance Survey and / or existing record drawings - design and drawing content subject to Site Survey, Structural Survey, Site Investigations, Planning and Statutory Requirements and Approvals. Authorised reproduction from Ordnance Survey Map with permission of the Controller of Her Majesty's Stationery Office. Crown Copyright reserved. © careyjoneschapmantolcher (Studio South) Ltd. All Rights Reserved