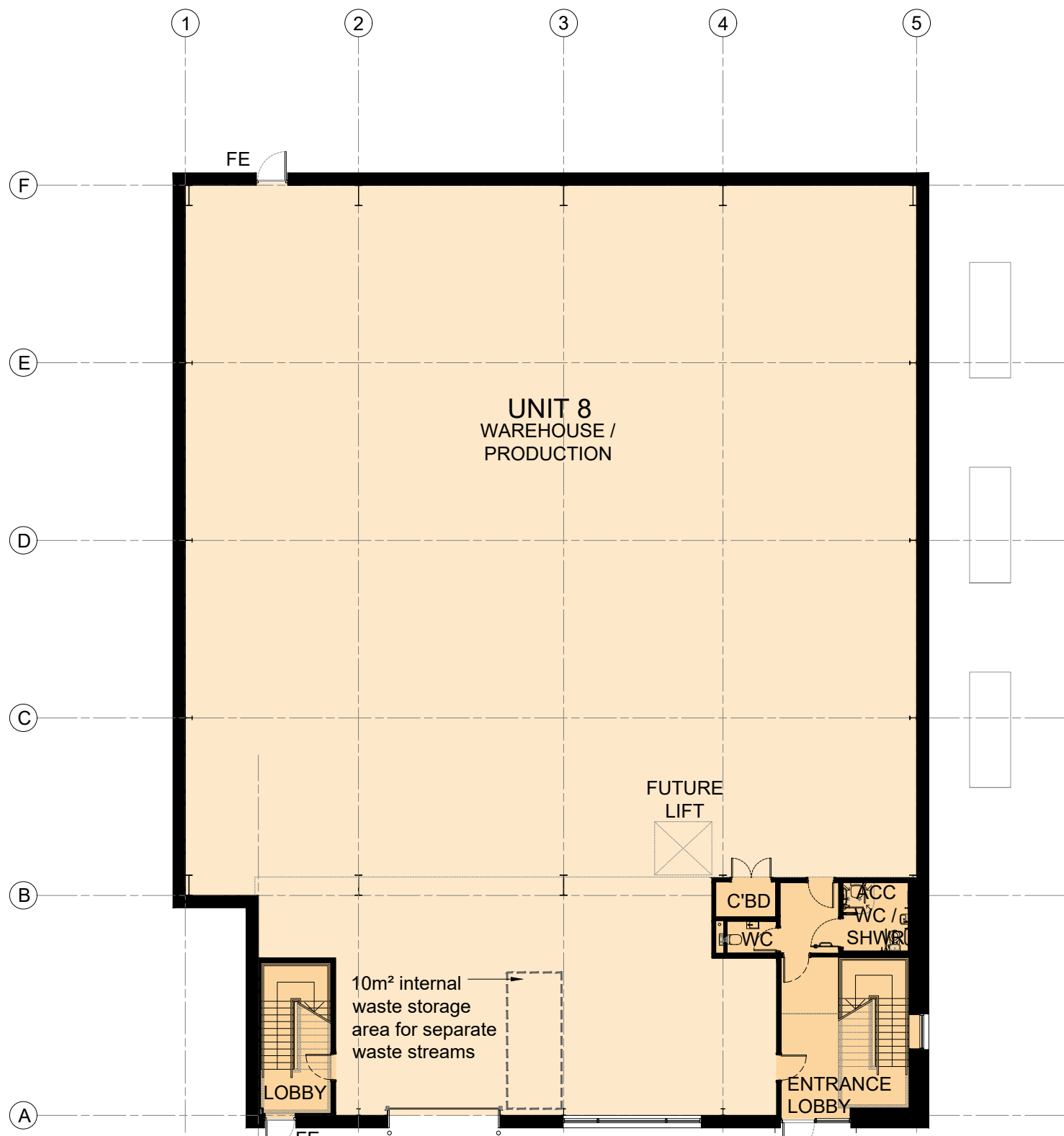


UNIT 8 FIRST FLOOR PLAN



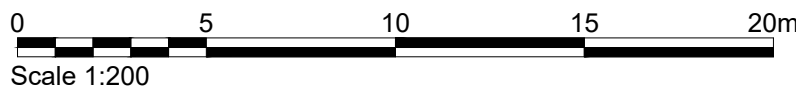
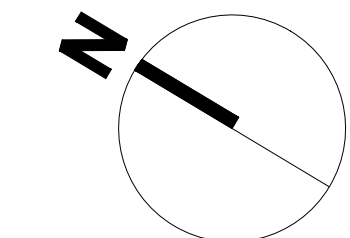
UNIT 8 GROUND FLOOR PLAN

GEA

GF	951m²
FF	230m²
Total	1,181m² / 21,712ft²

GIA

GF	895m²
FF	194m²
Total	1,089m² / 11,721ft²



Client:
EVO INDUSTRIAL

Project:
CHURCH ROAD
LEYTON

Drawing Title:
UNIT 8
PROPOSED FLOOR PLANS

Scale @ A1: 1:200
Checked by: ME
Date: DEC 22
Job No: 11465
Stage: PL
Drawing No: 111
Rev: *

Issue Status:
Construction ☐ Preliminary ☐
Information ☐ Approval ☐
Tender ☐

PRC Architecture & Planning



12 Warren Yard,
Warren Park,
Milton Keynes,
MK12 5NW
01908 305 246

info@prc-group.com
www.prc-group.com

Architecture
Planning
Master Planning
Urban Design
Interiors
Landscape

Offices

Working
London
Milton Keynes
Warsaw