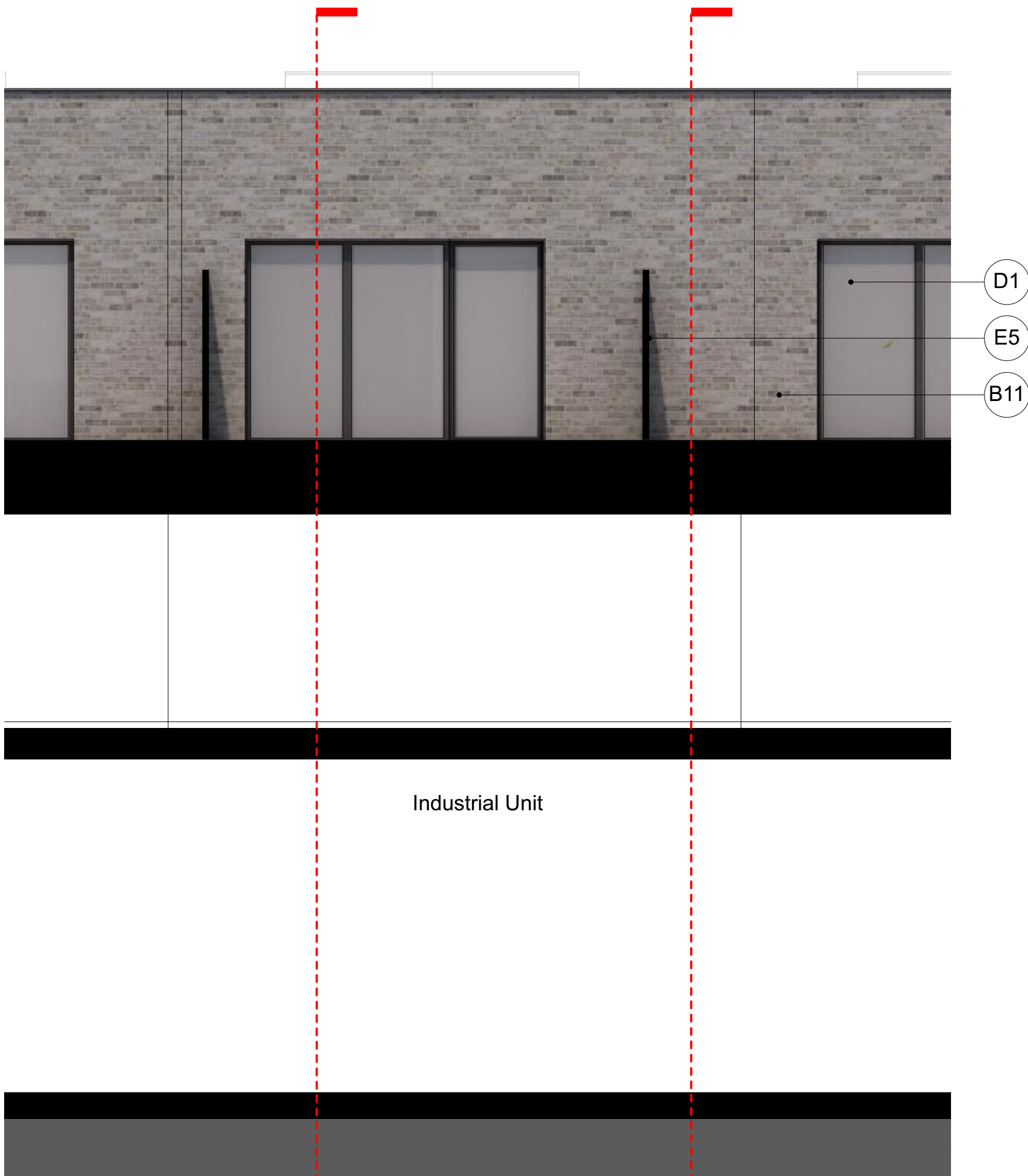
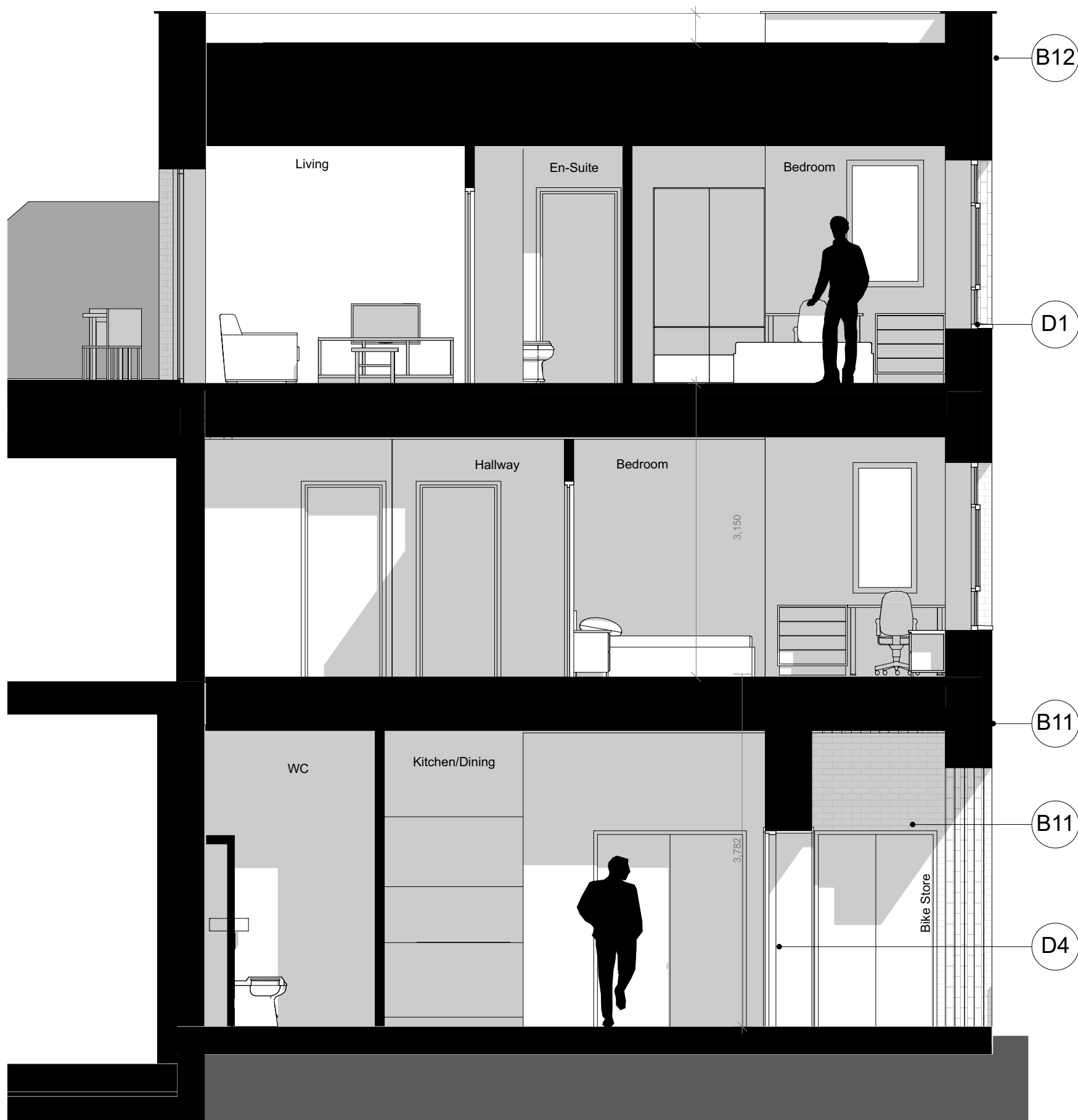




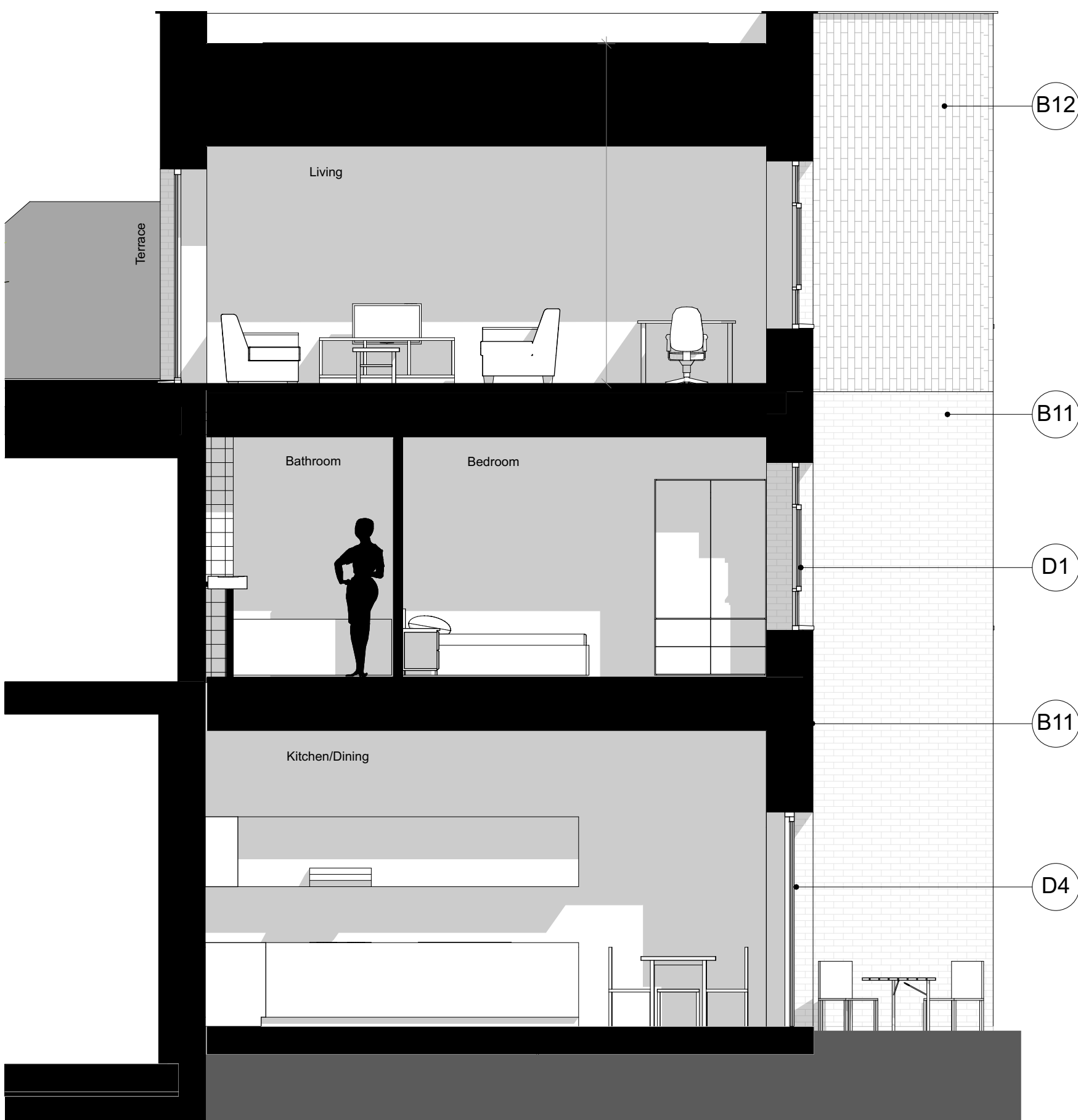
Houses - South Elevation 1:50



Houses - North Elevation 1:50



Houses - Section 1 1:50



Houses - Section 2 1:50

#### Masonry

(Block A)

- B1.** White/Grey variegated stretcher bond brickwork with light mortar joints (Forum Smoked Branco / Cromo Blend by Wienerberger or other similar)  
**B2.** White/Grey horizontal stretcher bond with projecting horizontal brickwork (30mm) with light mortar joints (Forum Smoked Branco by Wienerberger or other similar)

(Block B)

- B4.** Red variegated stretcher bond brickwork with light mortar joints (Oast Russet Sovereign by Wienerberger or other similar)  
**B5.** Red variegated stretcher bond projecting horizontal brickwork (30mm) with light mortar joints (Oast Russet Sovereign by Wienerberger or other similar)

(Block C)

- B6.** Red variegated stretcher bond brickwork with light mortar joints (Autumn Russet Sovereign by Wienerberger or other similar)  
**B7.** Red variegated stretcher bond projecting horizontal brickwork (30mm) with light mortar joints (Autumn Russet Sovereign Red Multi by Wienerberger or other similar)

(Block D)

- B8.** Red variegated stretcher bond brickwork with light mortar joints (Ashington Red Multi by Wienerberger or other similar)  
**B9.** Red variegated stretcher bond projecting horizontal brickwork (30mm) with light mortar joints (Ashington Red Multi by Wienerberger or other similar)  
**B10.** Dark Red variegated stretcher bond brickwork with brown mortar joints around entrance and building base (Ashington Red Multi by Wienerberger or other similar) (Houses)

- B11.** Bright buff variegated stretcher bond brickwork with light mortar joints (Marziale by Wienerberger or other similar)  
**B12.** Bright buff vertical stack bond with projecting brickwork (30mm) with light mortar joints (Marziale by Wienerberger or other similar)  
**B13.** Pre-cast concrete panel to base and entrances commercial units - visual grade concrete (Evans concrete or other similar) (Entrances)

- B14.** Projecting GRC detail to bottom of horizontal brickwork bands (Bath by WetCast or other similar) (Block A detail tbc)  
**B15.** Detail/ signage zone to main entrances of cores B and C (Bath by WetCast or other similar)  
**B16.** Sill/coping GRC detail to top of horizontal brickwork (Bath by WetCast or other similar)  
**B17.** Cement board soffits to underside of entrances to match GRC

- B18.** Glazed tiles zone to entrance lobbies and cycle stores  
**B19.** Stepped brickwork to form vertical recessed fluting to entrances  
**B20.** GRC panel to column base and entrance block A (Both by WetCast or similar) (Block E)

- B21.** Light buff variegated stretcher bond brickwork with light mortar joints (Wienerberger Anglesey Weathered Buff or other similar)  
**B22.** Light buff horizontal stretcher bond with projecting horizontal brickwork (30mm) with light mortar joints (Wienerberger Anglesey Weathered Buff or other similar)  
**B23.** GRC horizontal banding, white finish, projecting approx. 20mm from brickwork.  
**B24.** GRC parapet, light brown finish (to match brickwork colour) with alternating straight and curved pattern.

#### Cladding

(Workspace)

- C1.** Black Polyester coated corrugated metal sheeting (600 x 20) square profile with varying gauges (Carraine by Arcelor Mittal or similar)  
**C2.** PPC Aluminium spandrel panel, colour to match  
**C3.** PPC Aluminium trim and capping detail, colour to match

#### Windows / Doors

- D1.** Powder coated aluminium/timber composite windows with matching aluminium sills (Rational or similar, Block A&E RAL 8019, Block B RAL 7006, Block C&D RAL 8017, House RAL 8019 or other similar)  
Deep reveals one brick return (min. 200mm) to all windows and doors. PPC aluminium flashings as required to head and jambs.  
**D2.** Powder coated aluminium glazed shopfront system with aluminium columns, solid base kick plate and decorative signage zone (Block A RAL 8019, Block B RAL 7006, Block C&D RAL 8017, Block E RAL 1019, House RAL 8019 or other similar)  
Reveal one brick return (min. 200mm) to all windows and doors. PPC aluminium flashings as required to head and jambs.  
**D3.** BLOCK ENTRANCE DOOR - Powder coated aluminium door set with solid base kick plate and decorative signage zone, glazed sidelights.  
**D4.** HOUSE FRONT DOOR Residential doorset with glazed sidelight. Colour RAL8019

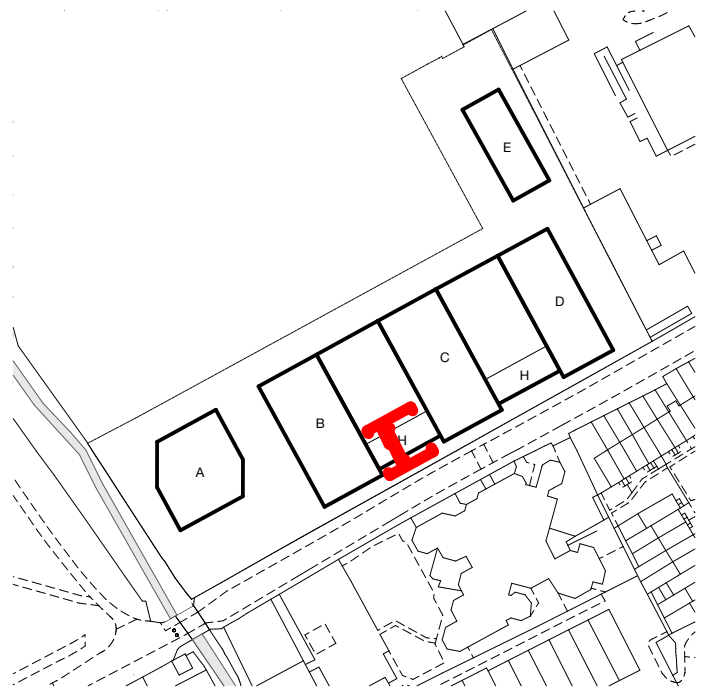
- D5.** BIKE / BIN STORE DOORS PPC steel frame with PPC metal profiled fins forming bike store / bin store gate infill. Colour to match window frames.  
**D6.** PLANT ROOM DOORS PPC steel frame with PPC vertical metal profiled fins forming bike store / bin store gate infill. Colour to match window frames.  
**D7.** CAR PARK ENTRANCE Metal roller shutter Doors – PPC metal roller shutter colour to match windows  
**D8.** COVERD YARD ENTRANCE Black PPC galvanised steel gate and frame structure with mesh infill (RAL 9004 or other similar)  
**D9.** Block E: Solid window sill/panel, integrated in window system, powder coated aluminium with fins to match ground first floor design, RAL 8019  
**D10.** Block A: Solid window sill/panel, integrated in window system, powder coated aluminium with zig-zag balustrade design, RAL 8019  
**D11.** Block A: Wintergardens; Solarlux (or similar) all-glass slide-and-turn system, powder coated RAL 8019 colour frames

#### Balconies

- E1.** TYPE 1 – projecting metal balcony PPC metal balustrade with integrated handrail, colour to match windows  
**E2.** TYPE 2 – recessed balcony PPC metal balustrade with integrated handrail, colour to match windows  
**E3.** Juliet Balcony PPC metal balustrade with integrated handrail, colour to match windows  
**E4.** Top fixed steel balcony PPC metal balustrade with integrated handrail with decorative pattern to match balcony screens to top brick walls, colour to match windows  
**E5.** privacy screen PPC frame with solid infill plate

#### Metal work

- F1.** PPC metal gutter / RWP  
**F2.** PPC metal railing with gate  
**F3.** PPC metal railing balustrade  
**F4.** Mail boxes  
**F5.** PPC Aluminium coping colour to match windows  
**F6.** PPC Metal canopy  
**F7.** Metal panel to head of window frame



P01 15/12/2022 Planning Resubmission  
rev date description

**stock wool**

The Pump House 19 Hooper Street  
London E1 8BU 020 7264 8600  
info@stockwool.co.uk

Client  
**Marsh Lane (Leyton) LLP**

Project  
**Marsh Lane, Leyton**

Drawing  
**Houses Elevations (South)**

Project status  
**PLANNING**

Scale 1:50@A1  
CAD File 3549\_MainModel  
Date created  
Drawn  
Checked

Project no\_Drawing no\_Revision  
**3549\_PL(20)409\_P01**