

- ▼

C1ZZ-LRF-FFL

57500

—

—
- ▼

C1ZZ-L13-FFL

53825

—

—
- ▼

C1ZZ-L12-FFL

50675

—

—
- ▼

C1ZZ-L11-FFL

47525

—

—
- ▼

C1ZZ-L10-FFL

44375

—

—
- ▼

C1ZZ-L09-FFL

41225

—

—
- ▼

C1ZZ-L08-FFL

38075

—

—
- ▼

C1ZZ-L07-FFL

34925

—

—
- ▼

C1ZZ-L06-FFL

31775

—

—
- ▼

C1ZZ-L05-FFL

28100

—

—
- ▼

C1ZZ-L04-FFL

24950

—

—
- ▼

CZZZ-L03-FFL

21800

—

—
- ▼

CZZZ-L02-FFL

18650

—

—
- ▼

CZZZ-L01-FFL

15500

—

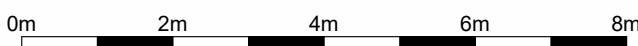
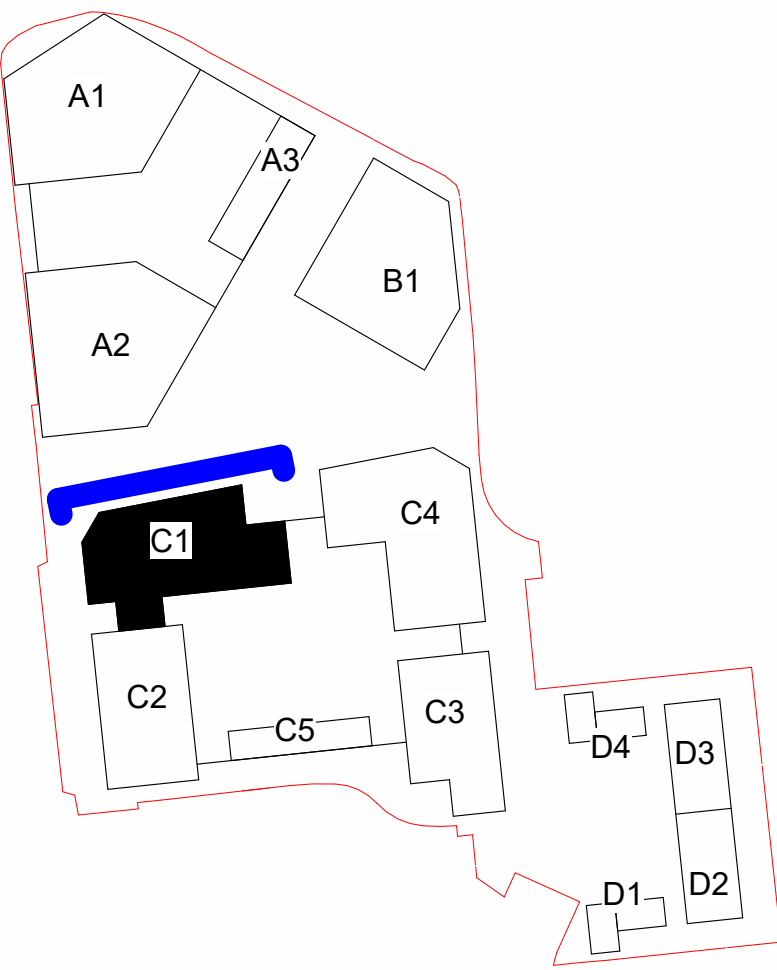
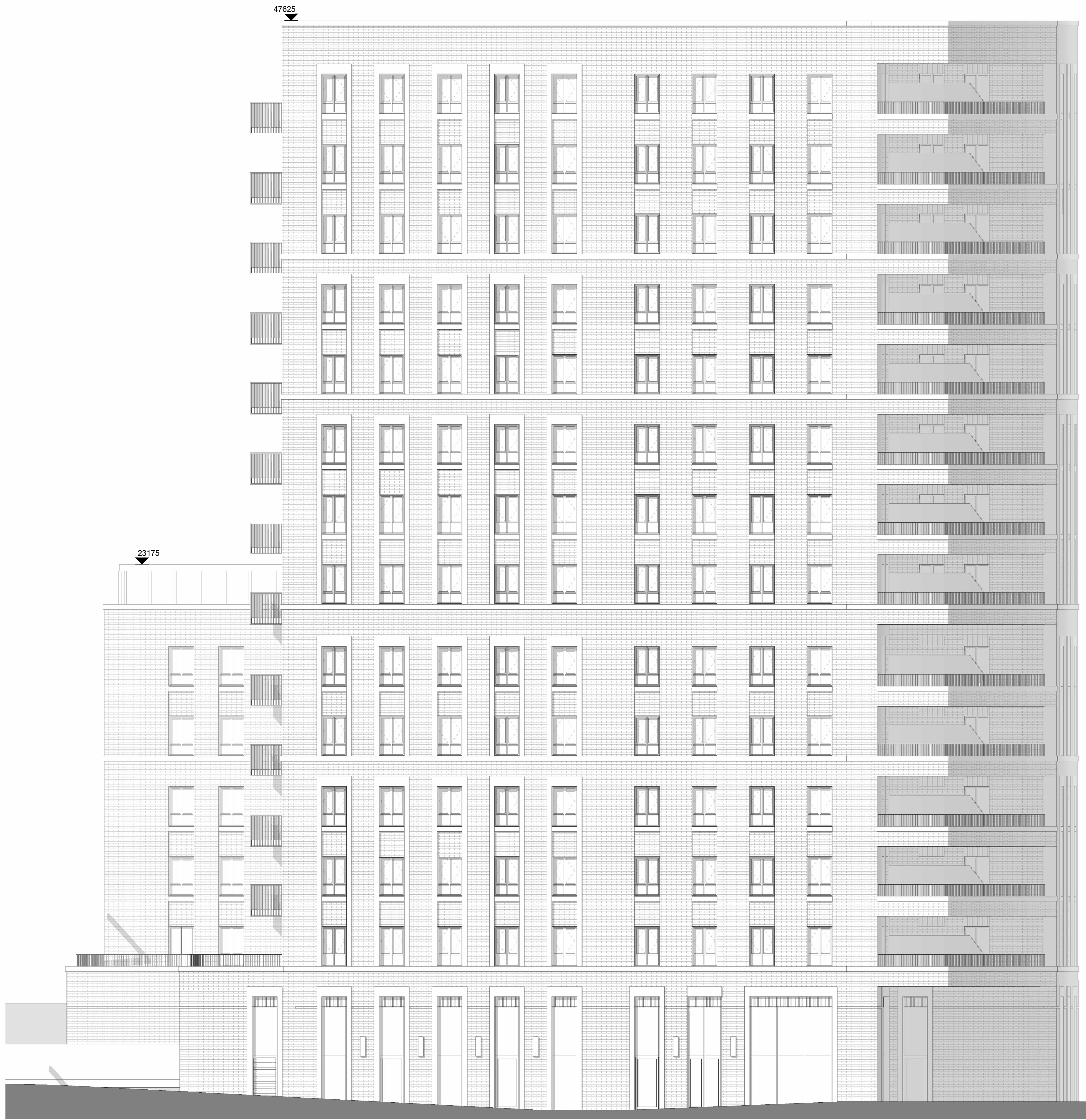
—
- ▼

C1ZZ-L00-FFL

9650

—

—



CDM REGULATIONS 2015. All current drawings and specifications for the project must be read in conjunction with the Designer's Hazard and Environment Assessment Record. All intellectual property rights reserved.

Site levels, topography and setting out based on surveys, information and reports listed below:
Laser Surveys L9870 REV n/a dated 01.09.2020
VuCity 200916 REV n/a dated 16.02.2020

Lines shown within plots are indicative only.
Lift motor rooms, plant, plan acoustics surrounds and flue extracts will not exceed three meters in height above stated AOD.
Top parapets levels will not exceed 2.5m above indicated AOD with a construction tolerance of +/- one meter.

Rev	Date	Description
P00	11/01/23	Design Update

Dwn	Ckd
AC	AC

Drawn	AV
Checked	CC
Date	SEPTEMBER 2022
Scale @ A1	1 : 100

Avenue Road Estate
Proposed Plot C Block 1 North Elevation

ARE- PRP- C1Z- ZZ- DR- A-02300
P00 - FOR PLANNING

