



Strategic Partnership Boards

SAFETY SAFEGUARDING WELLBEING

Addressing Health Inequalities in Waltham Forest

Joe McDonnell, Director of Public Health

24th January 2023



Context | Health Inequalities commission



We commissioned independent research from Professor Sir Michael Marmot and the Institute of Health Equality (IHE) which was published on 8th December 2022

A key objective was to gain a deeper understanding and oversight of health inequalities across the borough, and how these vary in different areas.

The final report highlights deprivation and disproportionality experienced throughout the borough and system-wide recommendations to reduce local health inequalities and create a fairer future for residents of Waltham Forest.

ASKS OF THE BOARD

- « Review the report and consider internal strategies against the recommendations
- « Commit to joint working with Waltham Forest Council to co-develop / deliver a system wide action plan



Health Inequalities | Marmot Recommendations

The Institute of Health Equity report suggests recommendations for action in Waltham Forest, 84 recommendations across the Marmot 8 principles alongside additional system wide recommendations that will enable, support and sustain the implementation of actions to improve health inequalities.



MARMOT 8 PRINCIPLES



**DEVELOPING A HEALTH
EQUITY SYSTEM ACROSS
WALTHAM FOREST**



**ORGANISATIONAL / SECTOR
RECOMMENDATIONS**



The Marmot Eight Principles | Recommendations

The Waltham Forest recommendations to reduce health inequalities are divided into one of the eight policy objectives outlined in 'Fair Society, Healthy Lives' and in the follow-up report, 'Health Equity in England: The Marmot Review 10 Years On' and 'Build Back Fairer' report on tackling the aftermath of the COVID-19 pandemic.

1 
give every child the best start in life

2 
enable all children, young people & adults to maximise their capabilities & have control over their lives

3 
create fair employment & good work for all

4 
ensure a healthy standard of living for all

5 
create & develop healthy & sustainable places & communities

6 
strengthen the role & impact of ill-health prevention

7 
tackle discrimination, racism & their outcomes

8 
pursue environmental sustainability & health equity together

8

The 84 recommendations across the Marmot principles will improve social and environmental conditions in which people grow, live, work and age. Addressing these actions will shape and drive improvements in health outcomes through an individuals entire life course and create the conditions that enable people to have control over their lives



Health Equity System | Recommendations

The health equity system recommendations have been categorised into the following four areas:

1



**Health Equity
Leadership and
Oversight**

2



**Monitoring For
Health Equity**

3



**Strengthen
Partnerships For
Health Equity**

4



**Increased and
More Equitably
Allocated
Resources**



The recommendations for health equity system will embed the systemic improvements required to ensure everyone has a fair and just opportunity to attain their highest level of health.



Organisational | Recommendations

In addition to the Marmot principles and Health Equity System recommendations, there are a number of sector-specific recommendations for the following organisations.

Meeting the ambitions of the IHE's suggested recommendations will require this Board to adopt a crucial role in creating solutions that address health inequalities within individual sectors as well as across the broader system.



- **Trusts & primary care**
- **ICS**



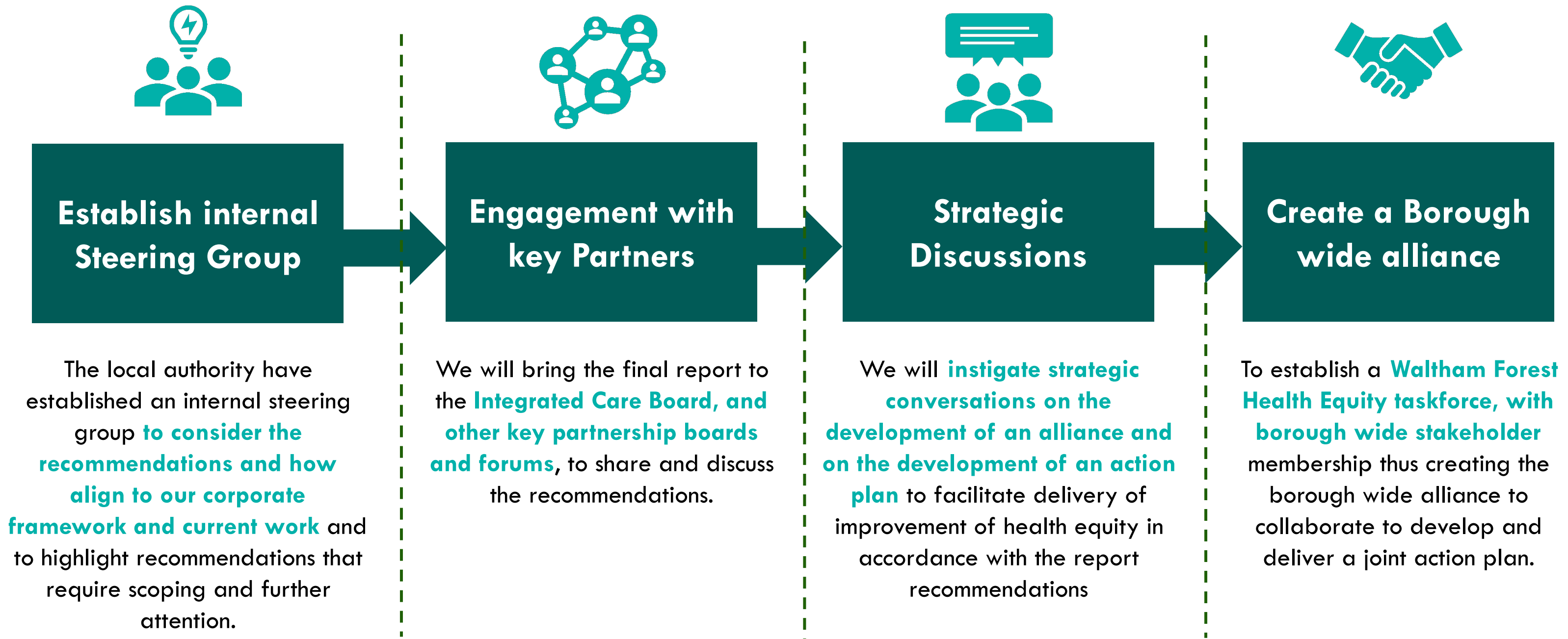
A set of recommended actions that each sector or organisation can take action on the social determinants of health within their own organisation and as part of the wider health equity system in Waltham Forest.



Developing the Waltham Forest Response

The IHE's final report and recommendations are transformational and in order to provide a comprehensive response to this call to action a borough wide partnership and collaboration will be required.

The next proposed steps are:



Next steps | Proposed Response Overview

Phase one (Jan 23)

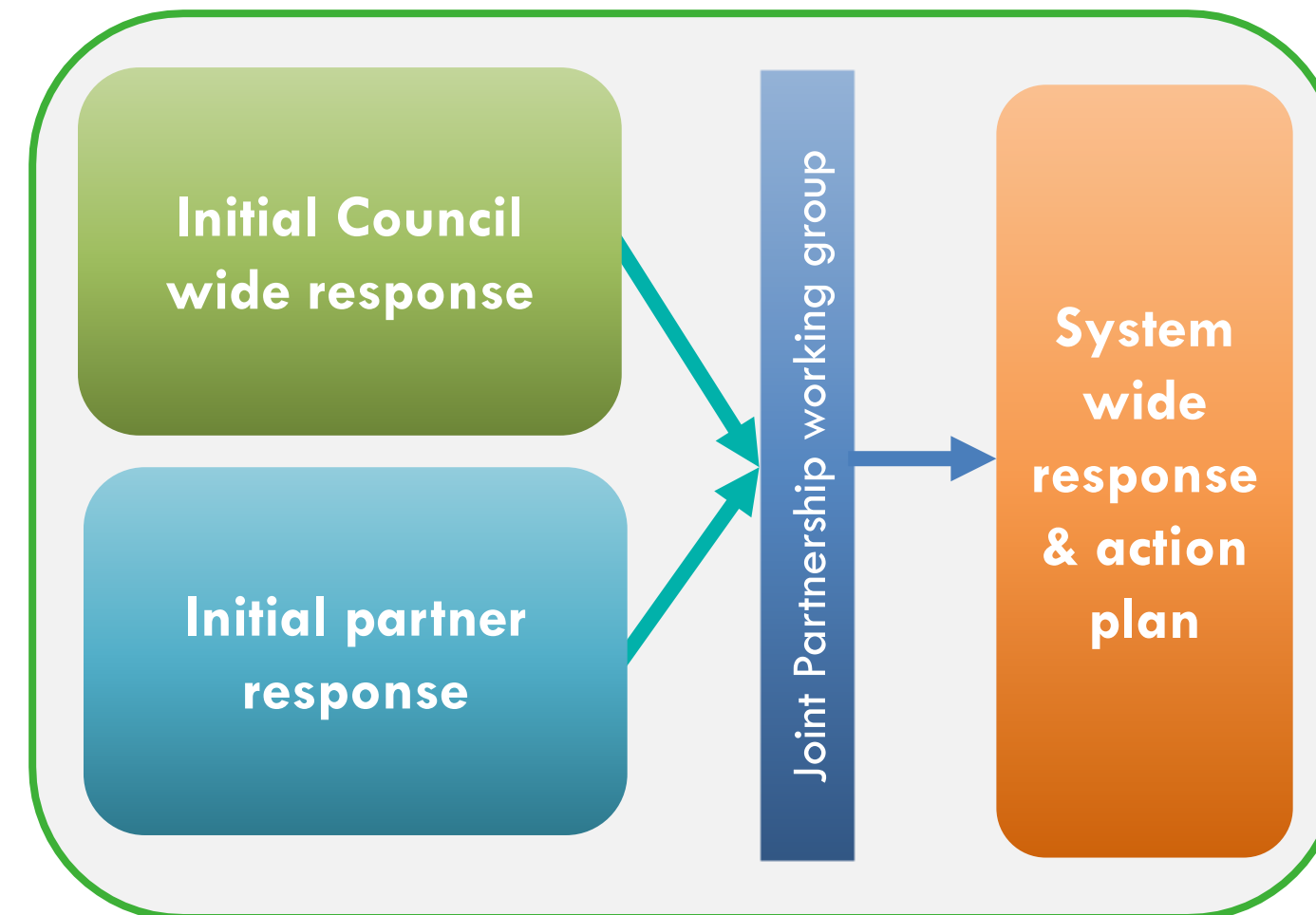
- « Initial mapping of existing strategies against Marmots eight principles and Health Equity and Organisational recommendations.

Phase two (Feb – Mar 23)

- « ICS Summit
- « Establish partnership working group to co-develop the joint action plan
- « Identifying individual and shared whole system organisational priorities and ownership.

Phase three (Apr – June 23)

- « Partnership conference to shape the system wide response
- « Co-developed action plan & joint response



ASK OF BOARD

- « Agree to commit to joint working with Waltham Forest Council and borough wide stakeholders to co-develop a joint response and system wide action plan

