

- Notes:
- Do not scale from this drawing; work to figured dimensions only.
 - All information is to be checked on site for accuracy and fit.
 - Report any discrepancies and omissions to RMA Architects.

H&S Notes - "ERIC" (Eliminate, Reduce, Isolate, Control)



- Where RMA services on a project do not include for site inspections and works surveys, RMA do not warrant that 'as built' issue drawings are a complete and accurate record of what has been constructed.
- Unless notified specifically by the responsible party, changes made on site to RMA design information has not been incorporated in this drawing.

SCALE BAR: 1:250 @A1, 1:500 @A3

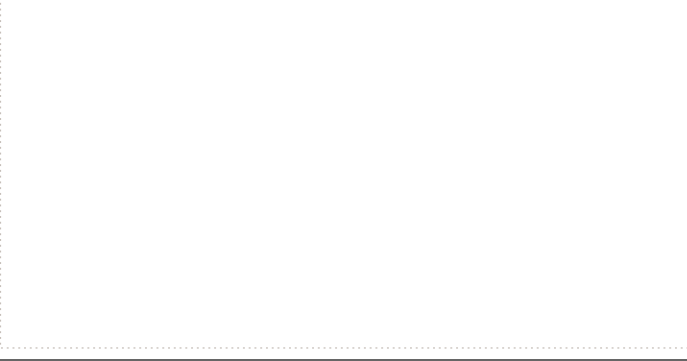


Diagram Key

A	19.11.21	Planning Submission	NK	CT
Rev	Date	Description	By	Chkd

RM_A
320C Highgate Studios
53-79 Highgate Road, London, NW5 1TL
020 7284 1414, rmaarchitects.co.uk

Key Plan



Project
806 Leyton High Road

Client			
WOOLBRO GROUP			
Scale	Date	By	Checked
1:250 @A1 1:500 @A3	MAY 21	NK	CT

Drawing Title
**Site Plan
Existing**

Drawing Status PLANNING	
Drawing No 2172_0001	Revision A

- Notes:
- Do not scale from this drawing; work to figured dimensions only.
- All information is to be checked on site for accuracy and fit.
- Report any discrepancies and omissions to RMA Architects.

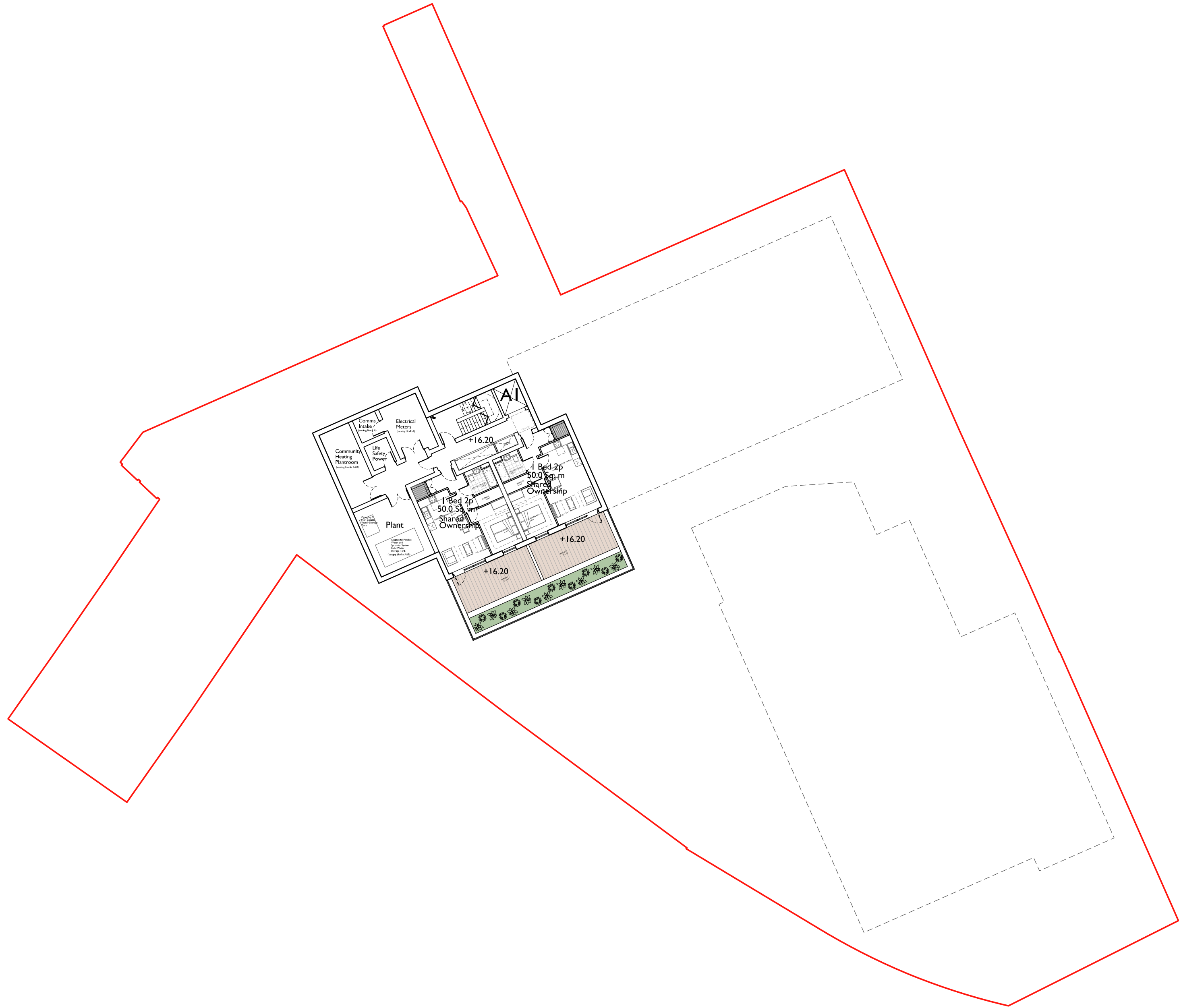
H&S Notes - "ERIC" (Eliminate, Reduce, Isolate, Control)

- Where RMA services on a project do not include for site inspections and works surveys, RMA do not warrant that 'as built' issue drawings are a complete and accurate record of what has been constructed. Unless notified specifically by the responsible party, changes made on site to RMA design information has not been incorporated in this drawing.

SCALE BAR: 1:250 @A1, 1:500 @A3



Diagram Key



I	20.10.22	Label additions	NK	CT
H	01.08.22	Post Planning Submission	NK	CT
G	19.11.21	Planning Submission	NK	CT
Rev	Date	Description	By	Chkd

RM_A

320C Highgate Studios
53-79 Highgate Road, London, NW5 1TL
020 7284 1414, rmaarchitects.co.uk

Key Plan

Project

806 Leyton High Road

Client

WOOLBRO
GROUP



WOOLBRO
GROUP

Scale		Date	By	Checked
1:250	@A1	AUG 21	NK	CT
1:500	@A3			

Drawing Title

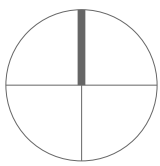
Lower Ground Floor Layout

Drawing Status

PLANNING

Drawing No
2172_0099

revision





- Notes:
- Do not scale from this drawing; work to figured dimensions only.
 - All information is to be checked on site for accuracy and fit.
 - Report any discrepancies and omissions to RMA Architects.

H&S Notes - "ERIC" (Eliminate, Reduce, Isolate, Control)

- Where RMA services on a project do not include for site inspections and works surveys, RMA do not warrant that 'as built' issue drawings are a complete and accurate record of what has been constructed.
- Unless notified specifically by the responsible party, changes made on site to RMA design information has not been incorporated in this drawing.

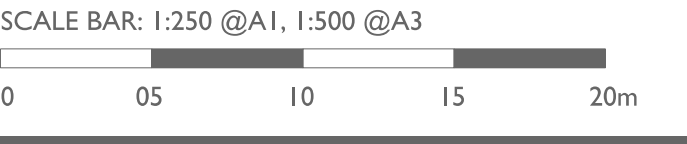


Diagram Key

U	20.10.22	Label additions	NK	CT
T	15.08.22	Refuse Collection Zone	NK	CT
S	09.08.22	Label update	NK	CT
R	18.07.22	Block C Gate	NK	CT
Q	04.07.22	Landscape and ground floor updates	NK	CT
P	08.06.22	Parking update	NK	CT
O	06.06.22	Parking and cycle store updates	NK	CT
N	16.04.22	Post Submission amendments	NK	CT
M	25.03.22	Amendments	NK	CT
L	19.11.21	Planning Submission	NK	CT
Rev	Date	Description	By	Chkd

RM_A
320C Highgate Studios
53-79 Highgate Road, London, NW5 1TL
020 7284 1414, rmaarchitects.co.uk

Key Plan

Project
806 Leyton High Road

Client
WOOLBRO GROUP



Scale	Date	By	Checked
1:250 @A1 1:500 @A3	MAY 21	NK	CT

Drawing Title
Ground Floor Layout

Drawing Status PLANNING	Revision U
Drawing No 2172_0100	

Drawing Status PLANNING	
Drawing No 2172_0101	Revision P



Notes:

- Do not scale from this drawing; work to figured dimensions only.
- All information is to be checked on site for accuracy and fit.
- Report any discrepancies and omissions to RMA Architects.

H&S Notes - "ERIC" (Eliminate, Reduce, Isolate, Control)

• Where RMA services on a project do not include for site inspections and works surveys, RMA do not warrant that 'as built' issue drawings are a complete and accurate record of what has been constructed.

• Unless notified specifically by the responsible party, changes made on site to RMA design information has not been incorporated in this drawing.

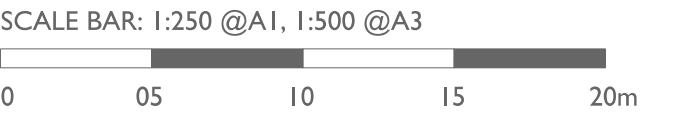


Diagram Key

N	20.10.22	Label additions	NK	CT
M	24.08.22	A1 & A2 update	NK	CT
L	01.06.22	Post Planning Submission	NK	CT
K	16.04.22	Post Submission amendments	NK	CT
J	25.03.22	Amendments	NK	CT
I	19.11.21	Planning Submission	NK	CT
Rev	Date	Description	By	Chkd

RM_A

320C Highgate Studios
53-79 Highgate Road, London, NW5 1TL
020 7284 1414, rmaarchitects.co.uk

Key Plan

Project

806 Leyton High Road

Client

WOOLBRO GROUP

Scale	Date	By	Checked
1:250 @A1	MAY 21	NK	CT
1:500 @A3			

Drawing Title

Level 2 Layout

Drawing Status	Revision
PLANNING	
Drawing No	
2172_0102	N



- Notes:
- Do not scale from this drawing; work to figured dimensions only.
 - All information is to be checked on site for accuracy and fit.
 - Report any discrepancies and omissions to RMA Architects.

H&S Notes - "ERIC" (Eliminate, Reduce, Isolate, Control)

- Where RMA services on a project do not include for site inspections and works surveys, RMA do not warrant that 'as built' issue drawings are a complete and accurate record of what has been constructed.
- Unless notified specifically by the responsible party, changes made on site to RMA design information has not been incorporated in this drawing.

SCALE BAR: 1:250 @A1, 1:500 @A3



Diagram Key

Rev	Date	Description	By	Chkd
N	20.10.22	Label additions	NK	CT
M	24.08.22	A1 & A2 update	NK	CT
L	01.08.22	Post Planning Submission	NK	CT
K	16.04.22	Post Submission amendments	NK	CT
J	25.03.22	Amendments	NK	CT
I	19.11.21	Planning Submission	NK	CT

RM_A
320C Highgate Studios
53-79 Highgate Road, London, NW5 1TL
020 7284 1414, rmaarchitects.co.uk

Key Plan

Project
806 Leyton High Road

Client
WOOLBRO GROUP



Scale	Date	By	Checked
1:250 @A1	MAY 21	NK	CT
1:500 @A3			

Drawing Title

Level 3 Layout

Drawing Status	Revision
PLANNING	
Drawing No 2172_0103	Revision N



- Notes:
- Do not scale from this drawing; work to figured dimensions only.
 - All information is to be checked on site for accuracy and fit.
 - Report any discrepancies and omissions to RMA Architects.

H&S Notes - "ERIC" (Eliminate, Reduce, Isolate, Control)

- Where RMA services on a project do not include for site inspections and works surveys, RMA do not warrant that 'as built' issue drawings are a complete and accurate record of what has been constructed.
- Unless notified specifically by the responsible party, changes made on site to RMA design information has not been incorporated in this drawing.

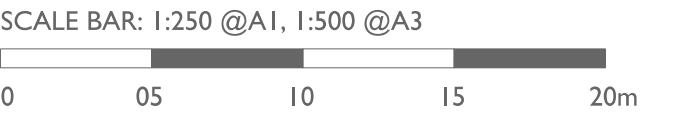


Diagram Key

Rev	Date	Description	By	Chkd
N	20.10.22	Label additions	NK	CT
M	01.08.22	Post Planning Submission	NK	CT
L	16.04.22	Post Submission amendments	NK	CT
K	25.03.22	Amendments	NK	CT
J	19.11.21	Planning Submission	NK	CT

RM_A
320C Highgate Studios
53-79 Highgate Road, London, NW5 1TL
020 7284 1414, rmaarchitects.co.uk

Key Plan

Project
806 Leyton High Road

Client			
WOOLBRO GROUP			
Scale	Date	By	Checked
1:250 @A1	MAY 21	NK	CT
1:500 @A3			

Drawing Title
Level 4 Layout

Drawing Status	
PLANNING	
Drawing No	Revision
2172_0104	N



- Notes:
- Do not scale from this drawing; work to figured dimensions only.
 - All information is to be checked on site for accuracy and fit.
 - Report any discrepancies and omissions to RMA Architects.

H&S Notes - "ERIC" (Eliminate, Reduce, Isolate, Control)

- Where RMA services on a project do not include for site inspections and works surveys, RMA do not warrant that 'as built' issue drawings are a complete and accurate record of what has been constructed.
- Unless notified specifically by the responsible party, changes made on site to RMA design information has not been incorporated in this drawing.

Diagram Key

J	20.10.22	Label additions	NK	CT
I	01.08.22	Post Planning Submission	NK	CT
H	16.04.22	Post Submission amendments	NK	CT
G	25.03.22	Amendments	NK	CT
F	19.11.21	Planning Submission	NK	CT
Rev	Date	Description	By	Chkd

RM_A
320C Highgate Studios
53-79 Highgate Road, London, NW5 1TL
020 7284 1414, rmaarchitects.co.uk

Key Plan

Project
806 Leyton High Road

Client
WOOLBRO GROUP



Scale	Date	By	Checked
1:250 1:500	@A1 @A3	NK	CT

Drawing Title
Level 5 Layout

Drawing Status PLANNING	Revision J
Drawing No 2172_0105	



- Notes:
- Do not scale from this drawing; work to figured dimensions only.
 - All information is to be checked on site for accuracy and fit.
 - Report any discrepancies and omissions to RMA Architects.

H&S Notes - "ERIC" (Eliminate, Reduce, Isolate, Control)

- Where RMA services on a project do not include for site inspections and works surveys, RMA do not warrant that 'as built' issue drawings are a complete and accurate record of what has been constructed.
- Unless notified specifically by the responsible party, changes made on site to RMA design information has not been incorporated in this drawing.

Diagram Key

K	01.08.22	Post Planning Submission	NK	CT
J	16.04.22	Post Submission amendments	NK	CT
I	19.11.21	Planning Submission	NK	CT
Rev	Date	Description	By	Chkd

RM_A
320C Highgate Studios
53-79 Highgate Road, London, NW5 1TL
020 7284 1414, rmaarchitects.co.uk

Key Plan

Project
806 Leyton High Road

Client
WOOLBRO GROUP



Scale	Date	By	Checked
1:250 1:500	@A1 @A3	NK	CT

Drawing Title
Roof Layout

Drawing Status PLANNING	Revision K
Drawing No 2172_0106	

EAST ELEVATION

SOUTH ELEVATION



- Notes:
- Do not scale from this drawing; work to figured dimensions only.
 - All information is to be checked on site for accuracy and fit.
 - Report any discrepancies and omissions to RMA Architects.

H&S Notes - "ERIC" (Eliminate, Reduce, Isolate, Control)

- Where RMA services on a project do not include for site inspections and works surveys, RMA do not warrant that 'as built' issue drawings are a complete and accurate record of what has been constructed.
- Unless notified specifically by the responsible party, changes made on site to RMA design information has not been incorporated in this drawing.

SCALE BAR: 1:200 @A1, 1:400 @A3

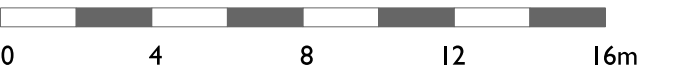


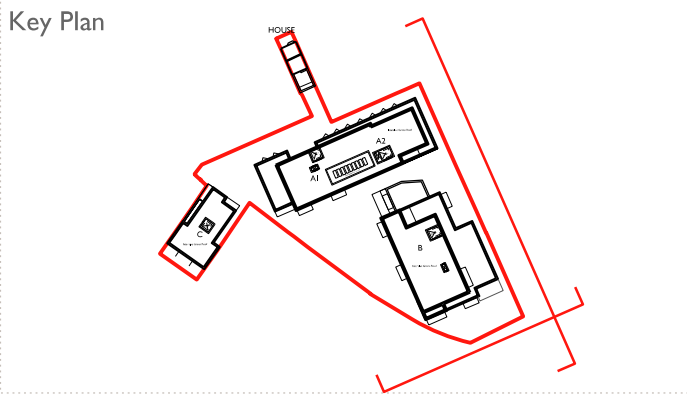
Diagram Key

Existing cinema outline

H	01.08.22	Post Planning Submission	NK	CT
G	25.03.22	Amendments	NK	CT
F	19.11.21	Planning Submission	NK	CT
Rev	Date	Description	By	Chkd

RM_A

320C Highgate Studios
53-79 Highgate Road, London, NW5 1TL
020 7284 1414, rmaarchitects.co.uk



Project
806 Leyton High Road

Client
WOOLBRO GROUP

Scale Date By Checked
1:200 @A1 MAY 21 NK CT
1:400 @A3

Drawing Title
Elevations
East and South

Drawing Status
PLANNING
Drawing No 2172_0200
Revision H

- Notes:
- Do not scale from this drawing; work to figured dimensions only.
 - All information is to be checked on site for accuracy and fit.
 - Report any discrepancies and omissions to RMA Architects.

H&S Notes - "ERIC" (Eliminate, Reduce, Isolate, Control)

- Where RMA services on a project do not include for site inspections and works surveys, RMA do not warrant that 'as built' issue drawings are a complete and accurate record of what has been constructed,
- Unless notified specifically by the responsible party, changes made on site to RMA design information has not been incorporated in this drawing.

SCALE BAR: 1:200 @A1, 1:400 @A3



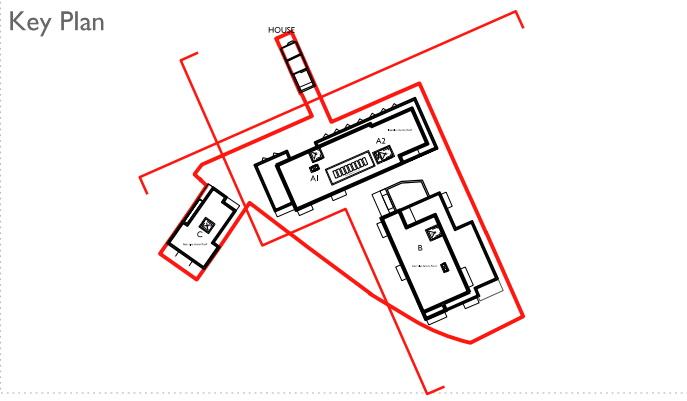
Diagram Key

----- Existing cinema outline

H	01.06.22	Post Planning Submission	NK	CT
G	25.03.22	Amendments	NK	CT
F	19.11.21	Planning Submission	NK	CT
Rev	Date	Description	By	Chkd

RM_A

320C Highgate Studios
53-79 Highgate Road, London, NW5 1TL
020 7284 1414, rmaarchitects.co.uk



Project
806 Leyton High Road

Client		WOOLBRO GROUP	
Scale	Date	By	Checked
1:200 1:400	MAY 21	NK	CT

Drawing Title
Elevations
West and North

Drawing Status PLANNING	Revision H
Drawing No 2172_0201	



WEST ELEVATION



NORTH ELEVATION



SOUTH ELEVATION
BLOCK A



NORTH ELEVATION
BLOCK B

- Notes:
- Do not scale from this drawing; work to figured dimensions only.
 - All information is to be checked on site for accuracy and fit.
 - Report any discrepancies and omissions to RMA Architects.

H&S Notes - "ERIC" (Eliminate, Reduce, Isolate, Control)

- Where RMA services on a project do not include for site inspections and works surveys, RMA do not warrant that 'as built' issue drawings are a complete and accurate record of what has been constructed.
- Unless notified specifically by the responsible party, changes made on site to RMA design information has not been incorporated in this drawing.

SCALE BAR: 1:200 @A1, 1:400 @A3

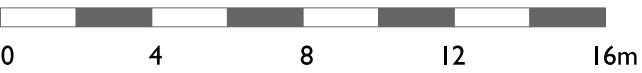


Diagram Key

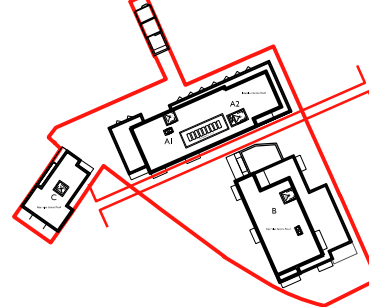
Existing cinema outline

F	01.08.22	Post Planning Submission	NK	CT
E	25.03.22	Amendments	NK	CT
D	19.11.21	Planning Submission	NK	CT
Rev	Date	Description	By	Chkd

RM_A

320C Highgate Studios
53-79 Highgate Road, London, NW5 1TL
020 7284 1414, rmaarchitects.co.uk

Key Plan



Project

806 Leyton High Road

Client

WOOLBRO
GROUP



Scale	Date	By	Checked
1:200 1:400 @A1 @A3	MAY 21	NK	CT

Drawing Title

Elevations
South A and North B

Drawing Status

PLANNING

Drawing No
2172_0202

Revision
F

STREET ELEVATION
HOUSE



REAR ELEVATION
HOUSE



- Notes:
- Do not scale from this drawing; work to figured dimensions only.
 - All information is to be checked on site for accuracy and fit.
 - Report any discrepancies and omissions to RMA Architects.

H&S Notes - "ERIC" (Eliminate, Reduce, Isolate, Control)

- Where RMA services on a project do not include for site inspections and works surveys, RMA do not warrant that 'as built' issue drawings are a complete and accurate record of what has been constructed,
- Unless notified specifically by the responsible party, changes made on site to RMA design information has not been incorporated in this drawing.

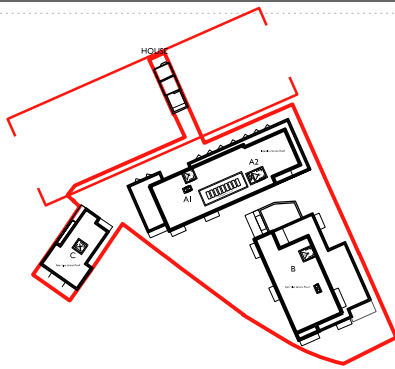
Diagram Key

B	19.11.21	Planning Submission	NK	CT
Rev	Date	Description	By	Chkd

RM_A

320C Highgate Studios
53-79 Highgate Road, London, NW5 1TL
020 7284 1414, rmaarchitects.co.uk

Key Plan



Project

806 Leyton High Road

Client

WOOLBRO GROUP


WOOLBRO
GROUP

Scale	Date	By	Checked
1:200 1:400	@A1 @A3 MAY 21	NK	CT

Drawing Title

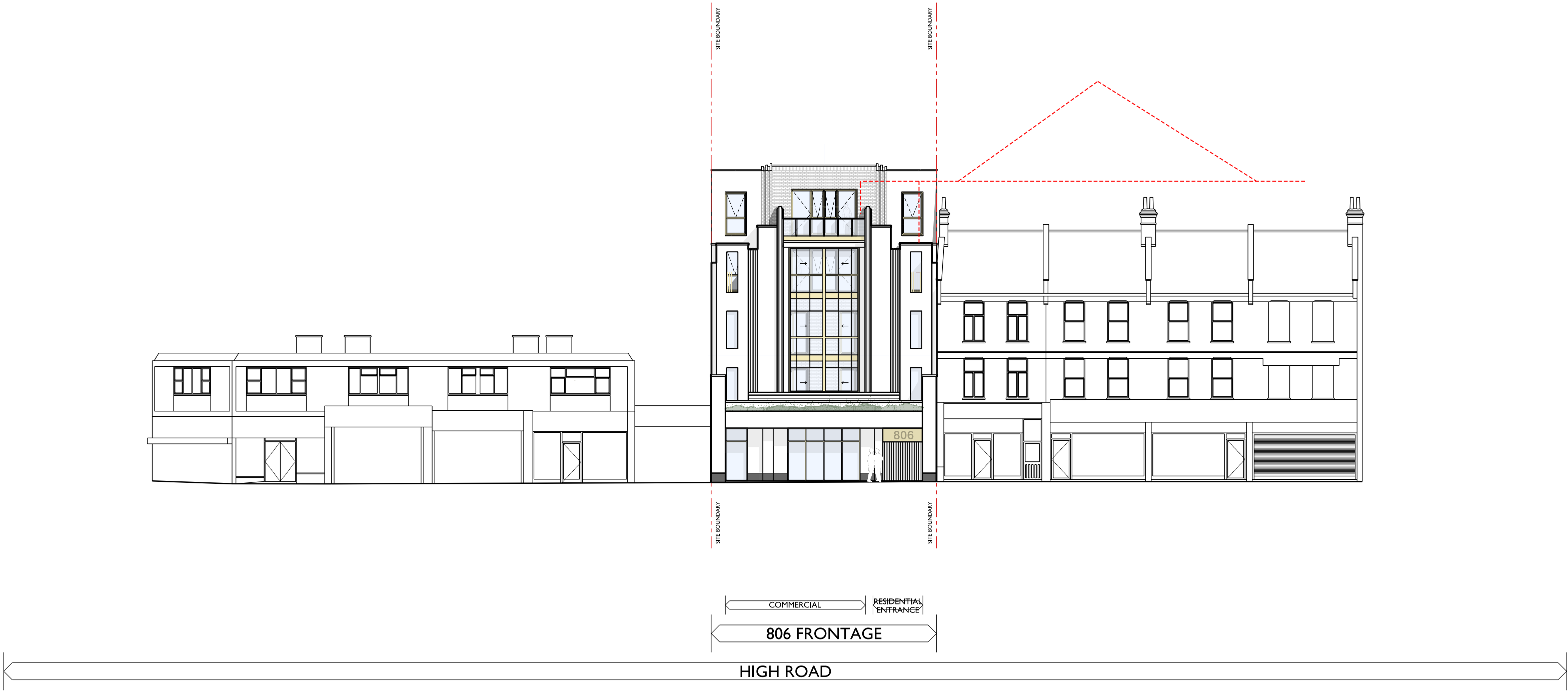
Elevations
House

Drawing Status

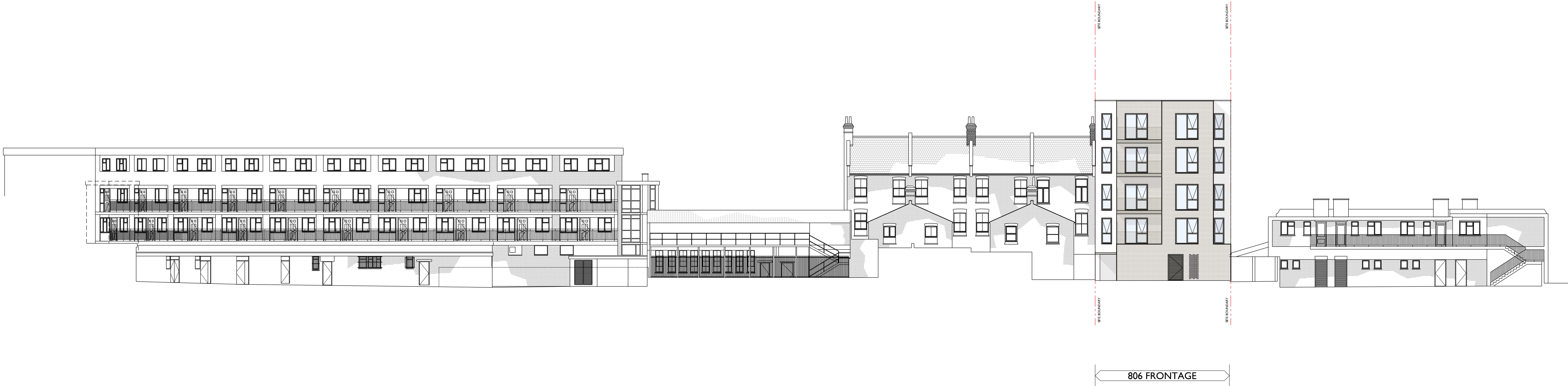
PLANNING

Drawing No	Revision
2172_0203	B

STREET ELEVATION
806 FRONTAGE



REAR ELEVATION
806 FRONTAGE



- Notes:
- Do not scale from this drawing; work to figured dimensions only.
 - All information is to be checked on site for accuracy and fit.
 - Report any discrepancies and omissions to RMA Architects.

H&S Notes - "ERIC" (Eliminate, Reduce, Isolate, Control)

- Where RMA services on a project do not include for site inspections and works surveys, RMA do not warrant that 'as built' issue drawings are a complete and accurate record of what has been constructed.
- Unless notified specifically by the responsible party, changes made on site to RMA design information has not been incorporated in this drawing.

SCALE BAR: 1:200 @A1, 1:400 @A3

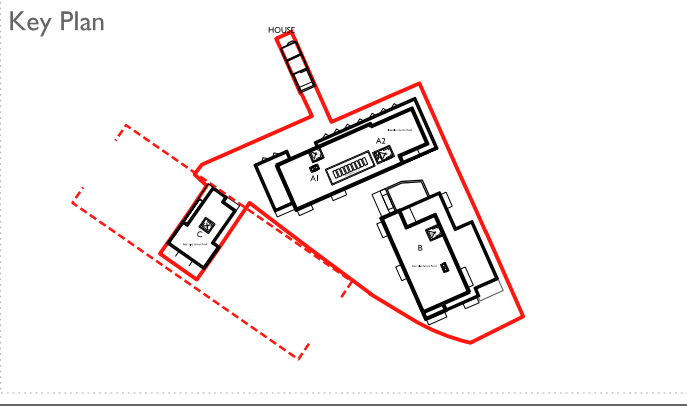
0 4 8 12 16m

Diagram Key

E	01.08.22	Post Planning Submission	NK	CT
D	25.03.22	Amendments	NK	CT
C	19.11.21	Planning Submission	NK	CT
Rev	Date	Description	By	Chkd

RM_A

320C Highgate Studios
53-79 Highgate Road, London, NW5 1TL
020 7284 1414, rmaarchitects.co.uk



Project
806 Leyton High Road

Client
WOOLBRO GROUP

Scale Date By Checked
1:200 @A1 MAY 21 NK CT
1:400 @A3

Drawing Title
Elevations
806 High Road Frontage

Drawing Status
PLANNING

Drawing No Revision
2172_0204 E



EXISTING



PROPOSED

- Notes:
- Do not scale from this drawing; work to figured dimensions only.
 - All information is to be checked on site for accuracy and fit.
 - Report any discrepancies and omissions to RMA Architects.

H&S Notes - "ERIC" (Eliminate, Reduce, Isolate, Control)

- Where RMA services on a project do not include for site inspections and works surveys, RMA do not warrant that 'as built' issue drawings are a complete and accurate record of what has been constructed,
- Unless notified specifically by the responsible party, changes made on site to RMA design information has not been incorporated in this drawing.

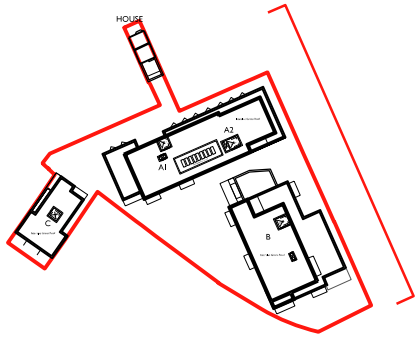
Diagram Key

B	01.08.22	Post Planning Submission	NK	CT
A	19.11.21	Planning Submission	NK	CT
Rev	Date	Description	By	Chkd

RM_A

320C Highgate Studios
53-79 Highgate Road, London, NW5 1TL
020 7284 1414, rmaarchitects.co.uk

Key Plan



Project

806 Leyton High Road

Client

WOOLBRO
GROUP



Scale	Date	By	Checked
1:200 1:400	@A1 @A3	OCT 21	NK CT

Drawing Title

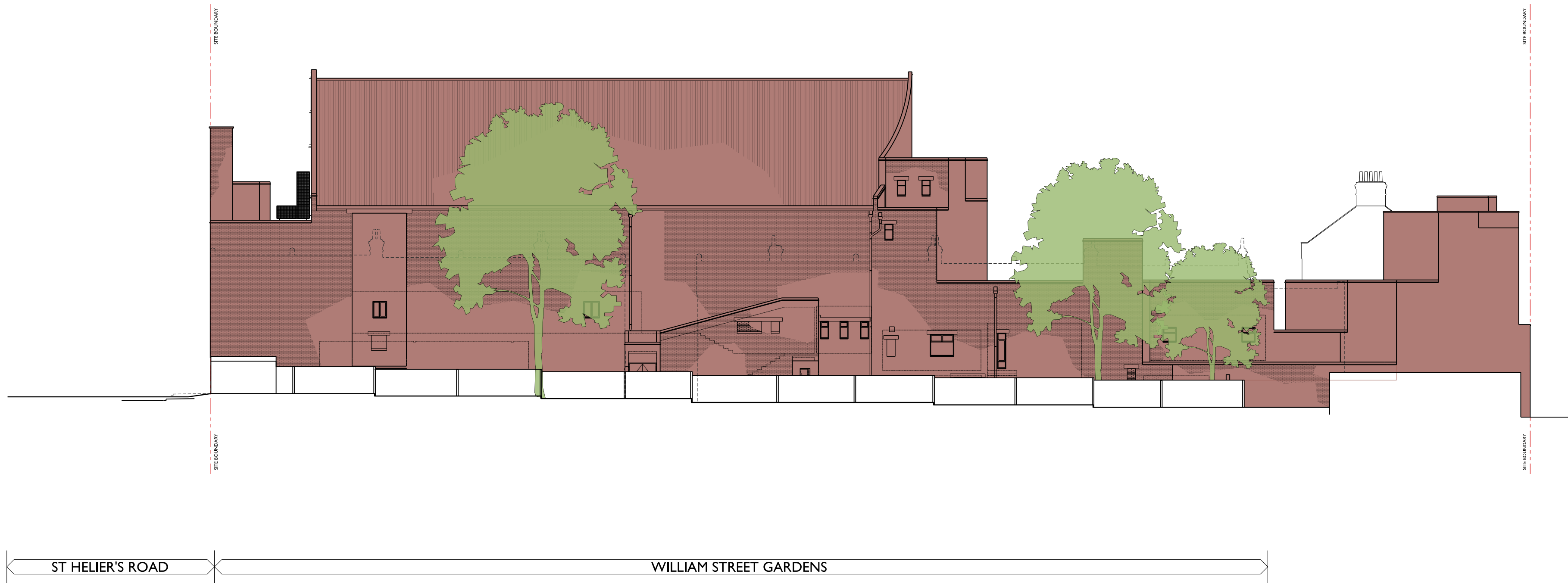
Street Elevations
St Heliers Road

Drawing Status

PLANNING

Drawing No	Revision
2172_0205	B

EXISTING



PROPOSED



- Notes:
- Do not scale from this drawing; work to figured dimensions only.
 - All information is to be checked on site for accuracy and fit.
 - Report any discrepancies and omissions to RMA Architects.

H&S Notes - "ERIC" (Eliminate, Reduce, Isolate, Control)

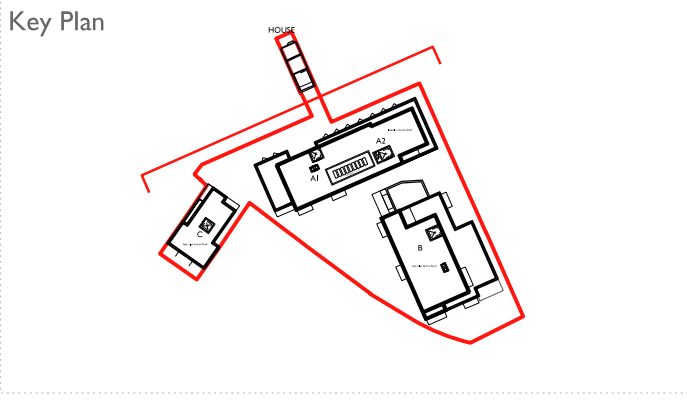
- Where RMA services on a project do not include for site inspections and works surveys, RMA do not warrant that 'as built' issue drawings are a complete and accurate record of what has been constructed,
- Unless notified specifically by the responsible party, changes made on site to RMA design information has not been incorporated in this drawing.

Diagram Key

B	01.08.22	Post Planning Submission	NK	CT
A	19.11.21	Planning Submission	NK	CT
Rev	Date	Description	By	Chkd

RM_A

320C Highgate Studios
53-79 Highgate Road, London, NW5 1TL
020 7284 1414, rmaarchitects.co.uk



Project
806 Leyton High Road

Client

WOOLBRO GROUP

WOOLBRO GROUP

Scale	Date	By	Checked
1:200 1:400 @A1 @A3	OCT 21	NK	CT

Drawing Title
Street Elevations
William Street Gardens

Drawing Status PLANNING	Revision B
Drawing No 2172_0206	

EXISTING

PROPOSED



- Notes:
- Do not scale from this drawing; work to figured dimensions only.
 - All information is to be checked on site for accuracy and fit.
 - Report any discrepancies and omissions to RMA Architects.

H&S Notes - "ERIC" (Eliminate, Reduce, Isolate, Control)

- Where RMA services on a project do not include for site inspections and works surveys, RMA do not warrant that 'as built' issue drawings are a complete and accurate record of what has been constructed,
- Unless notified specifically by the responsible party, changes made on site to RMA design information has not been incorporated in this drawing.

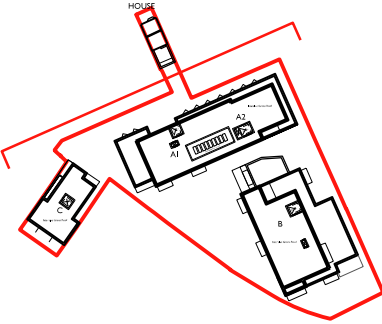
Diagram Key

B	01.08.22	Post Planning Submission	NK	CT
A	19.11.21	Planning Submission	NK	CT
Rev	Date	Description	By	Chkd

RM_A

320C Highgate Studios
53-79 Highgate Road, London, NW5 1TL
020 7284 1414, rmaarchitects.co.uk

Key Plan



Project

806 Leyton High Road

Client

WOOLBRO GROUP



Scale	Date	By	Checked
1:200 1:400	@A1 @A3	OCT 21	NK CT

Drawing Title

Street Elevations
806 High Road

Drawing Status

INFORMATION

Drawing No	Revision
2172_0207	B

- Notes:
- Do not scale from this drawing; work to figured dimensions only.
 - All information is to be checked on site for accuracy and fit.
 - Report any discrepancies and omissions to RMA Architects.

H&S Notes - "ERIC" (Eliminate, Reduce, Isolate, Control)

- Where RMA services on a project do not include for site inspections and works surveys, RMA do not warrant that 'as built' issue drawings are a complete and accurate record of what has been constructed.
- Unless notified specifically by the responsible party, changes made on site to RMA design information has not been incorporated in this drawing.

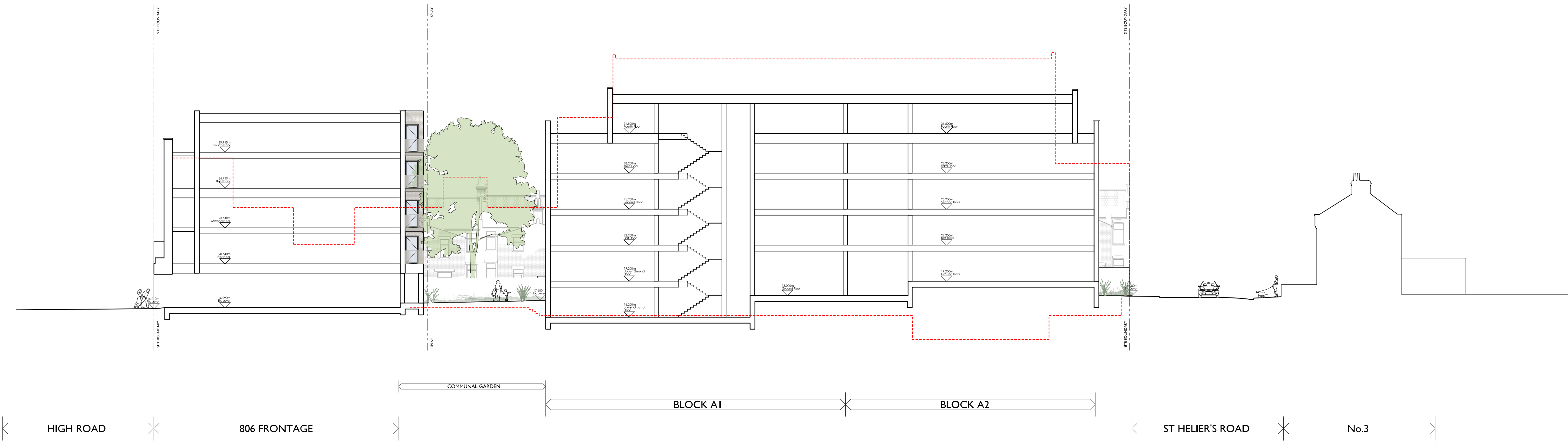
SCALE BAR: 1:200 @A1, 1:400 @A3



Diagram Key

--- Existing cinema outline

SECTION A



SECTION B

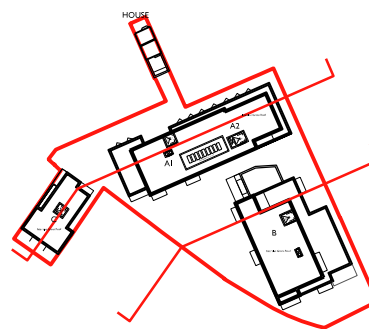


D	01.08.22	Post Planning Submission	NK	CT
C	19.11.21	Planning Submission	NK	CT
Rev	Date	Description	By	Chkd

RM_A

320C Highgate Studios
53-79 Highgate Road, London, NW5 1TL
020 7284 1414, rmaarchitects.co.uk

Key Plan



Project

806 Leyton High Road

Client

WOOLBRO GROUP



Scale	Date	By	Checked
1:200 1:400	@A1 @A3 SEPT 21	NK	CT

Drawing Title

Sections
A and B

Drawing Status

PLANNING

Drawing No
2172_0250

Revision

D

SECTION C



SECTION D



- Notes:
- Do not scale from this drawing; work to figured dimensions only.
 - All information is to be checked on site for accuracy and fit.
 - Report any discrepancies and omissions to RMA Architects.

H&S Notes - "ERIC" (Eliminate, Reduce, Isolate, Control)

- Where RMA services on a project do not include for site inspections and works surveys, RMA do not warrant that 'as built' issue drawings are a complete and accurate record of what has been constructed.
- Unless notified specifically by the responsible party, changes made on site to RMA design information has not been incorporated in this drawing.

SCALE BAR: 1:200 @A1, 1:400 @A3

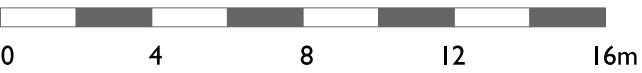


Diagram Key

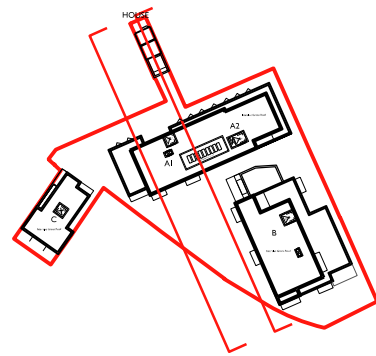
----- Existing cinema outline

D	01.08.22	Post Planning Submission	NK	CT
C	19.11.21	Planning Submission	NK	CT
Rev	Date	Description	By	Chkd

RM_A

320C Highgate Studios
53-79 Highgate Road, London, NW5 1TL
020 7284 1414, rmaarchitects.co.uk

Key Plan



Project

806 Leyton High Road

Client

WOOLBRO GROUP



Scale	Date	By	Checked
1:200 1:400	@A1 @A3	SEPT 21 NK	CT

Drawing Title

Sections
C and D

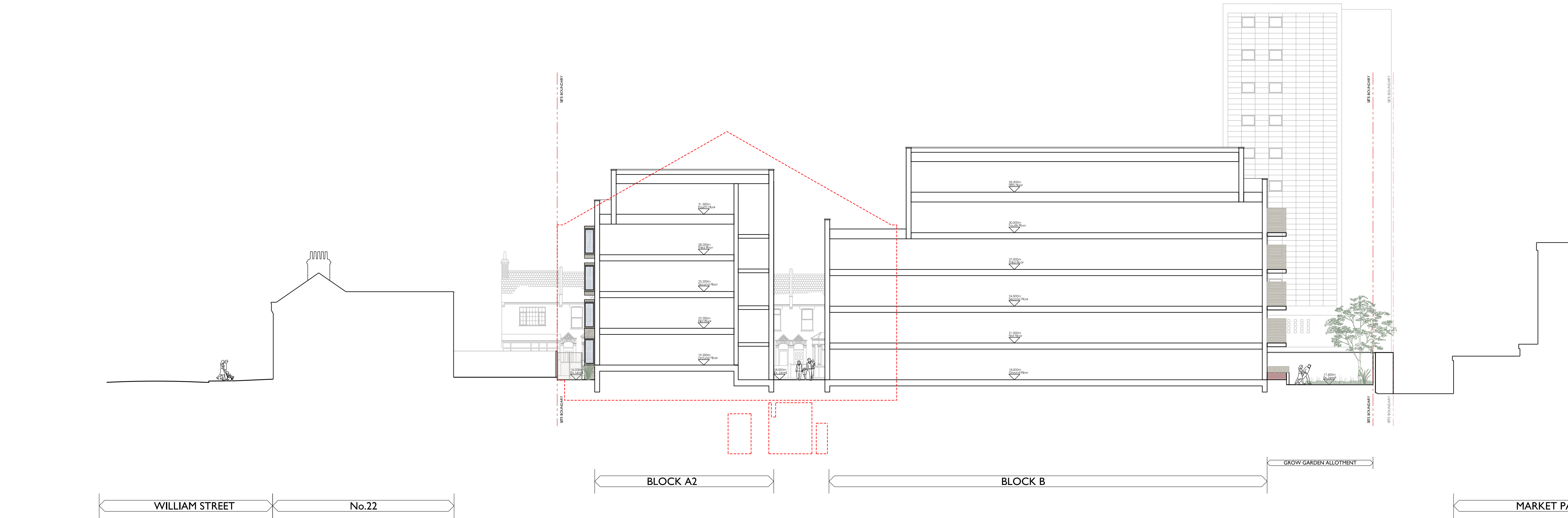
Drawing Status

PLANNING

Drawing No
2172_025 I

Revision

D



SECTION E



SECTION F

- Notes:
- Do not scale from this drawing; work to figured dimensions only.
 - All information is to be checked on site for accuracy and fit.
 - Report any discrepancies and omissions to RMA Architects.

H&S Notes - "ERIC" (Eliminate, Reduce, Isolate, Control)

- Where RMA services on a project do not include for site inspections and works surveys, RMA do not warrant that 'as built' issue drawings are a complete and accurate record of what has been constructed.
- Unless notified specifically by the responsible party, changes made on site to RMA design information has not been incorporated in this drawing.

SCALE BAR: 1:200 @A1, 1:400 @A3

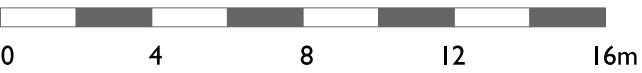


Diagram Key

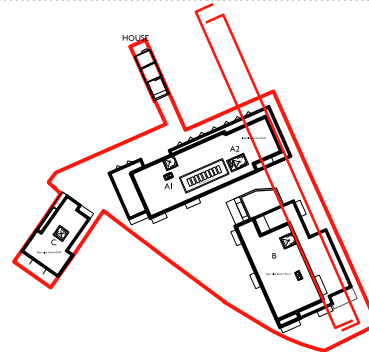
Existing cinema outline

D	01.08.22	Post Planning Submission	NK	CT
C	19.11.21	Planning Submission	NK	CT
Rev	Date	Description	By	Chkd

RM_A

320C Highgate Studios
53-79 Highgate Road, London, NW5 1TL
020 7284 1414, rmaarchitects.co.uk

Key Plan



Project

806 Leyton High Road

Client

WOOLBRO GROUP



Scale	Date	By	Checked
1:200 @A1 1:400 @A3	SEPT 21	NK	CT

Drawing Title

Sections
E and F

Drawing Status

PLANNING

Drawing No
2172_0252

Revision

D



- Notes:
- Do not scale from this drawing; work to figured dimensions only.
 - All information is to be checked on site for accuracy and fit.
 - Report any discrepancies and omissions to RMA Architects.

H&S Notes - "ERIC" (Eliminate, Reduce, Isolate, Control)

- Where RMA services on a project do not include for site inspections and works surveys, RMA do not warrant that 'as built' issue drawings are a complete and accurate record of what has been constructed.
- Unless notified specifically by the responsible party, changes made on site to RMA design information has not been incorporated in this drawing.

SCALE BAR: 1:100 @A3

0 1 2 3 4m

Diagram Key: MATERIALS KEY - ELEVATION

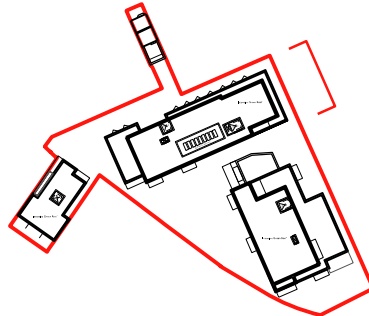
- 01 Brick 01: Light Buff Multi Brickwork in 'Standard Stretcher Bond'
02 Brick 02: Red Multi Brickwork in 'Standard Stretcher Bond'
03 Brick 03: White Brickwork in 'Standard Stretcher Bond'
04 Brick 04: Red Stock Brickwork in 'to match neighbouring houses'
05 Projecting Striped Horizontal Brick Band Detail in Brick 01 (15mm projection)
06 Projecting Striped Horizontal Brick Band Detail in Brick 02 (15mm projection)
07 Projecting Striped Vertical Brick Band Detail in Brick 03 (15mm projection)
08 Projecting Header in Brick 04 (30mm projection)
09 Knitted Brickwork in Brick 01 (flush)
10 Knitted Brickwork in Brick 02 (flush)
11 Knitted Brickwork in Brick 03 (flush)
12 Single Solder Course in Brick 03 (flush)
13 Single Solder Course in Brick 04 (flush)
14 Pre-cast
15 Stone Coping
16 Render to match 806 High Road Frontage
17 Metalwork type 01: light brown/grey
18 Metalwork type 02: pink
19 Metalwork type 03: yellow/gold
20 Balustrade type 01: light brown/grey (to match metalwork 01)
21 Slate Tiles
22 Glass Type 01: full opacity
23 Glass Type 02: frosted
24 Vertical Vent Slot
25 Hit and Miss Brickwork Ventilation

C	01.08.22	Post Planning Submission	NK	CT
B	19.11.21	Planning Submission	NK	CT
Rev	Date	Description	By	Chkd

RM_A

320C Highgate Studios
53-79 Highgate Road, London, NW5 1TL
020 7284 1414, rmaarchitects.co.uk

Key Plan



Project

806 Leyton High Road

Client

WOOLBRO GROUP



Scale	Date	By	Checked
1:100 @ A3	06.10.21	NK	CT

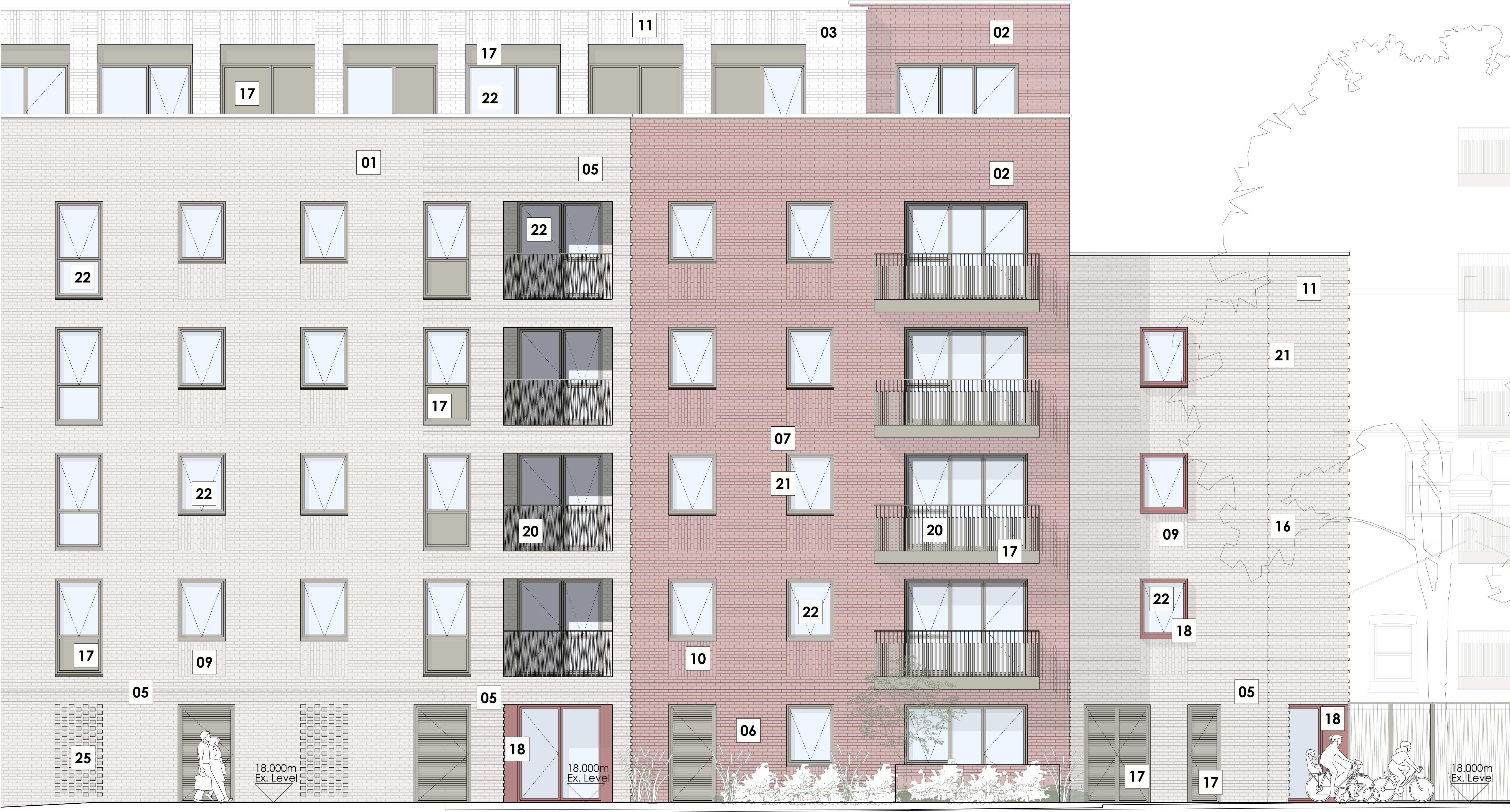
Drawing Title

Detailed Elevation
Page 1
East Elevation
Block A2

Drawing Status

PLANNING

Drawing No	Revision
2172_0300	C



- Notes:
- Do not scale from this drawing; work to figured dimensions only.
 - All information is to be checked on site for accuracy and fit.
 - Report any discrepancies and omissions to RMA Architects.

H&S Notes - "ERIC" (Eliminate, Reduce, Isolate, Control)

- Where RMA services on a project do not include for site inspections and works surveys, RMA do not warrant that 'as built' issue drawings are a complete and accurate record of what has been constructed.
- Unless notified specifically by the responsible party, changes made on site to RMA design information has not been incorporated in this drawing.

SCALE BAR: 1:100 @A3

0 1 2 3 4m

Diagram Key: MATERIALS KEY - ELEVATION

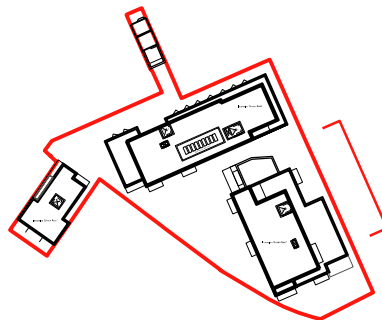
- 01 Brick 01: Light Buff Multi Brickwork in 'Standard Stretcher Bond'
- 02 Brick 02: Red Multi Brickwork in 'Standard Stretcher Bond'
- 03 Brick 03: White Brickwork in 'Standard Stretcher Bond'
- 04 Brick 04: Red Stock Brickwork in 'to match neighbouring houses'
- 05 Projecting Striped Horizontal Brick Band Detail in Brick 01 (15mm projection)
- 06 Projecting Striped Horizontal Brick Band Detail in Brick 02 (15mm projection)
- 07 Projecting Striped Vertical Brick Band Detail in Brick 03 (15mm projection)
- 08 Projecting Header in Brick 04 (30mm projection)
- 09 Knitted Brickwork in Brick 01 (flush)
- 10 Knitted Brickwork in Brick 02 (flush)
- 11 Knitted Brickwork in Brick 03 (flush)
- 12 Single Soldier Course in Brick 03 (flush)
- 13 Single Soldier Course in Brick 04 (flush)
- 14 Pre-cast
- 15 Stone Coping
- 16 Render to match 806 High Road Frontage
- 17 Metalwork type 01: light brown/grey
- 18 Metalwork type 02: pink
- 19 Metalwork type 03: yellow/gold
- 20 Balustrade type 01: light brown/grey (to match metalwork 01)
- 21 Slate Tiles
- 22 Glass Type 01: full opacity
- 23 Glass Type 02: frosted
- 24 Vertical Vent Slot
- 25 Hit and Miss Brickwork Ventilation

C	01.08.22	Post Planning Submission	NK	CT
B	19.11.21	Planning Submission	NK	CT
Rev	Date	Description	By	Chkd

RM_A

320C Highgate Studios
53-79 Highgate Road, London, NW5 1TL
020 7284 1414, rmaarchitects.co.uk

Key Plan



Project

806 Leyton High Road

Client

WOOLBRO GROUP



Scale	Date	By	Checked
1:100 @ A3	06.10.21	NK	CT

Drawing Title

Detailed Elevation
Page 2
East Elevation
Block B

Drawing Status

PLANNING

Drawing No	Revision
2172_0301	C

Notes:

- Do not scale from this drawing; work to figured dimensions only.
- All information is to be checked on site for accuracy and fit.
- Report any discrepancies and omissions to RMA Architects.

H&S Notes - "ERIC" (Eliminate, Reduce, Isolate, Control)

- Where RMA services on a project do not include for site inspections and works surveys, RMA do not warrant that 'as built' issue drawings are a complete and accurate record of what has been constructed.
- Unless notified specifically by the responsible party, changes made on site to RMA design information has not been incorporated in this drawing.

SCALE BAR: 1:100 @A3

0 1 2 3 4m

Diagram Key: MATERIALS KEY - ELEVATION

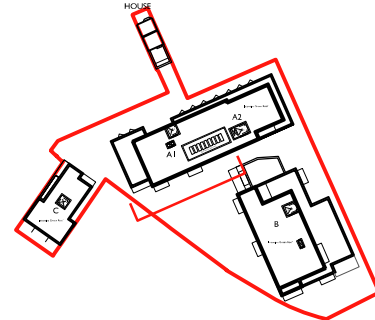
- Brick 01: Light Buff Multi Brickwork in 'Standard Stretcher Bond'
- Brick 02: Red Multi Brickwork in 'Standard Stretcher Bond'
- Brick 03: White Brickwork in 'Standard Stretcher Bond'
- Brick 04: Red Stock Brickwork in 'to match neighbouring houses'
- Projecting Striped Horizontal Brick Band Detail in Brick 01 (15mm projection)
- Projecting Striped Horizontal Brick Band Detail in Brick 02 (15mm projection)
- Projecting Striped Vertical Brick Band Detail in Brick 03 (15mm projection)
- Projecting Header in Brick 04 (30mm projection)
- Knitted Brickwork in Brick 01 (flush)
- Knitted Brickwork in Brick 02 (flush)
- Knitted Brickwork in Brick 03 (flush)
- Single Soldier Course in Brick 03 (flush)
- Single Soldier Course in Brick 04 (flush)
- Pre-cast
- Stone Coping
- Render to match 806 High Road Frontage
- Metalwork type 01: light brown/grey
- Metalwork type 02: pink
- Metalwork type 03: yellow/gold
- Balustrade type 01: light brown/grey (to match metalwork 01)
- Slate Tiles
- Glass Type 01: full opacity
- Glass Type 02: frosted
- Vertical Vent Slot
- Hit and Miss Brickwork Ventilation

C	01.08.22	Post Planning Submission	NK	CT
B	19.11.21	Planning Submission	NK	CT
Rev	Date	Description	By	Chkd

RM_A

320C Highgate Studios
53-79 Highgate Road, London, NW5 1TL
020 7284 1414, rmaarchitects.co.uk

Key Plan



Project

806 Leyton High Road

Client

WOOLBRO GROUP



Scale	Date	By	Checked
1:100 @ A3	19.10.21	NK	CT

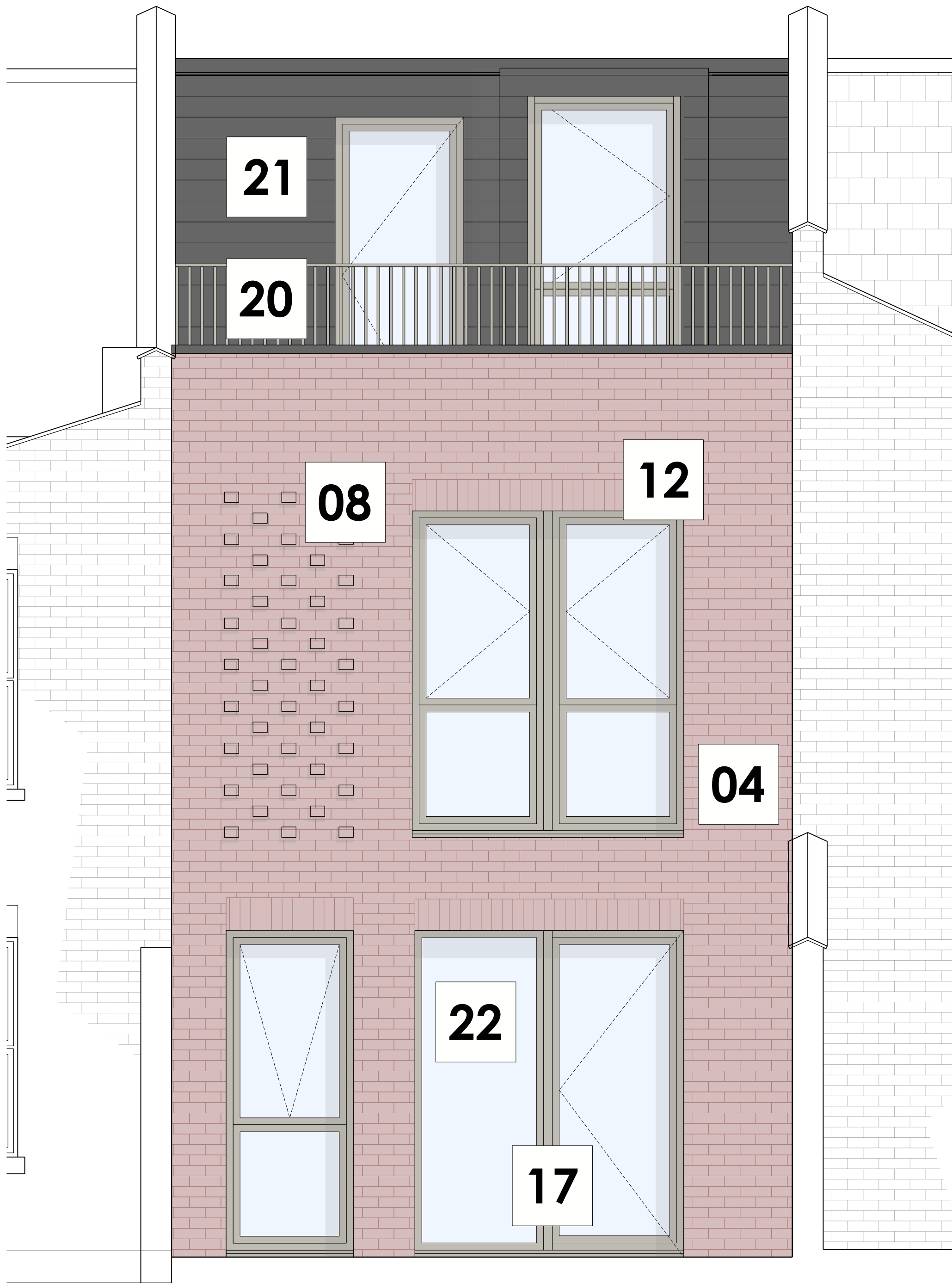
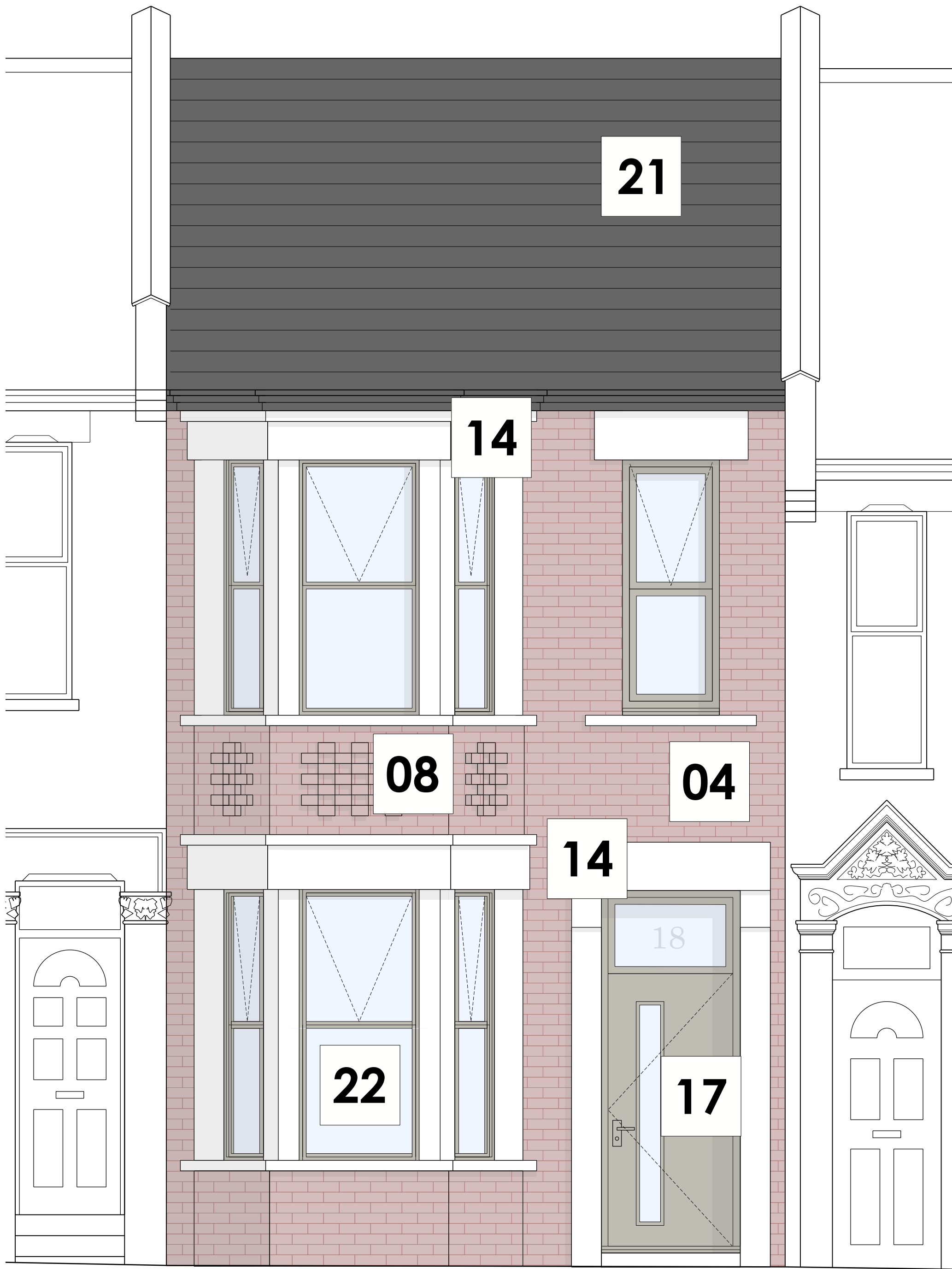
Drawing Title

Detailed Elevation
Page 3
South Elevation
Block A1

Drawing Status

PLANNING

Drawing No	Revision
2172_0302	C



- Notes:
- Do not scale from this drawing; work to figured dimensions only.
 - All information is to be checked on site for accuracy and fit.
 - Report any discrepancies and omissions to RMA Architects.

H&S Notes - "ERIC" (Eliminate, Reduce, Isolate, Control)

- Where RMA services on a project do not include for site inspections and works surveys, RMA do not warrant that 'as built' issue drawings are a complete and accurate record of what has been constructed.
- Unless notified specifically by the responsible party, changes made on site to RMA design information has not been incorporated in this drawing.

SCALE BAR: 1:50 @A3

0 1 2m

Diagram Key: MATERIALS KEY - ELEVATION

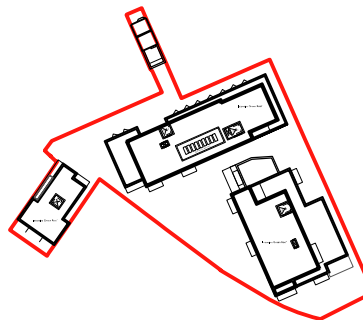
- Brick 01: Light Buff Multi Brickwork in 'Standard Stretcher Bond'
- Brick 02: Red Multi Brickwork in 'Standard Stretcher Bond'
- Brick 03: White Brickwork in 'Standard Stretcher Bond'
- Brick 04: Red Stock Brickwork in 'to match neighbouring houses'
- Projecting Striped Horizontal Brick Band Detail in Brick 01 (15mm projection)
- Projecting Striped Horizontal Brick Band Detail in Brick 02 (15mm projection)
- Projecting Striped Vertical Brick Band Detail in Brick 03 (15mm projection)
- Projecting Header in Brick 04 (30mm projection)
- Knitted Brickwork in Brick 01 (flush)
- Knitted Brickwork in Brick 02 (flush)
- Knitted Brickwork in Brick 03 (flush)
- Single Soldier Course in Brick 03 (flush)
- Single Soldier Course in Brick 04 (flush)
- Pre-cast
- Stone Coping
- Render to match 806 High Road Frontage
- Metalwork type 01: light brown/grey
- Metalwork type 02: pink
- Metalwork type 03: yellow/gold
- Balustrade type 01: light brown/grey (to match metalwork 01)
- Slate Tiles
- Glass Type 01: full opacity
- Glass Type 02: frosted
- Vertical Vent Slot
- Hit and Miss Brickwork Ventilation

B	XX.06.22	Post Planning Submission	NK	CT
A	19.11.21	Planning Submission	NK	CT
Rev	Date	Description	By	Chkd

RM_A

320C Highgate Studios
53-79 Highgate Road, London, NW5 1TL
020 7284 1414, rmaarchitects.co.uk

Key Plan



Project

806 Leyton High Road

Client

WOOLBRO GROUP



Scale	Date	By	Checked
1:50 @ A3	19.10.21	NK	CT

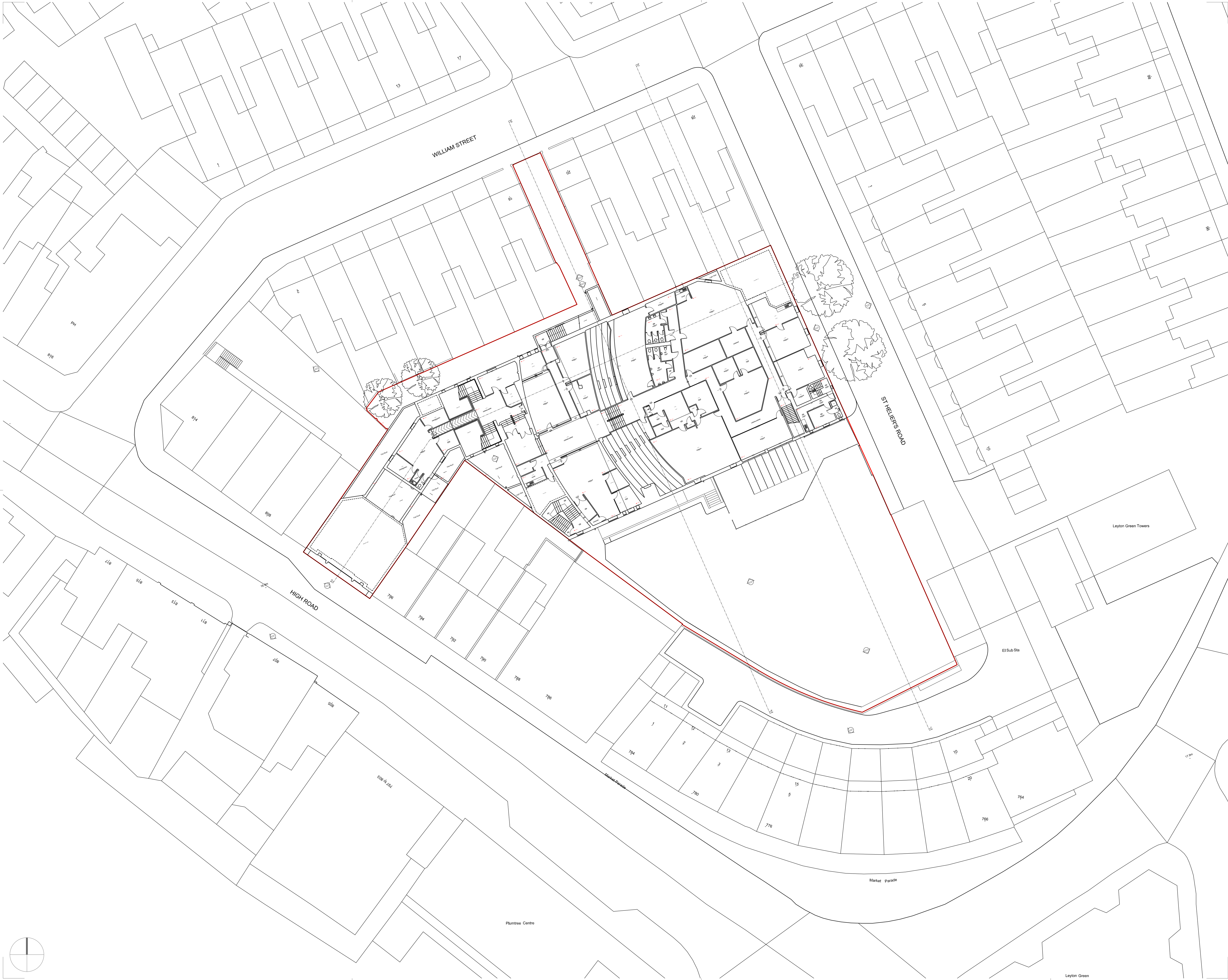
Drawing Title

Detailed Elevation
Page 5
House Elevations

Drawing Status

PLANNING

Drawing No	Revision
2172_0304	B



- Notes:
- Do not scale from this drawing; work to figured dimensions only.
 - All information is to be checked on site for accuracy and fit.
 - Report any discrepancies and omissions to RMA Architects.

H&S Notes - "ERIC" (Eliminate, Reduce, Isolate, Control)

- Where RMA services on a project do not include for site inspections and works surveys, RMA do not warrant that 'as built' issue drawings are a complete and accurate record of what has been constructed.
- Unless notified specifically by the responsible party, changes made on site to RMA design information has not been incorporated in this drawing.

SCALE BAR: 1:250 @A1, 1:500 @A3

0 05 10 15 20m

Diagram Key

Rev	Date	Description	By	Chkd
A	19.11.21	Planning Submission	NK	CT

RM_A

320C Highgate Studios
53-79 Highgate Road, London, NW5 1TL
020 7284 1414, rmaarchitects.co.uk

Key Plan

Project
806 Leyton High Road

Client
WOOLBRO GROUP



Scale	Date	By	Checked
1:250 @A1 1:500 @A3	SEPT 21	NK	CT

Drawing Title
**Site Plan
Existing Site Survey
First Floor**

Drawing Status	Revision
PLANNING	A
Drawing No 2172_0003	



- Notes:
- Do not scale from this drawing; work to figured dimensions only.
 - All information is to be checked on site for accuracy and fit.
 - Report any discrepancies and omissions to RMA Architects.

H&S Notes - "ERIC" (Eliminate, Reduce, Isolate, Control)

- Where RMA services on a project do not include for site inspections and works surveys, RMA do not warrant that 'as built' issue drawings are a complete and accurate record of what has been constructed.
- Unless notified specifically by the responsible party, changes made on site to RMA design information has not been incorporated in this drawing.

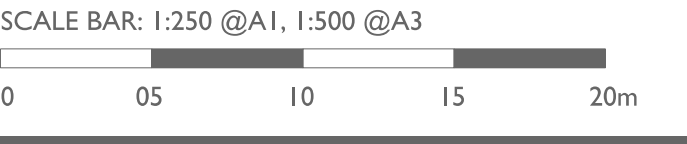


Diagram Key


A	19.11.21	Planning Submission	NK	CT
Rev	Date	Description	By	Chkd

RM_A

320C Highgate Studios
53-79 Highgate Road, London, NW5 1TL
020 7284 1414, rmaarchitects.co.uk

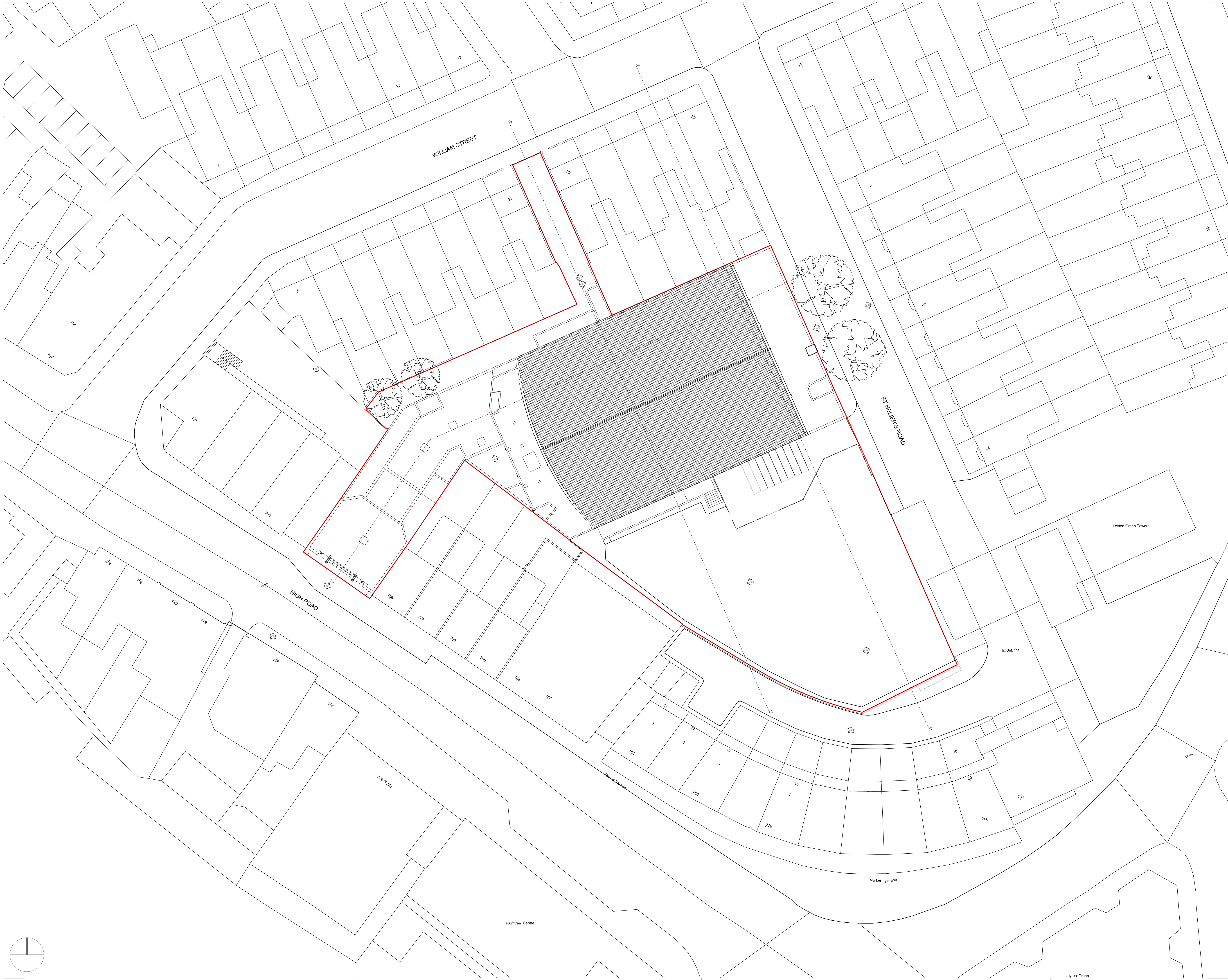
Key Plan

Project
806 Leyton High Road

Client			
WOOLBRO GROUP			
Scale	Date	By	Checked
1:250 @A1	SEPT 21	NK	CT
1:500 @A3			

Drawing Title
Site Plan
Existing Site Survey
Ground Floor

Drawing Status PLANNING	
Drawing No 2172_0002	Revision A



- Notes:
- Do not scale from this drawing; work to figured dimensions only.
 - All information is to be checked on site for accuracy and fit.
 - Report any discrepancies and omissions to RMA Architects.

H&S Notes - "ERIC" (Eliminate, Reduce, Isolate, Control)

- Where RMA services on a project do not include for site inspections and works surveys, RMA do not warrant that 'as built' issue drawings are a complete and accurate record of what has been constructed.
- Unless notified specifically by the responsible party, changes made on site to RMA design information has not been incorporated in this drawing.

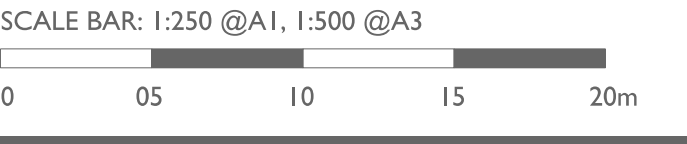


Diagram Key

A	19.11.21	Planning Submission	NK	CT
Rev	Date	Description	By	Chkd

RM_A

320C Highgate Studios
53-79 Highgate Road, London, NW5 1TL
020 7284 1414, rmaarchitects.co.uk

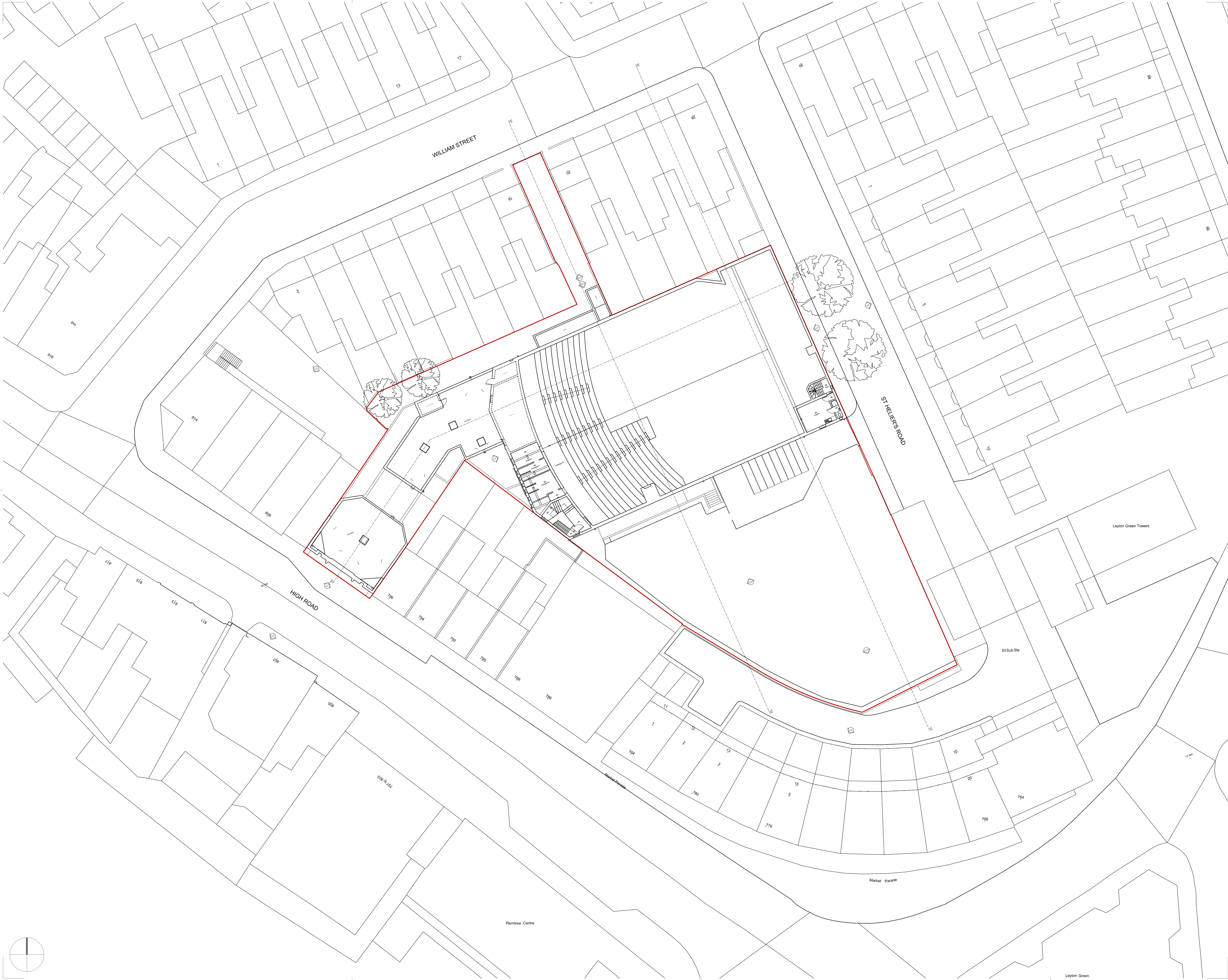
Key Plan

Project
806 Leyton High Road

Client			
WOOLBRO GROUP			
Scale	Date	By	Checked
1:250 @A1	SEPT 21	NK	CT
1:500 @A3			
Drawing Title			

Site Plan
Existing Site Survey
Roof Plan

Drawing Status	
PLANNING	
Drawing No	Revision
2172_0007	A



- Notes:
- Do not scale from this drawing; work to figured dimensions only.
 - All information is to be checked on site for accuracy and fit.
 - Report any discrepancies and omissions to RMA Architects.

H&S Notes - "ERIC" (Eliminate, Reduce, Isolate, Control)

- Where RMA services on a project do not include for site inspections and works surveys, RMA do not warrant that 'as built' issue drawings are a complete and accurate record of what has been constructed.
- Unless notified specifically by the responsible party, changes made on site to RMA design information has not been incorporated in this drawing.

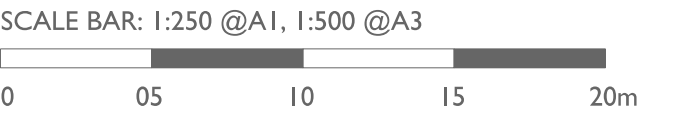


Diagram Key

Rev	Date	Description	By	Chkd
A	19.11.21	Planning Submission	NK	CT

RM_A

320C Highgate Studios
53-79 Highgate Road, London, NW5 1TL
020 7284 1414, rmaarchitects.co.uk

Key Plan

Project
806 Leyton High Road

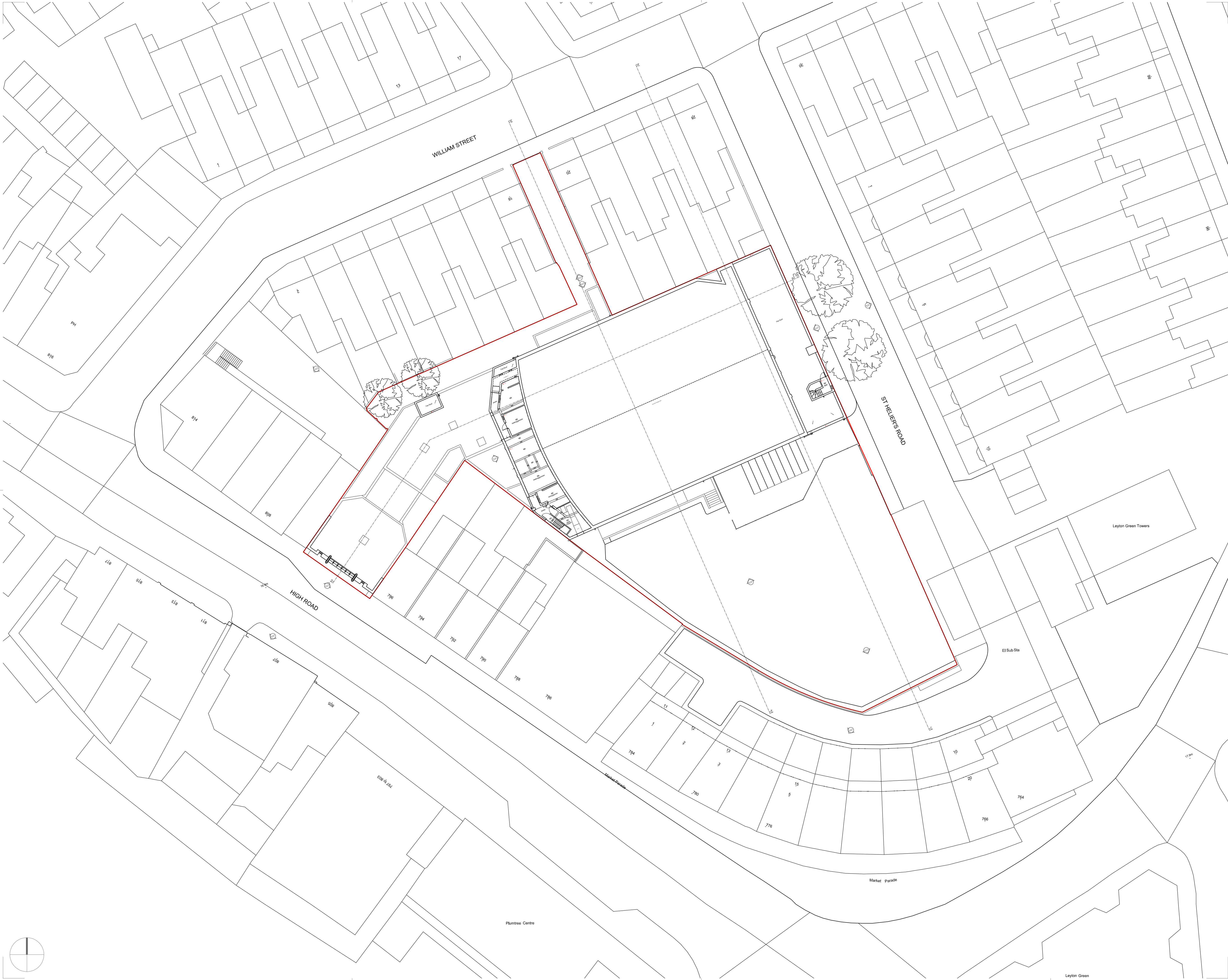
Client

WOOLBRO GROUP

Scale	Date	By	Checked
1:250 @A1 1:500 @A3	SEPT 21	NK	CT

Drawing Title
**Site Plan
Existing Site Survey
Second Floor**

Drawing Status	Revision
PLANNING	
Drawing No 2172_0004	Revision A



- Notes:
- Do not scale from this drawing; work to figured dimensions only.
 - All information is to be checked on site for accuracy and fit.
 - Report any discrepancies and omissions to RMA Architects.

H&S Notes - "ERIC" (Eliminate, Reduce, Isolate, Control)

- Where RMA services on a project do not include for site inspections and works surveys, RMA do not warrant that 'as built' issue drawings are a complete and accurate record of what has been constructed.
- Unless notified specifically by the responsible party, changes made on site to RMA design information has not been incorporated in this drawing.

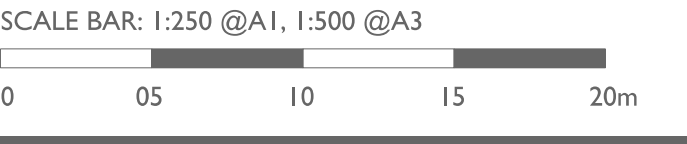


Diagram Key

Rev	Date	Description	By	Chkd
A	19.11.21	Planning Submission	NK	CT

RM_A
320C Highgate Studios
53-79 Highgate Road, London, NW5 1TL
020 7284 1414, rmaarchitects.co.uk

Key Plan

Project
806 Leyton High Road

Client
WOOLBRO GROUP

Scale	Date	By	Checked
1:250 @A1 1:500 @A3	SEPT 21	NK	CT

Drawing Title
**Site Plan
Existing Site Survey
Third Floor**

Drawing Status
PLANNING

Drawing No	Revision
2172_0005	A