

# **Sustainable Consumption and Production Programmes Update**

**21<sup>st</sup> January 2026**

# ONE TONNE CHALLENGE 2025 | Mission Accomplished!

- Over 3.7 Tonnes of Litter Removed Across 96 Neighbourhoods
- Hundreds of Volunteers and Community Groups Took Action including Keep Manchester Tidy, Local Authorities and Partners

**Thomas Morgan, who challenged the region, said:**

“To everyone who took part thank you. 3.8 tonnes of rubbish collected is amazing and goes to show what teamwork can do. Liverpool Combined Authority can you do better or will it always be 1 nil to Great Manchester. Let's save the world one recycling item at a time!”



# Eco Refill Shops Programme

<https://gmgreencity.com/projects-and-campaigns/school-eco-refill-programme/>

# Programme Overview/Objectives



## **Empowering Pupils:**

Pupil-run refill shops reduce single-use plastics, build real-life skills, fosters responsibility and community pride.



## **Reducing Plastic Waste:**

Refill shops reduce single-use plastic waste, supporting circular economy principles within schools.



## **Life Skills Development:**

Teaches financial literacy, marketing, and customer service to prepare pupils for future jobs.



## **Impact:**

Leads to lasting changes across the community and beyond.

---

*“By empowering students to take the lead in shaping their school’s future, it reinforces the idea that small actions lead to meaningful change.”*

together  
we are

**GREATER  
MANCHESTER**

# Programme Status – Eco Refill Shops

- Round 1 launched Jan 2024 - 10 shops
- Round 2 - 15 new shops launched Jan 2025.
- Round 3 – 21 new schools – (launches scheduled Jan 2026).

*Funding support from GMCA, Salford Council, Rochdale Council, Suez Recycling and Recovery UK, Next Energy, Stockport iCan.*



# Progress and coverage

## Year 1/2 highlights:

- 45 schools engaged
- 3300+ containers saved from waste
- Confidence & social skills gained
- More than half of the schools are in the most deprived neighbourhoods in England

LA	Schools funded over 3 years
Bolton	5
Bury	2
Manchester	7
Oldham	2
Rochdale	6
Salford	9
Stockport	4
Trafford	5
Tameside	2
Wigan	3
<b>TOTAL:</b>	<b>45</b>

*“The shop has raised awareness of sustainability issues and encouraged a change in behaviour amongst stakeholders.”*



# ECO Refill Shops in 21 GMCA Schools

Full year impact Wave one 2024, and Wave two 2025

**289**

children leading  
a Refill  
Revolution

**18,911+**

people  
discovering the  
power of re-use

**148+**

openings with  
sustainable  
household products

**3,359+**

plastic  
containers saved  
from waste



**Pupils Profit**

Enterprise based PSHE learning

**Investing in Tomorrow's Environmental Leaders**

# Case Study: D.A.R.E: – Dukesgate Academy Refill Emporium

*“In a world where every action matters, five remarkable Year 6 students have taken the initiative to lead by example.*

*Their Eco Shop, ‘D.A.R.E.’ is more than just a project; it’s a movement fuelled by passion and determination.... a testament to what young minds can achieve when driven by passion and responsibility.”*

**Sarah Ellis, Assistant SENCO and DSL at Dukesgate Academy, Salford**





# Key Highlights

- **Student-led enterprise:** Five Year 6 pupils launched D.A.R.E. to reduce plastic waste and promote sustainability.
- **Impact:** Significant diversion of plastic bottles from landfill; raised awareness across the school community.
- **Empowerment:** Students reported increased confidence, purpose, and leadership skills.
- **Recognition:** Presented their journey at Oxford University to 100+ peers, teachers, and United Learning representatives.



# Future Vision

- Dedicated community hub in a repurposed shipping container in an unused area of the staff car park.
- Eco Shop, Clothes Bank, Community Café, and Food Bank under one roof.
- A welcoming space for sustainability, inclusivity - where people can come together, share resources, and support one another.

*“With leaders like these paving the way, the future of sustainability is bright - not just within the school but for the entire community.”*

***Sarah Ellis, Assistant SENCO and DSL  
at Dukesgate Academy, Salford***

# Eco Grants for Schools Programme

<https://gmgreencity.com/projects-and-campaigns/eco-grants-for-schools-projects-2024-2025/>

# Programme Overview: Eco Grants

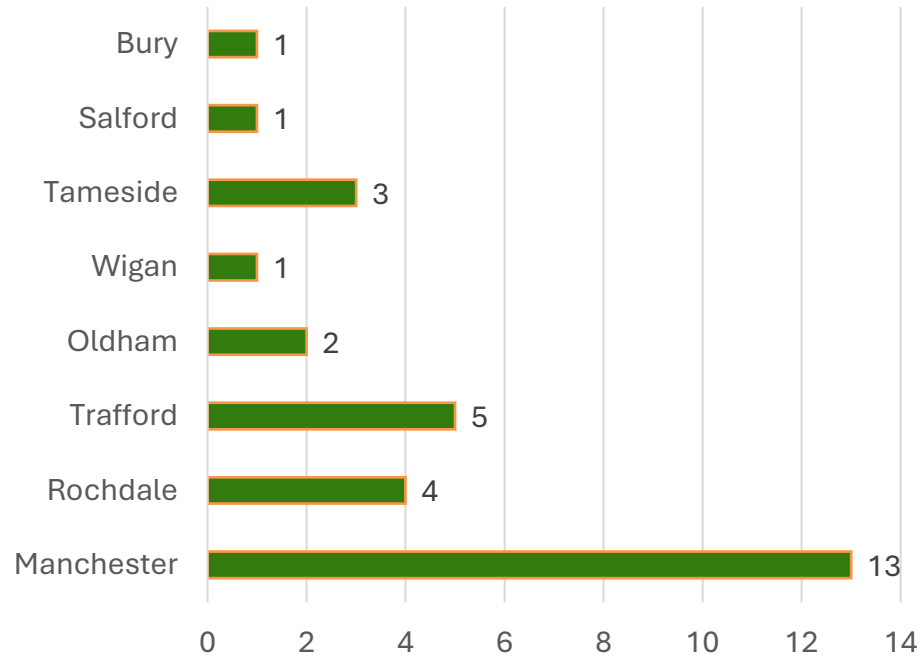
- **£2000 Grants:** Micro-grants to kick-start school and pupil-led sustainability projects → Waste Reduction & Circular Economy, Climate Education, Food
- Programme develops **practical skills** and aligns with Greater Manchester's **environmental goals**.
- Projects include school growing hubs, sustainable food education, waste reduction, improved recycling facilities and composting, and circular economy initiatives – uniform swap shops, reimaging plastic waste.





# Round 1

- 59 applications → 29 awards  
in first wave → £53,382.83



# Round 2

## TIMELINE

Applications Closed	19 Dec 2025
Assessment	Jan–Feb 2026
Awards Announced	March 2026
Documentation & Onboarding	March–Apr 2026



together  
we are

GREATER  
MANCHESTER

ECO GRANTS  
FOR SCHOOLS  
ARE OPEN NOW

Schools can apply now for up to  
£2,000 in funding

More Information

[www.GMGreenCity.com](http://www.GMGreenCity.com)

GMCA

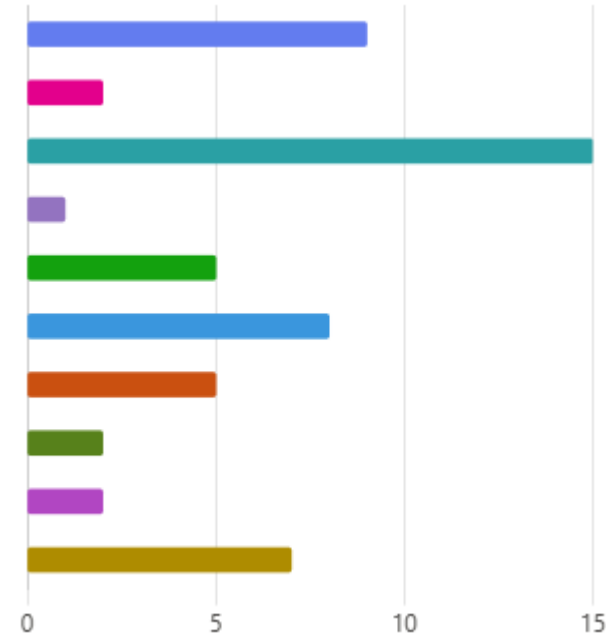
GREATER MANCHESTER  
COMBINED AUTHORITY

# Round 2: Applications - LA / Academy Trust

Local Education Authority control 26  
An Academy Trust 30



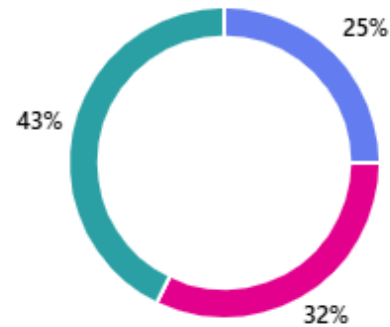
Bolton 9  
Bury 2  
Manchester 15  
Oldham 1  
Rochdale 5  
Salford 8  
Stockport 5  
Tameside 2  
Trafford 2  
Wigan 7



# Round 2: Applications by type / category

● Special Educational Need Establishment	4
● Nursery	0
● Primary School	38
● Secondary School	9
● Further Education College	0
● Pupil Referral Unit	0
● Other	5

● Waste reduction and circular economy - Fashion, Textiles or Plastics	14
● Education on sustainable lifestyles	18
● Sustainable food and tackling food waste	24





# Case Study: Field to Fork

## Whalley Range 11-18 High School

- Transformed unused space into a thriving school garden with fresh produce.
- Students gained practical green skills and sustainability knowledge - Reducing Food Miles and Tackling Food Waste Through Action
- Creative Upcycling: Recycled materials became garden features, unavoidable food waste turned into compost
- Strengthened cross-curricular collaboration on environmental learning
- Built a legacy: A permanent growing area for future cohorts





## **BEFORE**

Outdoor area  
the school  
wanted to  
transform into  
a growing area





## AFTER

Outdoor area as it looks now.

There are windows to the school corridors on each side or the garden and students and staff have commented on the plants growing there and how the space has improved.



# Future Plans

- Skills and knowledge passed on from one group of students to the next
- Cooking activities using their own harvest to allow students to share their learning with families
- Greenhouse expansion to grow stronger and healthier seedlings
- Rainwater collection and irrigation systems
- Develop local partnerships to improve knowledge –  
Local Garden Centre, Urban Diggers





# Next Steps

“Together, we can scale impact and inspire the next generation of changemakers.”



✓ Continue delivering programmes and tailored support for schools



✓ Showcase and amplify case studies – share success stories with partners and wider stakeholders



✓ Unlock co-funding opportunities to scale impact



✓ Build on and align sustainability programmes with school climate action plans



# Climate Awareness – Sustainable Lifestyles Framework

January 2026

# What the Framework Provides

A clear 3-level pathway for climate understanding across GM

1

- **Level 1: Introductory Awareness** - An engaging game to spark interest and action.

2

- **Level 2: Refreshed Climate Awareness e-module** offering deeper insights into climate science, impacts and practical actions.

3

- **Level 3: Carbon Literacy training**, accredited learning to build deeper understanding and support informed climate decision-making.



# BEE THE CHANGE

Game for a greener Greater Manchester

START GAME



# Features and Benefits



**Mini-Games:** Three quick games (6 mins each) introducing key sustainability actions.



**Themes:** Waste reduction, repair & reuse, low-carbon (e.g., heating & insulation) nature-friendly gardens, and active travel.



**Quick Learning:** Designed for busy staff /people - short, impactful, and easy to fit in.



**Engagement:** Sparks conversations and builds momentum for action.





## Name your bee



Bee



For data privacy reasons,  
this information will not be stored.

**Submit**



**Choose your borough**



**Salford**

Bee-lievers

**Choose this borough**



# Leaderboard

1		<b>Bolton Buzzers</b>	595
2		<b>Salford Bee-lievers</b>	280
3		<b>Bury Buzz Bolts</b>	205
4		<b>Manchester Field Foragers</b>	156
5		<b>Rochdale Nectar Racers</b>	129
6		<b>Tameside Hive Flyers</b>	82
7		<b>Trafford Pollen Pilots</b>	65
8		<b>Wigan Wing Whizzers</b>	26
9		<b>Oldham Colony Keepers</b>	25
10		<b>Stockport Honeycombers</b>	4



**Welcome to  
the borough  
leaderboard!**

**Earn points in  
each game to  
help your  
borough fly  
to the top.**

Looker Studio

**Continue**





0



# BEE THE CHANGE

Game for a greener Greater Manchester

Hive and Seek

PLAY

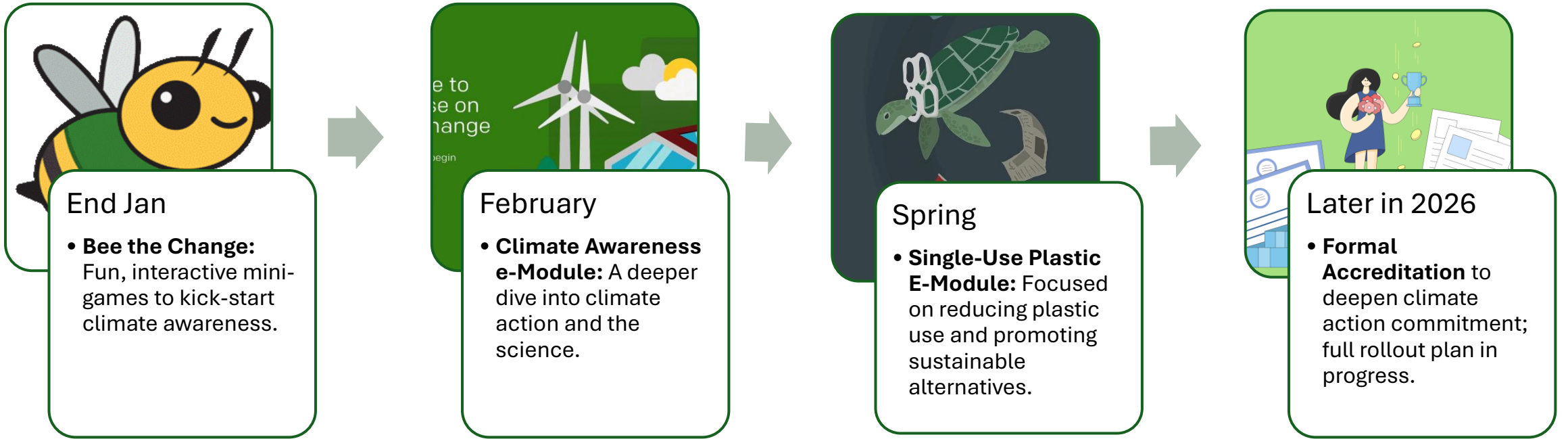
Buzzworthy Builds

Coming soon

Beeing Smart About Travel

Coming soon

# Timeline





# Resources



## **ACCESSIBLE DIGITAL RESOURCES:**

All tools available via gm green city website. Climate awareness e-module built in rise storyline – can be shared.



## **COMMUNICATION SUPPORT ASSETS:**

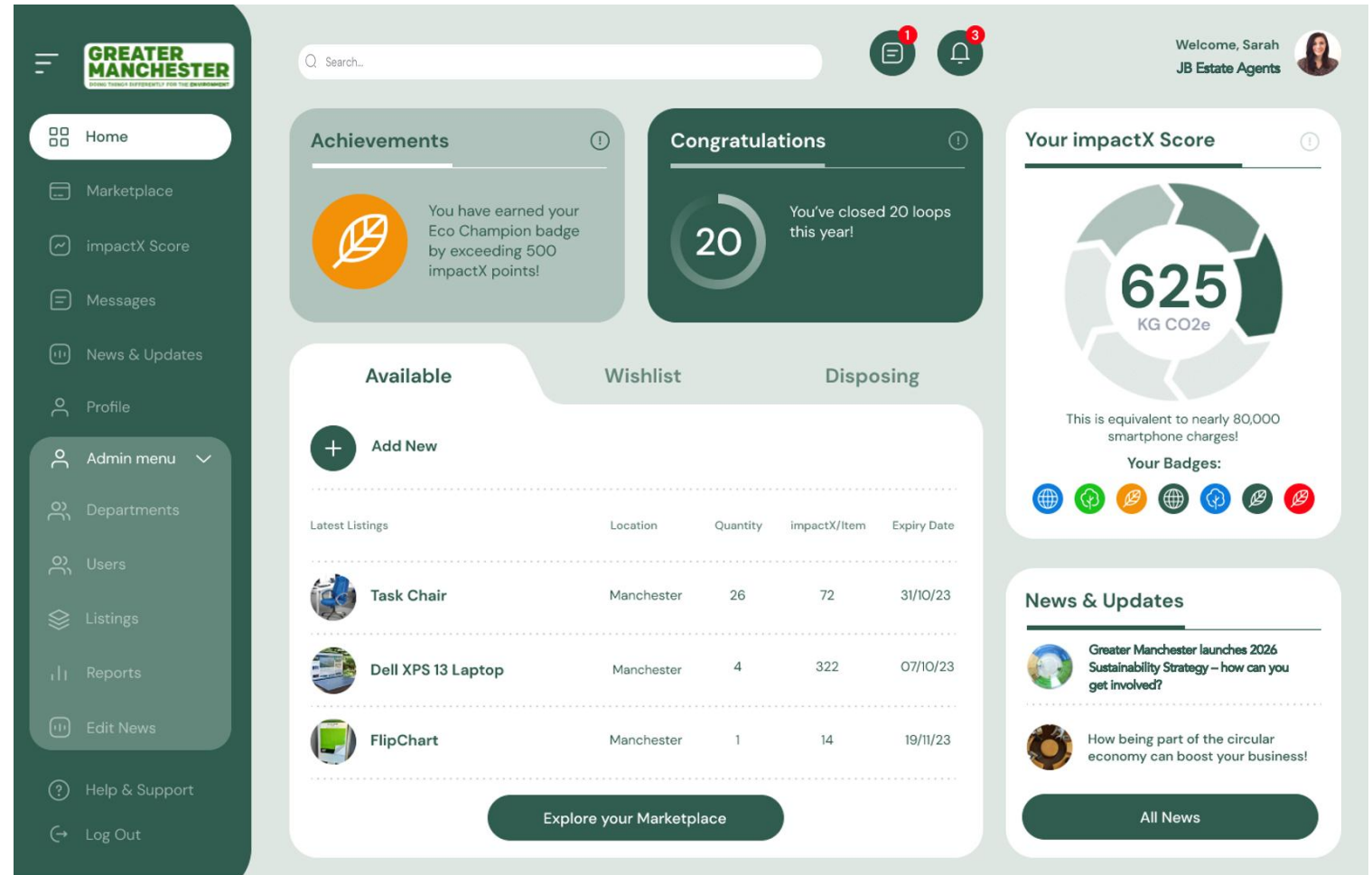
Promotional copy and graphics will be provided to assist engagement.

# Bee Green GM

# Business Asset Reuse Platform - BeeGreenGM

## How It Works

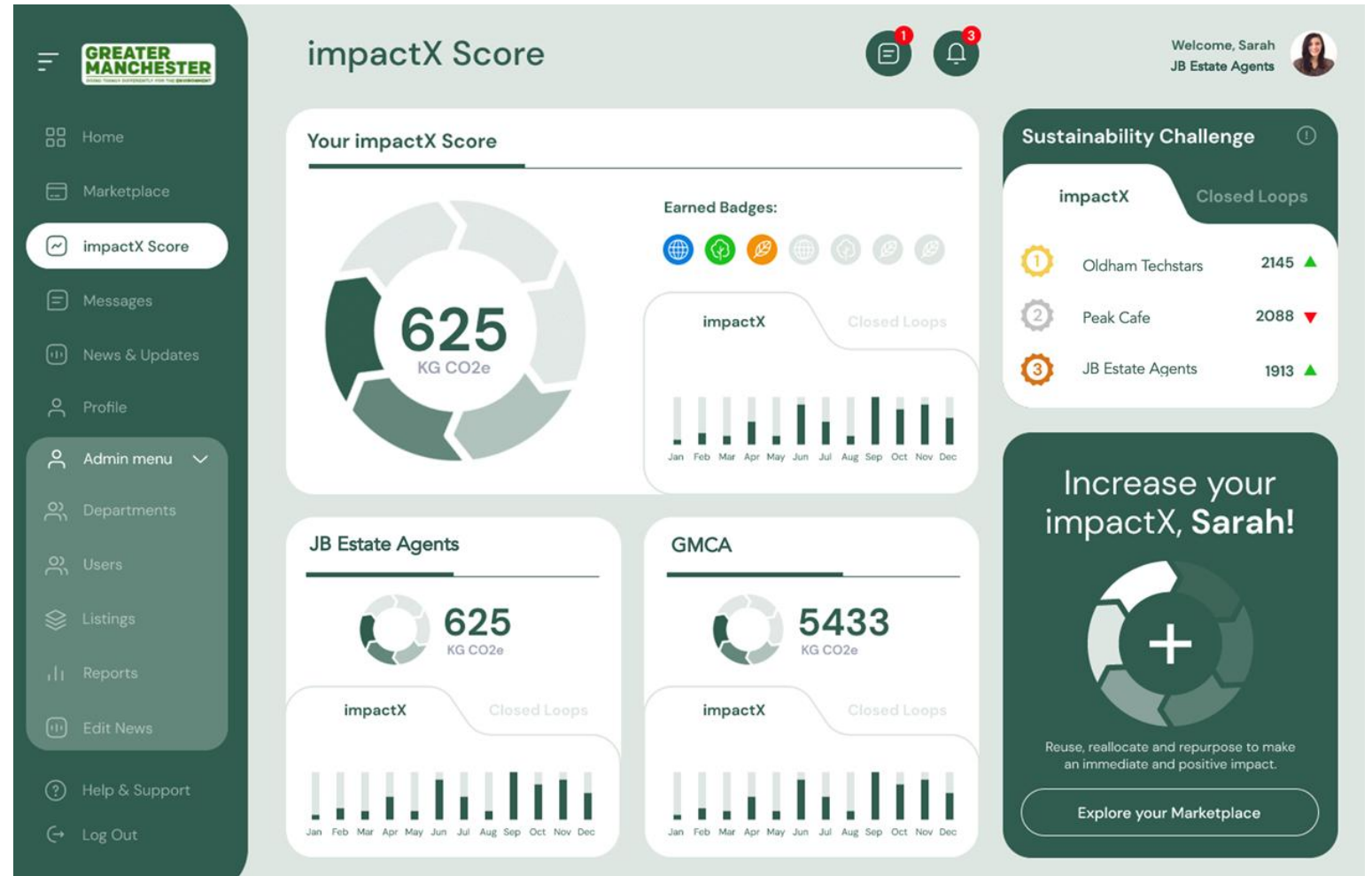
- List what you no longer need – furniture, equipment, supplies
- Browse what others are offering – find items you can reuse
- Claim and repurpose – give assets a second life
- Track your impact – see how much carbon you've saved with your impactX





# Sustainability You Can Measure

- Uses smart carbon models and data analytics to give you an impactX Score, a simple way to show how much carbon you've saved by reusing, repurposing, or reallocating assets.
- Track progress by team, organisation, or across the city-region.



# Thank you

[www.GMGreenCity.com](http://www.GMGreenCity.com)

Bolton	Manchester	Rochdale	Stockport	Trafford
Bury	Oldham	Salford	Tameside	Wigan

---

together  
we are

**GREATER  
MANCHESTER**