


**Enhancing
Life** through  
Water  



Greater Manchester's Integrated Water Management Plan

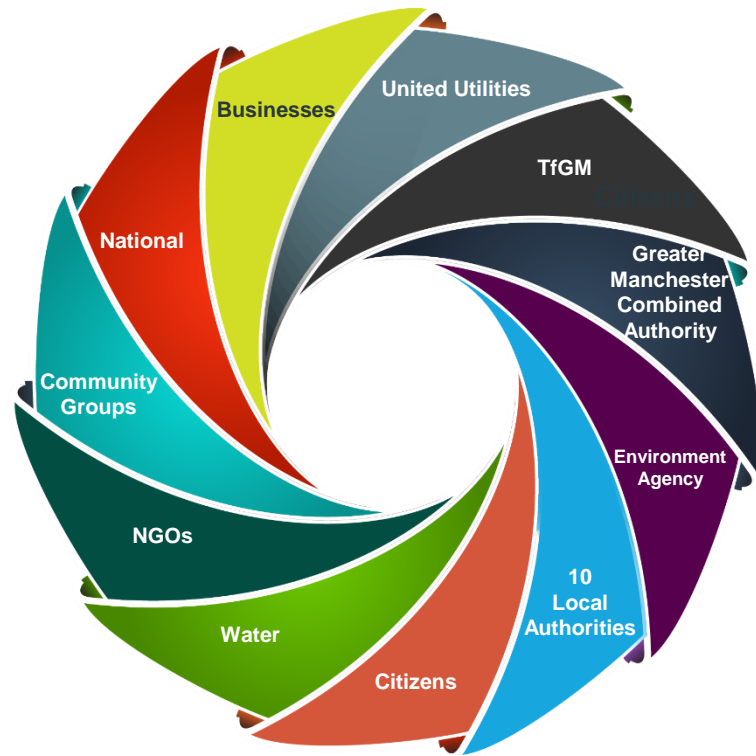
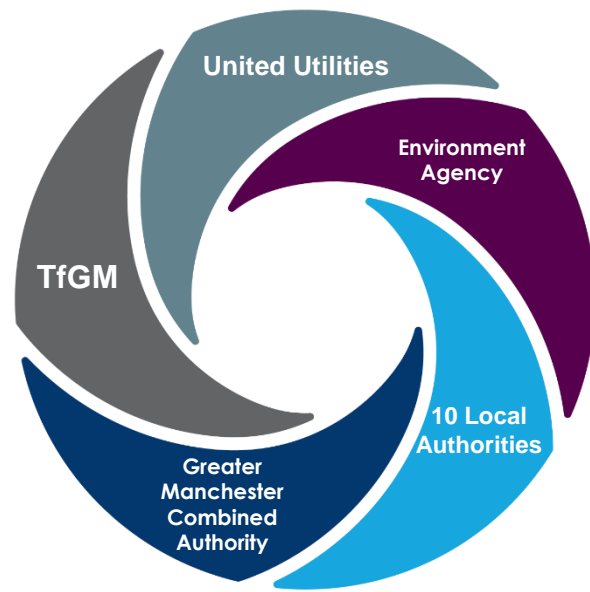
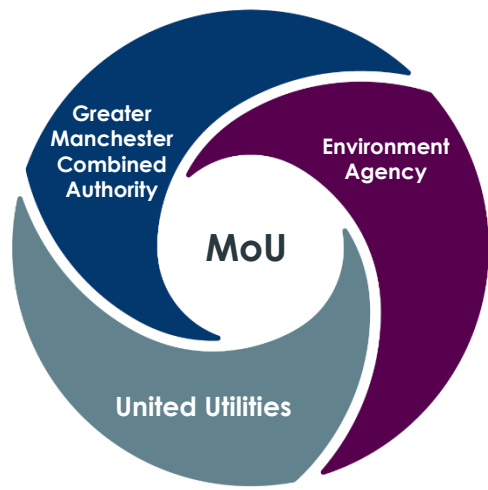
Item 9

Annual Business Plan 2025-2026

GM Green City Region Partnership 3rd April 2025



Trilateral partners; working together under a Memorandum of Understanding



Aim to work with other organisations across the GM water cycle

The main water management challenges that affect people, place and prosperity in Greater Manchester



Water shortage



R. Irwell

River Water Quality



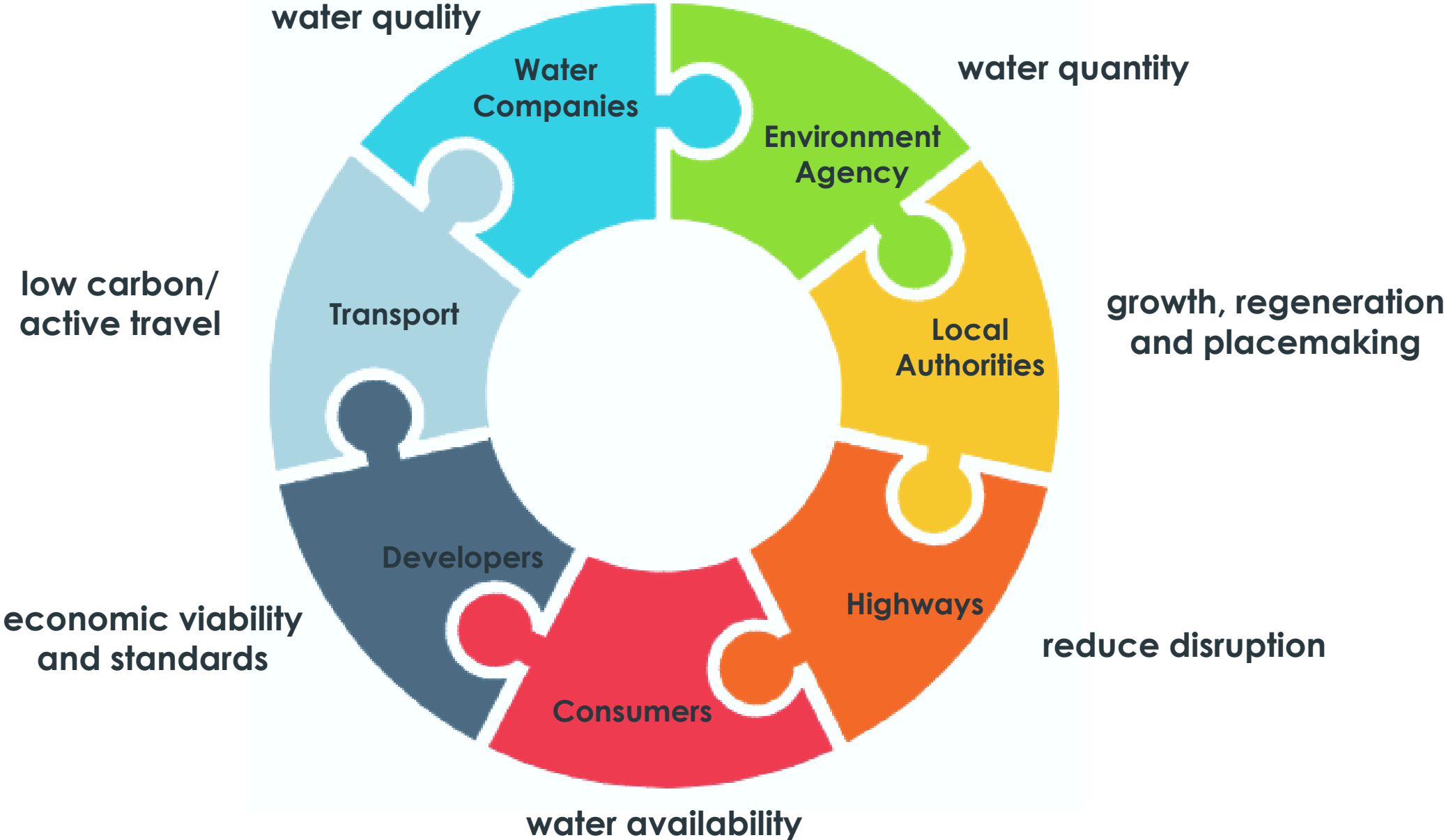
Flooding



Ecology



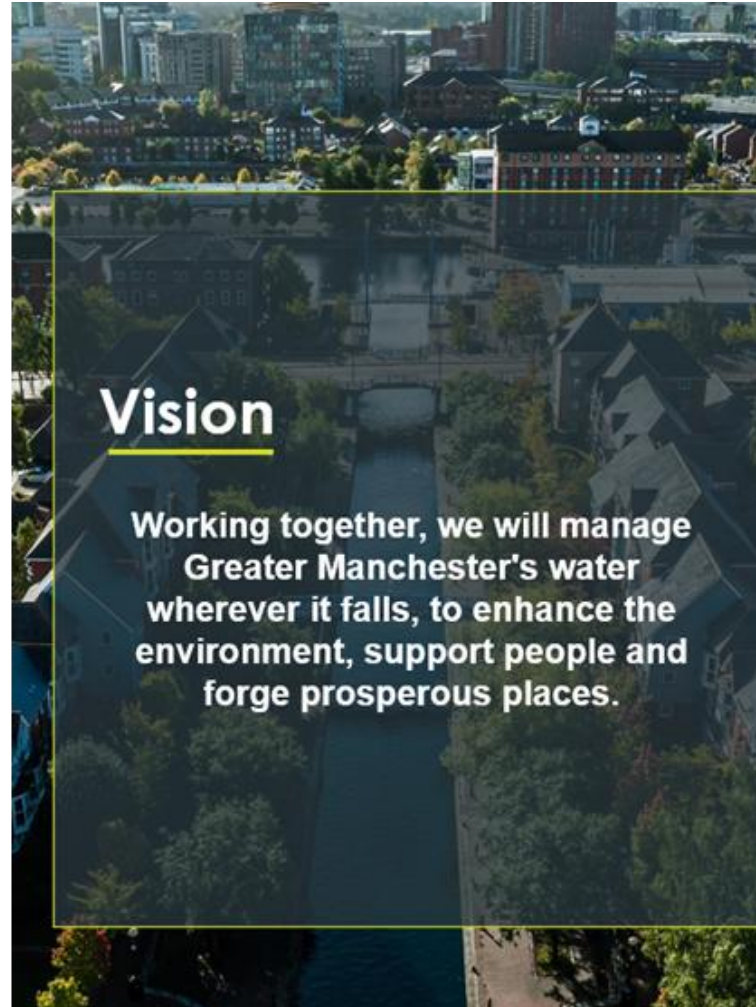
Water governance: complicated structure





Integrated Water Management Plan. Our vision.

Enhancing Life through Water



We will collaborate to **break barriers** to manage water in an integrated way to enable the delivery of sustainable growth in Greater Manchester.

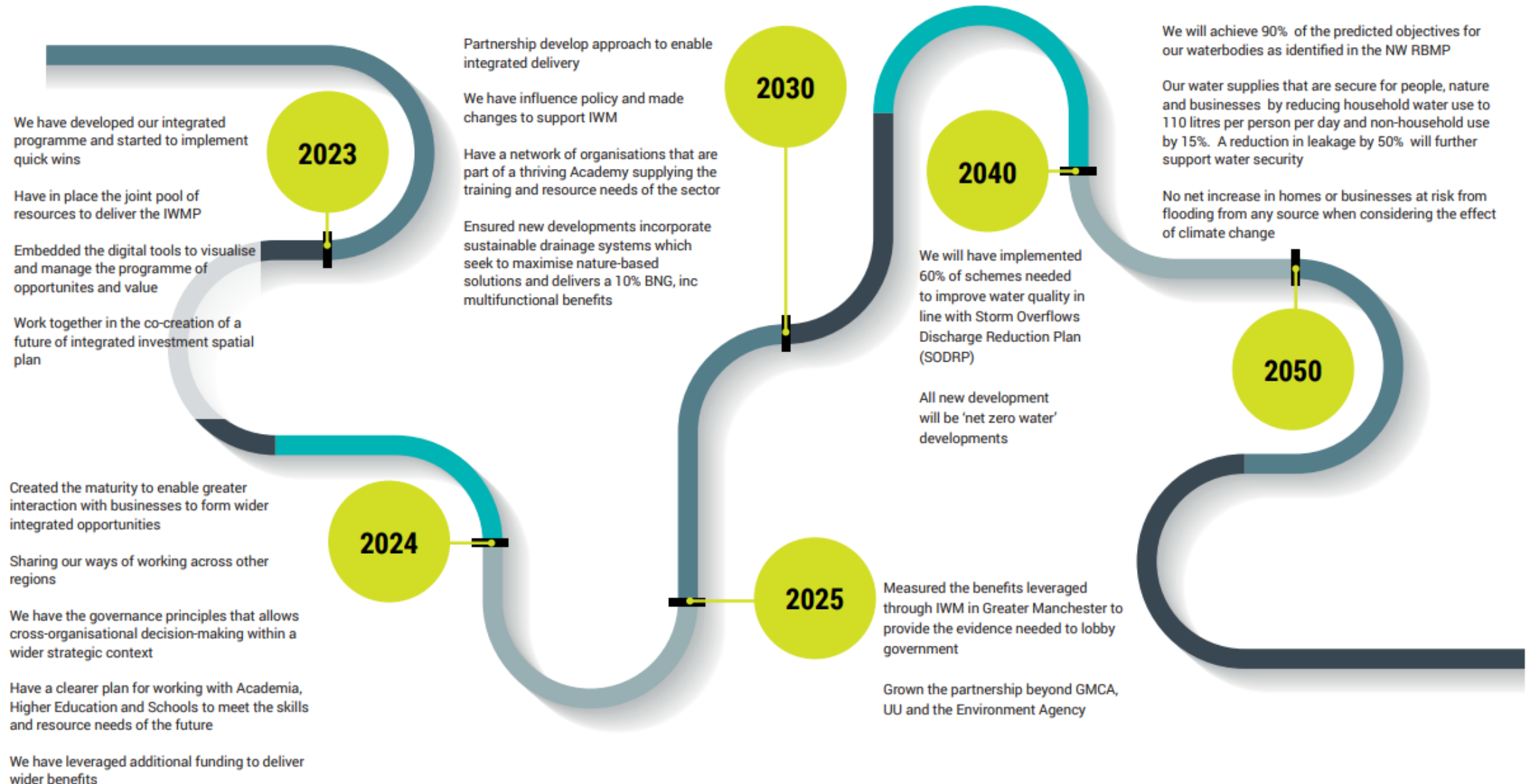
We will ensure that **all interventions consider** water neutrality, flood resilience, water quality improvement and build in climate adaptation.

We will involve **businesses and community stakeholders** to deliver resilient, diverse and inclusive public spaces.



Our journey to 2050

The timeline sets out our short-term actions to develop the delivery plan and our high-level ambitions to 2050

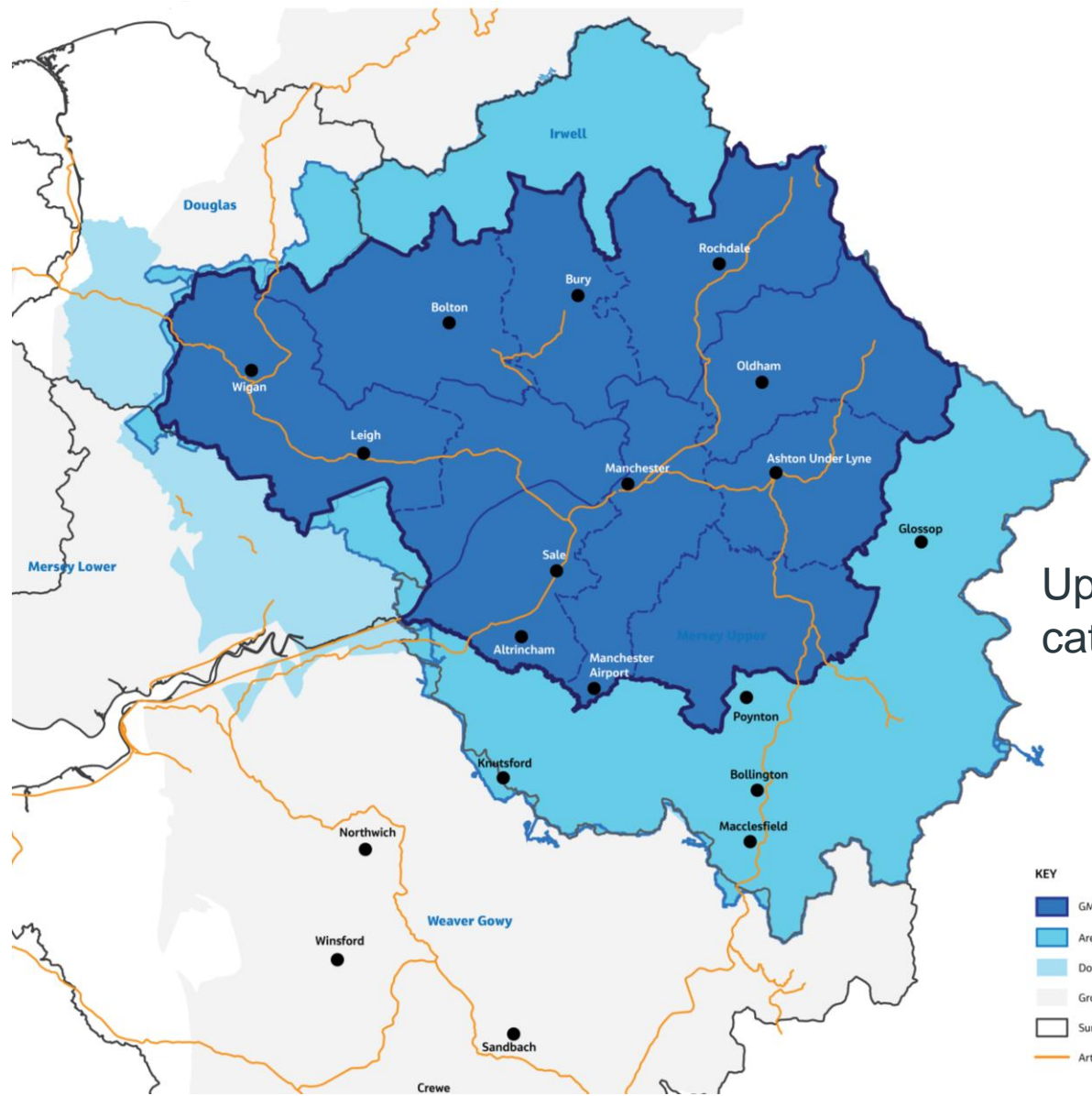




Boundary of GM's Integrated Water Management Plan

Irwell catchment

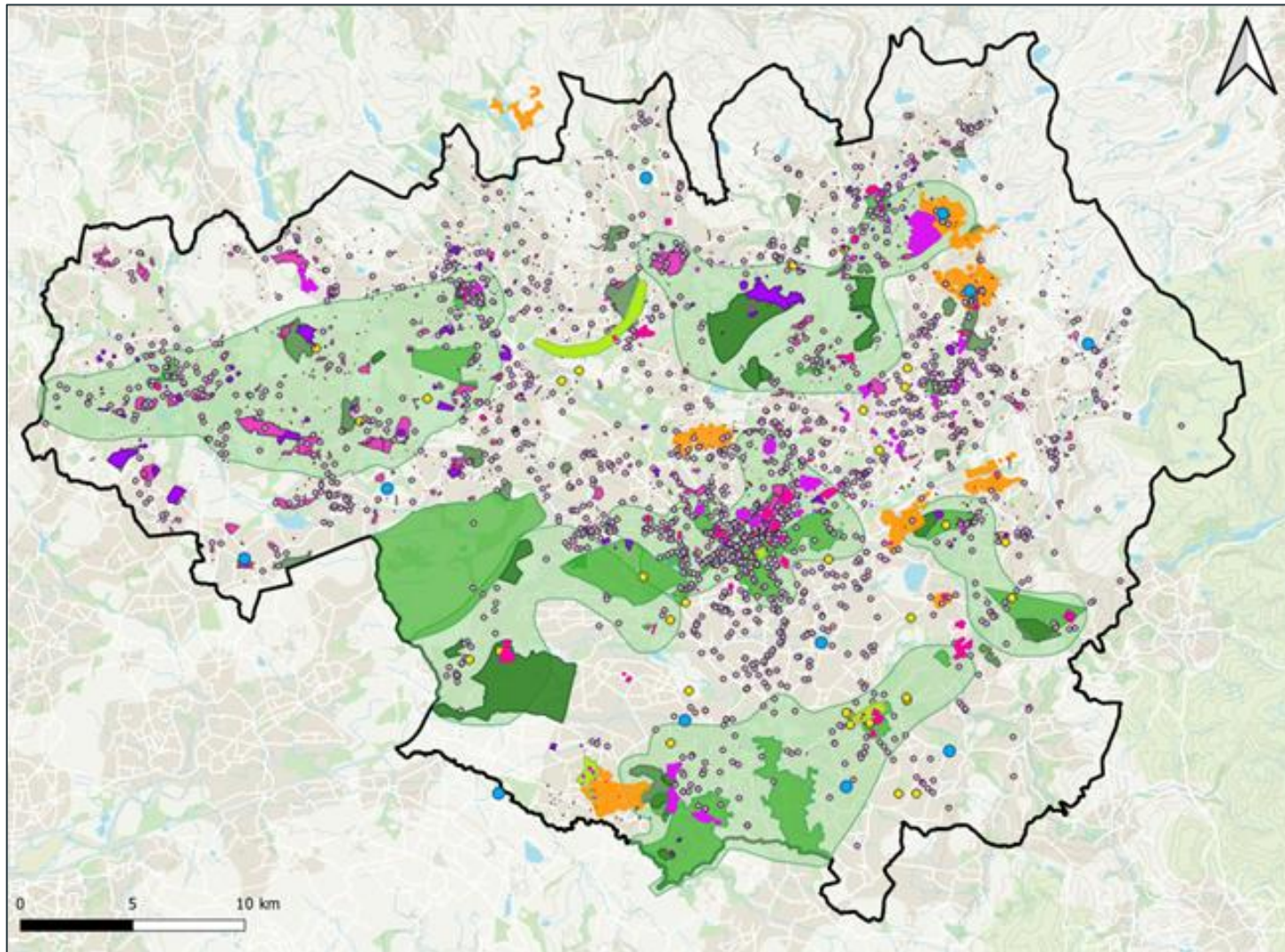
Recognising that water doesn't conform to administrative boundaries



Upper Mersey catchment



Living Integrated Opportunity Programme



The programme will join opportunities up that align spatially, driving investments and solutions that deliver better value compared to traditional solutions, leveraging funding from other sources where there is an alignment in objectives and by challenging delivery to be more efficient.

20 Programmes

60 datasets

500 clusters

32,000 data points



Focus areas

Enabling Sustainable Growth through Integrated Water Management

Create an Integrated Catchment Model for GM & trial an integrated catchment approach in the Upper Irwell

Address flood risk from all sources

Improve water quality

Supporting activity

Optimise investment in the natural environment of GM

Increase capacity to deliver retrofit SuDS schemes and incorporate SuDS into new developments

Develop relationships and deliver stakeholder engagement and communications plan



Programme Overview 2025-2026

Focus areas

Enabling Sustainable Growth through Integrated Water Management	Create an Integrated Catchment Model for GM & trial an integrated catchment approach in the Upper Irwell	Address flood risk from all sources	Improve water quality
<ul style="list-style-type: none"> • Advance the development of prioritised cluster sites for 2024-25. • Capture lessons learned to enhance future cluster development methodology. • Monitor activities within each Local Authority district to identify and track integrated working opportunities. • Collaborate with the United Utilities Rainwater Management Team to explore joint opportunities. • Develop EA delivery model to support GM growth locations. 	<ul style="list-style-type: none"> • Work with Uni of Manchester to develop a fully integrated catchment model for GM. • Continue developing the Upper Irwell Integrated Water Management Plan. • Appraise top priority projects in the Upper Irwell Investment Plan. • Apply lessons from Upper Irwell to other catchments. • Develop a second Integrated Water Management Plan for another GM catchment. 	<ul style="list-style-type: none"> • Analyse spatial data to identify priority areas for surface water projects. • Develop and progress a pipeline of priority surface water projects to the outline business case stage. • Create a funding strategy for priority surface water projects. • Engage with GM Local Authorities to validate and agree on priority sites. • Deliver the GM Flood Risk Management Programme. • Develop joint EA & UU modelling principles for surface water flood risk. 	<ul style="list-style-type: none"> • Identify opportunities to enhance delivery of the United Utilities AMP 8 investment programme. • Identify opportunities to enhance the delivery of the EA Environment Programme. • Collaborative work to support the development of the future WINEP as part of the development of PR29.



Supporting activity

Optimise investment in the natural environment of GM

- Quantify potential level of opportunity to invest river-based BNG credits in GM.
- Ensure that the BNG river credits required in GM are generated and invested within GM
- **Continue to develop the partnership with Rebalance Earth**

Increase capacity to deliver retrofit SuDS schemes and incorporate SuDS into new developments

- Deliver training and upskilling programme around the GM Sustainable Drainage Guide for Streets
- Develop additional resources to cover incorporation of SuDS into new developments and GM Growth Locations.
- **Identify opportunities for Trilateral partners and infrastructure providers to embed design guide principles.**

Develop relationships and deliver stakeholder engagement and communications plan

- Agree potential new partners that can be brought onboard.
- Update the stakeholder engagement plan and list with detailed water-related contacts, including their level of interest and influence.
- **Create a central message bank and toolkit and integrate IWMP messages into partner campaigns.**
- Establish a stakeholder mailing list and send regular updates on "water in GM", including news items, case studies, project delivery updates and calls to action.



Recommendation:

**To note and comment upon GM's Integrated Water
Annual Business Plan 2025-2026**

Enhance
Life through
Water

To find out more information on the Greater Manchester
Integrated Water Management Plan, scan the QR code

Thank you

mark.turner@greatermanchester-ca.gov.uk

