

Responsible Alcohol Consumption PSPO

Evidence Pack

December 2025

Introduction

Robust evidence is essential when considering the implementation of a PSPO. The council need to be satisfied that the evidence demonstrates that the conditions for the application of a PSPO have been met.

Following a recent enforcement review, the necessary delegated powers have now been authorised allowing, Community Safety Enforcement Officer(CSEOs) to use this legislation.

Cabinet members must consider the evidence to see if a borough wide PSPO would help support the ambition to be a responsible drinking borough.

Background

- Camden's day and night-time economy is a vibrant and dynamic scene, known for its eclectic mix of entertainment, cultural offerings, and bustling nightlife. Situated in the heart of London, Camden attracts both locals and tourists alike with its diverse range of bars, pubs, clubs, live music venues, and restaurants. The area is particularly renowned for its alternative and indie music scene, with iconic venues such as the Roundhouse and Electric Ballroom hosting live gigs by both emerging and established artists.
- Beyond its music scene, Camden's day and night-time economy also encompasses a rich tapestry of street food markets, vintage shops, and late-night shopping opportunities. Camden Market comes alive after dark, offering visitors a chance to explore an array of stalls selling everything from handmade crafts to vintage clothing.
- In recent years, Camden has also become a hub for immersive experiences and innovative entertainment concepts, with venues hosting themed events, interactive exhibitions, and pop-up installations that cater to diverse tastes and interests.
- However, Camden also faces challenges, ensuring the safety and well-being of visitors. The Local authority and businesses continually work together to strike a balance between promoting the area's day and night-time economy and addressing concerns around alcohol related anti-social behaviour and the negative impact on residential communities.
- Overall, Camden's day and night-time economy reflects the area's unique identity and cultural heritage, offering a lively and diverse array of experiences for those who live, work, or visit Camden.

Quantitative Evidence

Available intelligence has been examined to see what the potential requirement for the borough will be going forward. The evidence is not comprehensive; however, the information below seeks to provide some context as to how big the **reported** problem of alcohol related ASB is in the borough. The time periods we will look at, where possible, is the period of 2023(Year 1) 2024 (Year 2) to November 2025.

The following services data was used:

- Police
- Routes of the Street (Camden's commissioned rough sleeping outreach service)
- Community Safety

Quantitative Evidence

Camden Alcohol Related ASB Complaints:

Camden Community Safety log all complaints that come into their service. They log the type of incident and the location. Looking at the data supplied for the period identified, there were 46 cases that had an alcohol element in year 1. In comparison in year 2 there were 64 cases that had an alcohol element which equates to a 32% increase in reports made to Community Safety during 2023 period. However, during the eleven-month period of 2025, only 37 cases were recorded, which is a 42% decrease compared to Year 2. It is important to note that changes in reporting systems during this time over to contact Camden may have influenced these figures.

Police data for alcohol-related ASB shows a slight decline between 2023 and 2024, followed by a further reduction in the 11-months reviewed for 2025. In 2023, there were 504 complaints flagged for alcohol, with 12 incidents specifically related to street drinking. In 2024, this figure decreased to 490 complaints, with 18 street drinking incidents, representing a 50% increase in street drinking reports compared to the previous year. For the eleven months of 2025, there were 406 alcohol-flagged ASB complaints, which is a 17.1% decrease compared to 2024. While this suggests a downward trend, it is important to note that the data does not yet include December. Therefore, the likely projection is that incidents will rise as the year moves into the festive season.

It's important to note the proportion of cases where alcohol is a contributory factor are thought to be much higher than the figures indicate. This can be attributed to offences by type. Alcohol can be a contributing factor but isn't recorded as the primary factor of the offence committed.

Quantitative Evidence

Methodology: The analysis is based on data collected from Camden and Police ASB reports in Camden during 2023 , 2024 up to November 2025. The data includes information based solely on reports that have an alcohol flag and/or a street drinking notification.

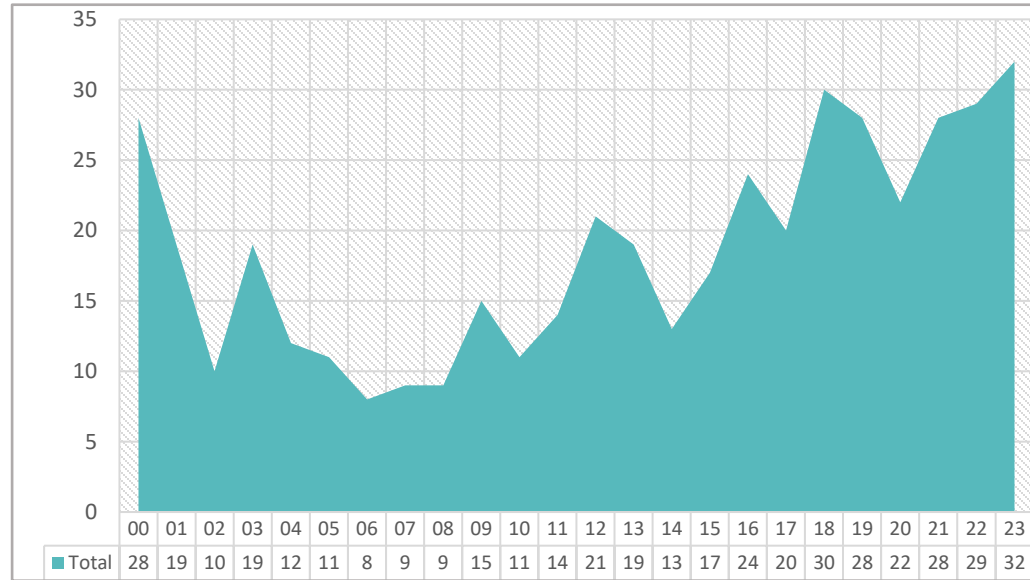
Data Source	Year 1 (2023)	Year 2 (2024)	Year 3 (Nov 2025)
ASB Complaints to Council involving alcohol	46	64	37
Police Reports Alcohol related ASB	504	490	406
Street Safe Reports Routes of the Streets	33	27	N/A

	Met ASB Call Data -	January 2025 – November 2025
	Alcohol	406

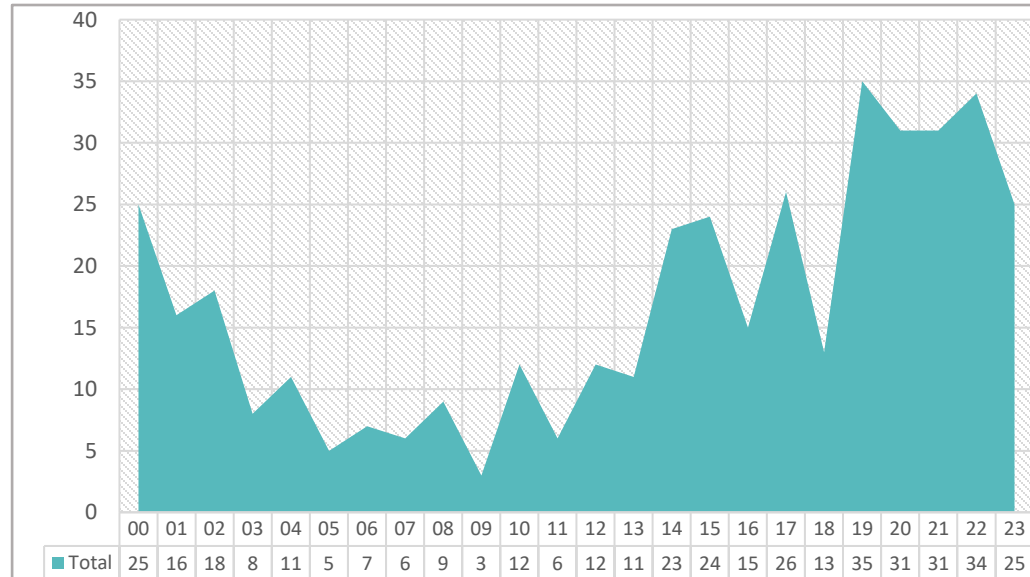
Police reports related to Alcohol

Data is only available for a period January 2025 to November 2025. In this period there were 406 complaints of ASB with an alcohol flag and 13 calls in relation to street drinking.

Quantitative Evidence



MPS Safe stat 2024 alcohol related reports By Time 24Hrs



MPS Safe stat 1st January 2025 – 30th November 2025 alcohol related reports By Time 24Hrs

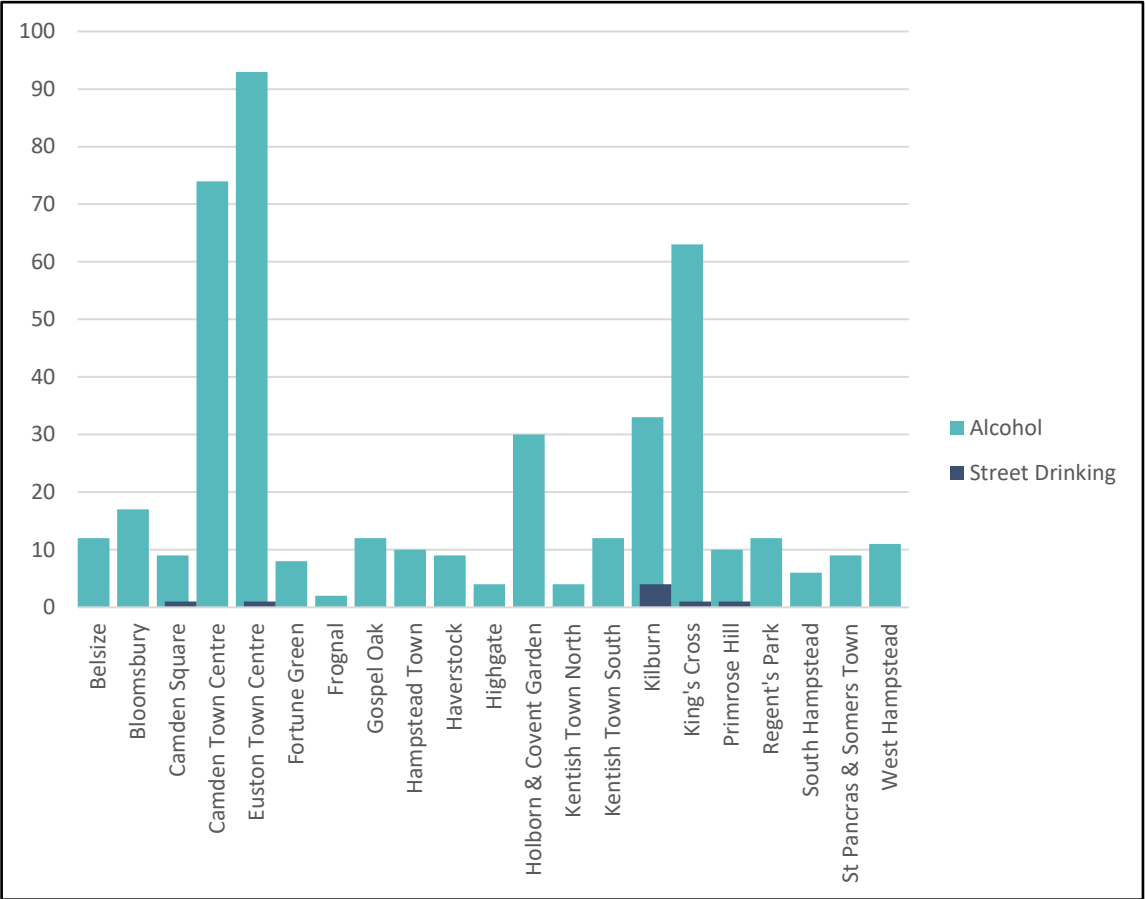
Temporal Data

Peak timeframes for alcohol-related ASB are: 18:00–21:00 (25.2%), 22:00–01:00 (17.2%), 11:00–14:00 (15.7%), and 01:00–04:00 (10.4%).

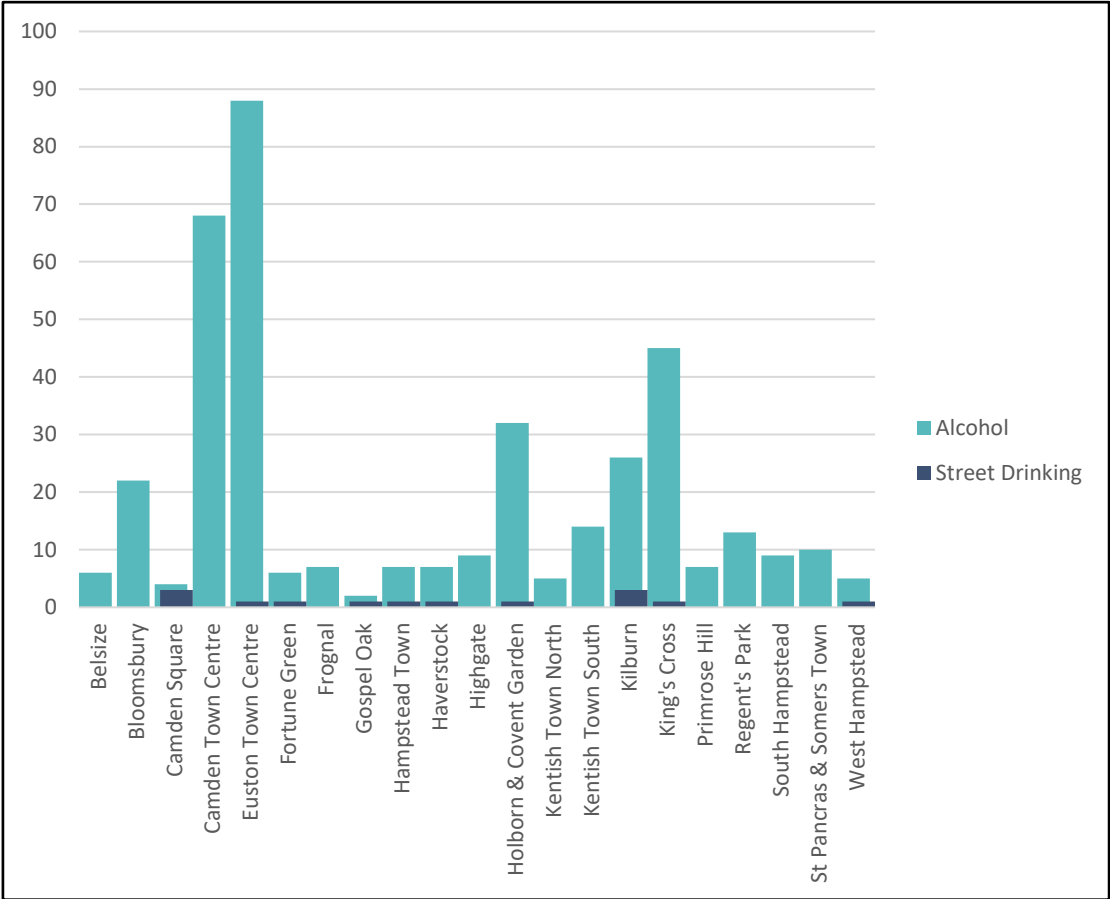
Peak days for offences were observed on Saturdays, accounting for 84 incidents (18.4%), and Fridays, with 76 incidents (16.8%). A significant majority of offences (66.9%) occurred from Monday to Friday, while 33.1% transpired over the weekend.

Overall, the data indicates a seasonal pattern, with elevated reporting during the spring and summer months (April–July) collectively accounting for 35.3% of incidents, and a secondary peak in late autumn (October–November) contributing 22.2%. These trends suggest that social and leisure activities during warmer months and the festive season drive increased alcohol-related ASB.

Quantitative Evidence



MPS Safe stats 1st January 2024- 31st December 2024 alcohol related reports By Ward



MPS Safe stats 1st January 2025- 30th November 2025 alcohol related reports By Ward

Certain areas within Camden demonstrate a higher concentration of alcohol-related incidents. These are predominantly linked to residential locations with high-density bars and pubs.

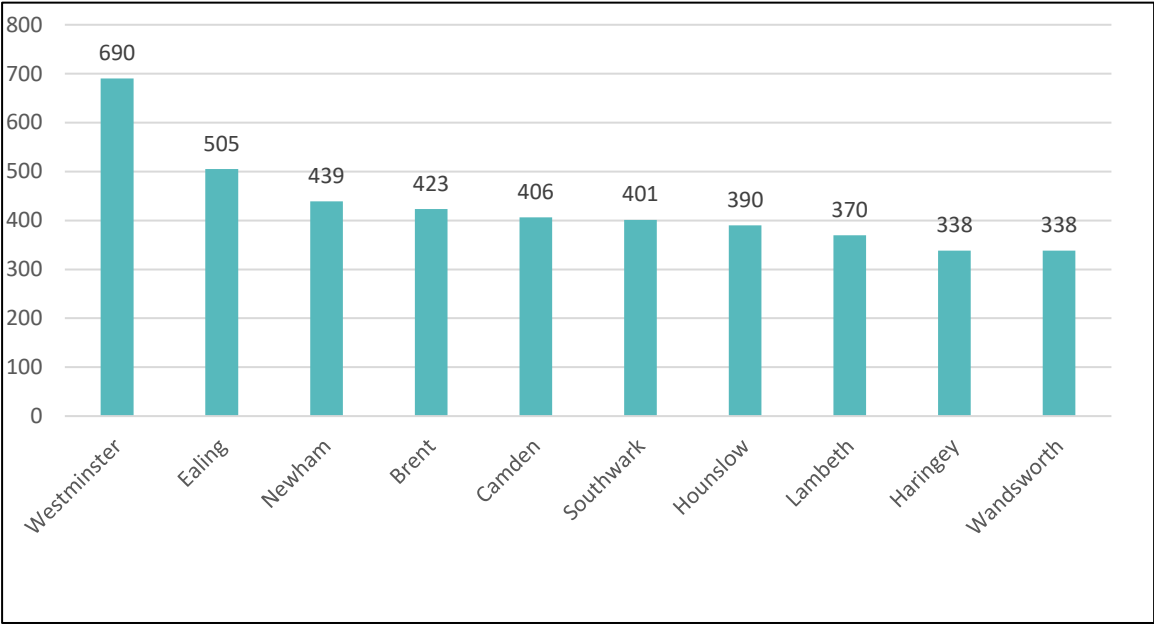
Quantitative Evidence

Ward	Alcohol ASB Reports 2024	Alcohol ASB Reports November 2025
Belsize	13	6
Bloomsbury	19	22
Camden Square	11	7
Camden Town Centre	84	68
Euston Town Centre	99	89
Fortune Green	9	7
Frognal	2	7
Gospel Oak	13	3
Hampstead Town	10	8
Haverstock	9	8
Highgate	4	9
Holborn & Covent Garden	31	33
Kentish Town North	6	5
Kentish Town South	16	14
Kilburn	41	29
King's Cross	67	46
Primrose Hill	11	7
Regent's Park	14	13
South Hampstead	9	9
St Pancras & Somers Town	10	10
West Hampstead	12	6
Grand Total 2024 - 2025	490	406

MPS Safe stats 1st January 2024 – 31st December 2024 – 1st January 2025 – 30th November 2025 alcohol related reports By Ward .

The chart highlights variations in ward-level reporting compared to incidents recorded by Camden Council. Euston Town Centre and Camden Town Centre teams play a key role in managing ASB linked to Camden's busy night-time economy. These teams operate across multiple ward boundaries, which means they handle a broader range and higher volume of alcohol-related ASB incidents. As a result, ASB reporting in these areas is significantly higher than in more localized wards. Beyond the two Town Centre teams, Kings Cross, Holborn & Covent Garden, and Kilburn consistently show the highest levels of alcohol-related ASB during 2024 and 2025. These wards also rank similarly high in Camden ASB reports, largely due to their vibrant night-time economy, which continues to drive elevated incident levels.

Quantitative Evidence- 2025



Met Safe Stats – Top 10 London Boroughs, Alcohol Reports 1st January – 30th November 2025

Camden currently ranks within the top 10 boroughs in London for alcohol-related reports, reflecting the significant prevalence of alcohol-related incidents within the borough during the first eleven months of 2025.

**Comparison within all London Boroughs:
Currently Joint 5th Position.**

London Borough	Total
Westminster	690
Ealing	505
Newham	439
Brent	423
Camden	406
Southwark	401
Hounslow	390
Lambeth	370
Haringey	351
Wandsworth	338
Tower Hamlets	315
Islington	308
Hackney	305
Croydon	297
Lewisham	296
Hillingdon	288
Greenwich	282
Harrow	279
Barnet	277
Hammersmith and Fulham	272
Waltham Forest	256
Redbridge	249
Kensington and Chelsea	242
Enfield	215
Bromley	169
Havering	158
Richmond Upon Thames	154
Merton	151
Barking and Dagenham	150
Kingston upon Thames	149
Bexley	120
Bexley	86

Met Safe Stats - All London Boroughs. Alcohol Reports 1st January – 30th November 2025

Impact on our communities:

Below are a sample of the incidents reported in the last year to illustrate the impact on our communities from irresponsible drinking currently taking place:

Kilburn Grange Park 30th June 2024

Resident reports they were confronted by members of a group in the park who are constantly disturbing other park users - they sit near the rose garden drinking and sometimes urinating there

Talacre Town Green 12th August 2025

Park could not be locked due to drinkers refusing to leave, there was then a fire damaging the children's playground caused by teenagers

Chalcot Square 5th April 2025

Contractor unable to lock park due to drunk families refusing to leave. Families reported to being rude to contractor staff

Camden Gardens 23rd May 2025

Contractor unable to lock park due to people refusing to leave. Alcohol container rubbish littered across site and damage from fire reported

Impact on our communities:

Below are a sample of the incidents reported in the last year to illustrate the impact on our communities from irresponsible drinking currently taking place:

Camden Town 19th July 2025

Group of people sitting on Bridge Street drinking, playing loud music and being rude to those passing by.

South End Green 19th August 2024

Staff note daily drinkers behaving aggressively and urinating in the bushes

Whitfield Gardens 19th August 2024

Contractor reports four drinkers exhibiting Anti-social behaviour by urinating in front of members of the public.

Kilburn High Road 3rd June 2025

People sitting outside a bank on a bench drinking and swearing at those around them

Key Findings:

1.ASB Incidents: Alcohol-related ASB incidents have been a significant concern in Camden over many years, with reports of disturbances, public intoxication, vandalism, and violence attributed to alcohol abuse.

2.Cost of Cleaning Services: The cost of cleansing services to address the aftermath of alcohol-related ASB incidents, including graffiti removal, street cleaning, and waste disposal, is considerable. Alcohol-related ASB also contributes to the overall expenditure on maintaining public spaces.

3.Property Damage: Incidents of property damage, such as broken windows, defaced buildings/parks, and littering, are often linked to alcohol-related ASB. The cost of repairing and restoring damaged property adds to the financial burden on property owners and local authorities.

4.Hospital Admissions: Alcohol-related ASB frequently results in injuries requiring medical attention, leading to hospital admissions. The associated healthcare costs, including A&E treatments, surgeries, and rehabilitation, place additional pressure on healthcare services and budgets.

Conclusion:

The prevalence of alcohol-related ASB in Camden has not only negative social and safety impacts but also significant economic consequences. The costs incurred for environmental services, property damage within the public realm, and hospital admissions underscore the need for proactive measures to address irresponsible drinking and its associated impacts on the community. By investing in prevention strategies, enforcement tools, Camden can mitigate the impact of alcohol-related ASB while promoting a safer and healthier environment for its residents.

Survey Information

In addition to the quantitative data, we felt it was important to consider the views of the public we have therefore look at perception information from the surveys conducted recently on the borough.

London Borough of Camden - Residents Survey 2023

In December 2023, Community Safety conducted a survey to determine residents' priorities regarding antisocial behaviour and safety. Respondents were people who live, work or visit Camden. The survey ran for a four-week period and was promoted via various communication channels including social media, Camden e-newsletters and essentials.

The survey is split into four sections:

- Antisocial Behaviour & Reporting
- Safety
- What is important to you?
- Demographic

Survey Information

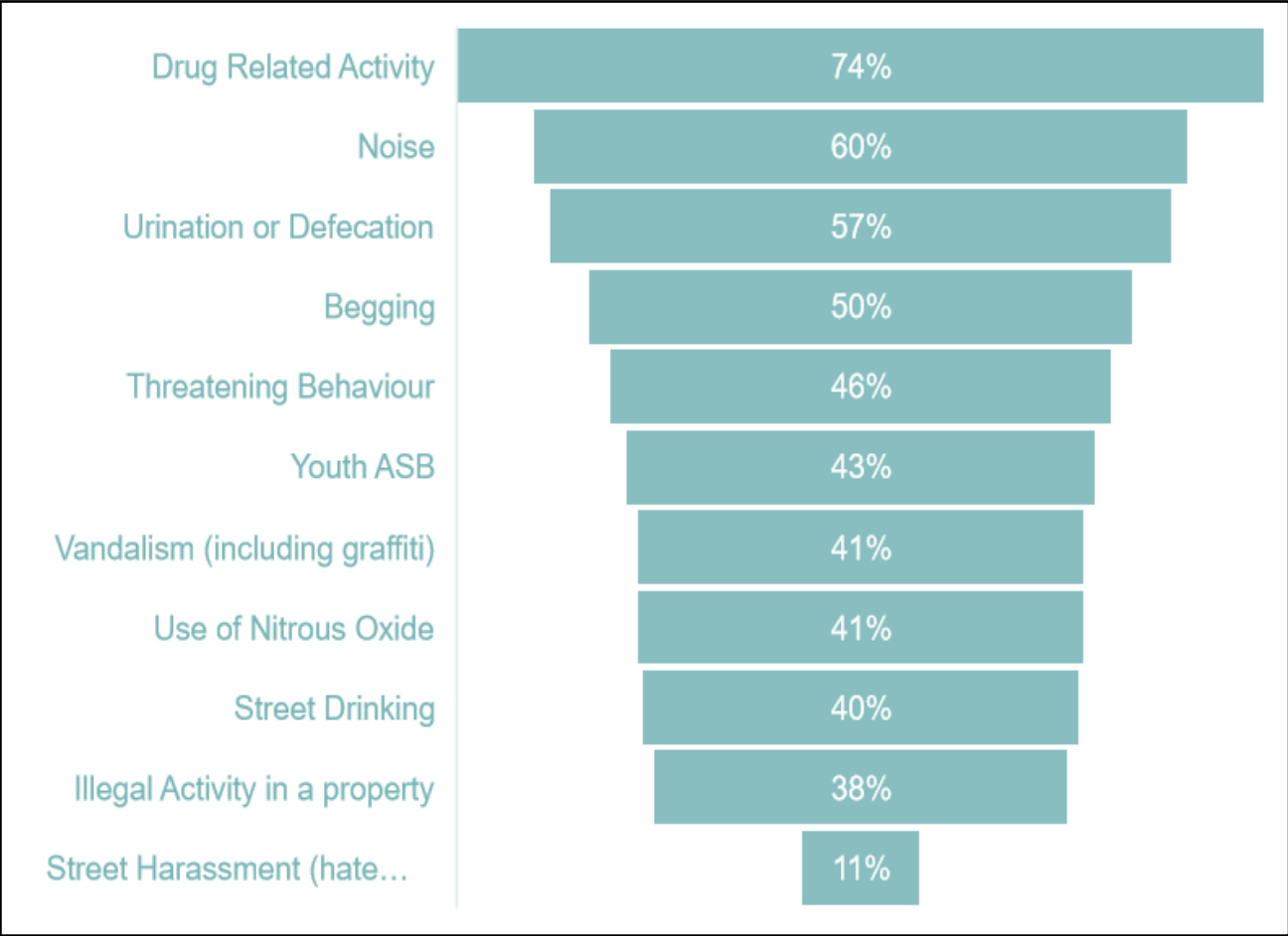


Figure 82 - What type of ASB have respondents experienced?

91% of respondents have experienced antisocial behaviour. In figure 82 it is evident that more than 50% have experienced or witnessed drug related ASB, noise, urination or defecation and begging. Street drinking also features in the Survey as a concern for residents. Street Drinking can be a contributing factor to several behaviours shown in the chart.

Survey Information

The following section delved into safety within Camden and individuals' perceptions of their safety.

We asked respondents if they agreed or disagreed with the following statement “I feel safe in Camden,” this was for during the daytime and night-time.

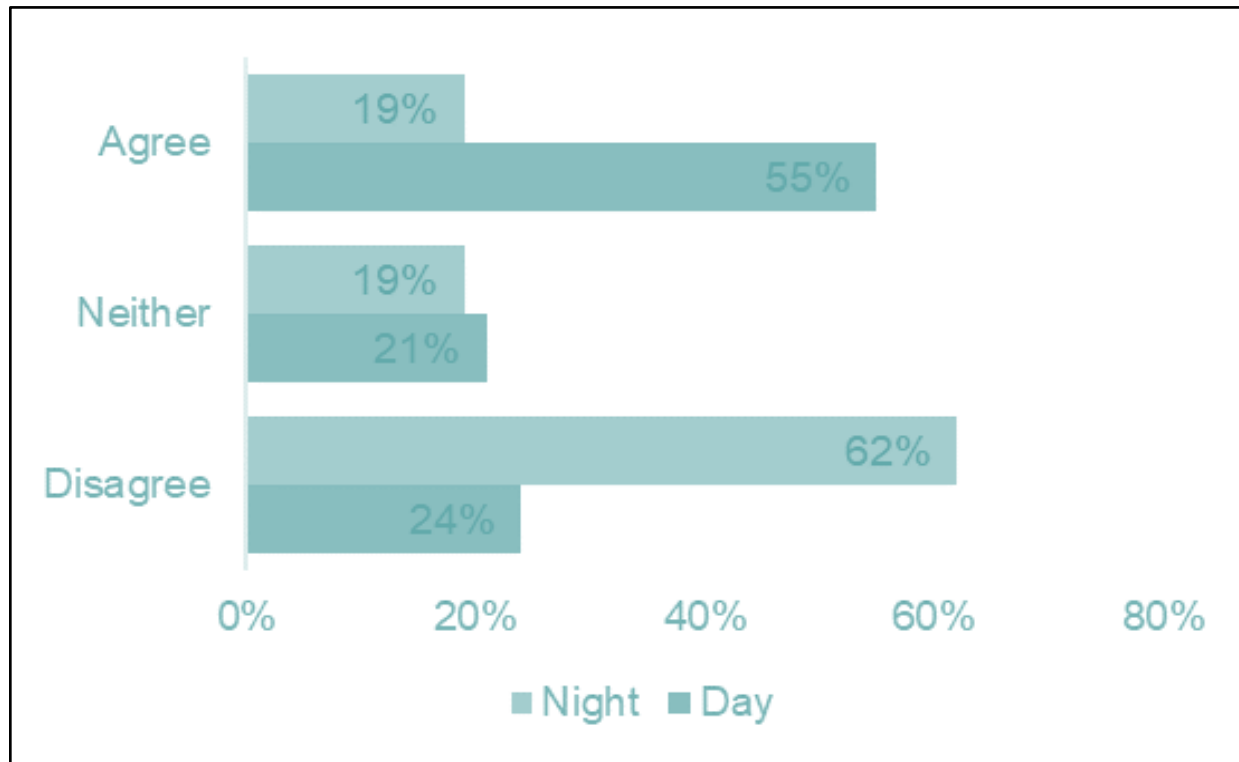


Figure 83 - Do you feel safe in the daytime and do not feel safe at night in Camden.

Figure 83 tells us that majority of respondents feel safe in the daytime and do not feel safe at night in Camden.

Survey Information

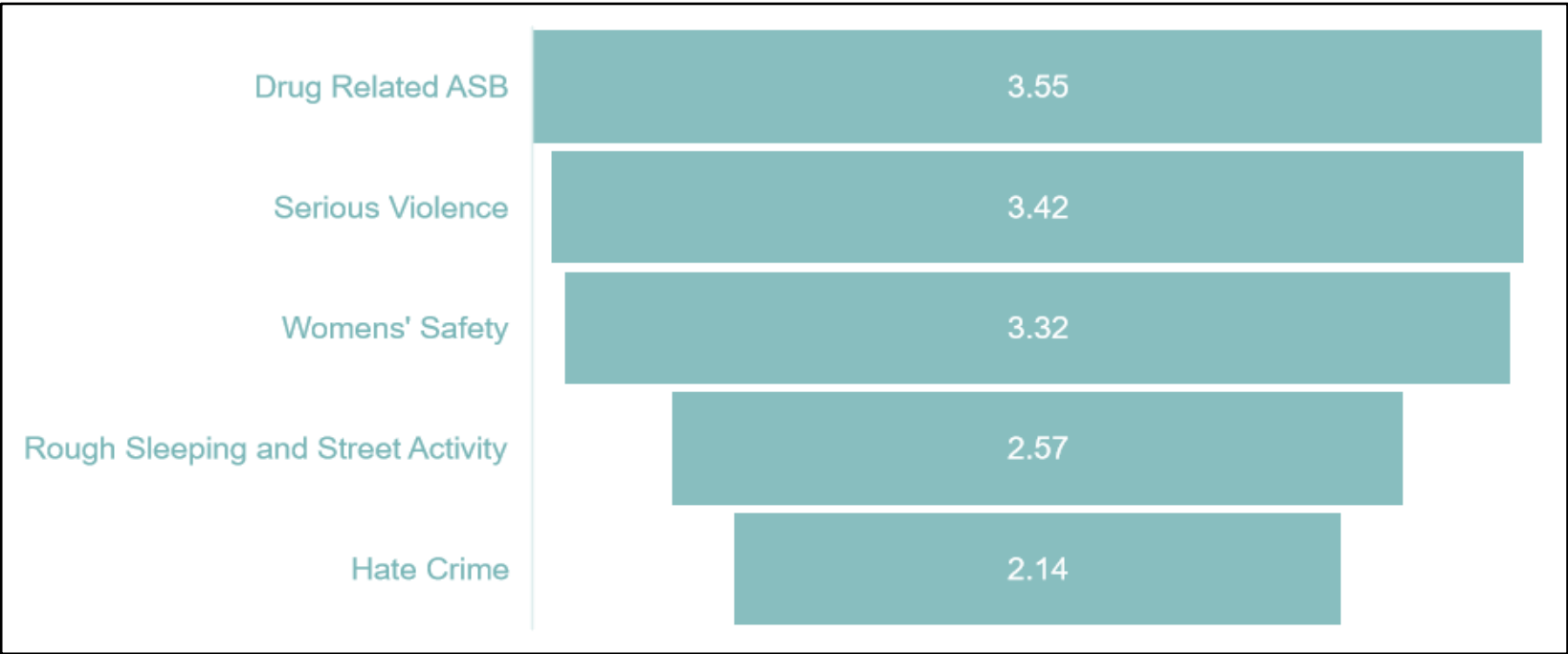
In the final section, we wanted to find out what was important to respondents and their priorities.



Firstly, we gave a list of our strategic priorities for 2023/24 and asked respondents to rank them in order of most importance from 1-5.



Figure 84 indicates that drug-related ASB is the leading concern for respondents, aligning with Figure 82 where drug-related ASB emerged as the most common type. Following closely, serious violence was identified as a primary concern by 32% of respondents, while 19% expressed women's safety as their top priority.

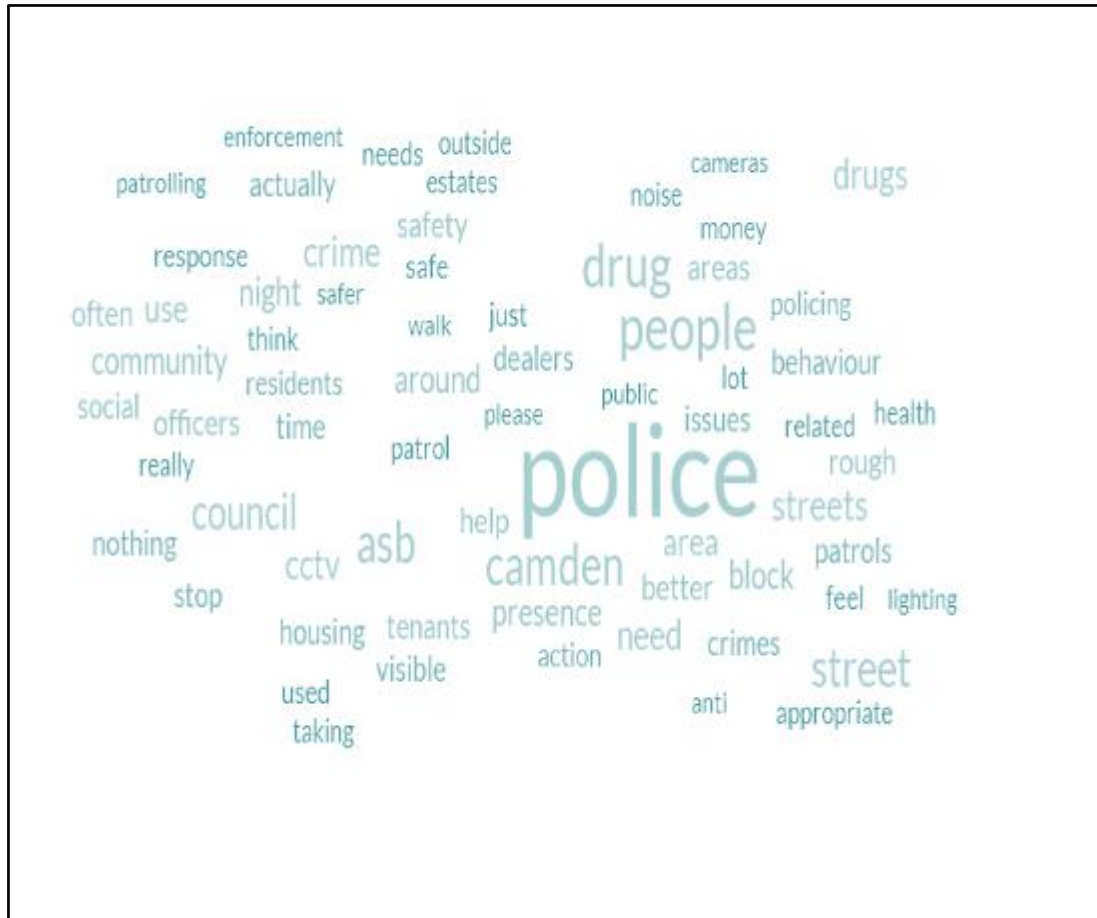


This chart outcomes the current priorities for the Community safety partnership board and are not inclusive of other priorities areas in the borough.

Figure 84- What are respondents' priorities?

Survey Information

To finish the survey, we asked for some general responses on anything respondents felt we could improve on the way we deal with ASB in the borough.



The word cloud shows a general overview of what was within responses but from further analysis recommendations were:

Tougher policies around drugs/reviewing policies.

Better action from council – prioritising victims more.

More police presence – or the equivalent
(officers who can take a level of action)